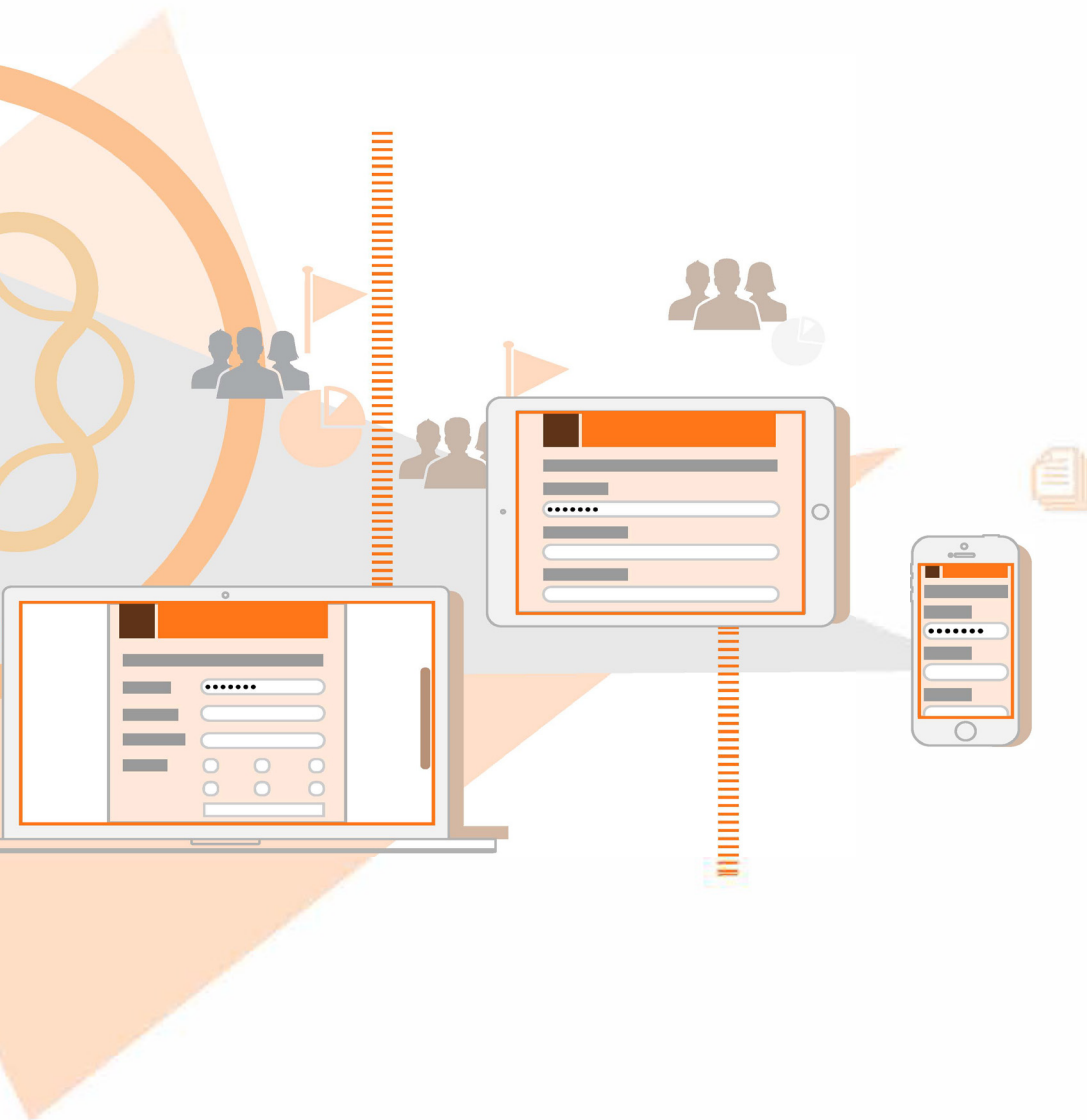


---

# Upgrading from LiveCycle ES3 to Adobe Experience Manager forms on JEE for JBoss Turnkey

---



**AEM 6.4 Forms**

## **Legal notices**

For legal notices, see [http://help.adobe.com/en\\_US/legalnotices/index.html](http://help.adobe.com/en_US/legalnotices/index.html).

---

# Contents

<b>Chapter: 1</b>	<b>About This Document . . . . .</b>	<b>1</b>
	What this document contains . . . . .	1
	Who should read this document? . . . . .	1
	Conventions used in this document . . . . .	1
<b>Chapter: 2</b>	<b>Upgrading to AEM Forms (Turnkey) . . . . .</b>	<b>2</b>
	How the AEM Forms on JEE upgrade works . . . . .	2
	Detailed outline of tasks performed in the turnkey upgrade process	2
<b>Chapter: 3</b>	<b>System Prerequisites . . . . .</b>	<b>4</b>
	System requirements . . . . .	4
	Additional prerequisites . . . . .	4
	Hardware . . . . .	4
	Operating system . . . . .	4
	Partial turnkey database pre-configuration . . . . .	4
	Application server . . . . .	5
	Backing up data files . . . . .	5
	Before you start . . . . .	6
	General considerations . . . . .	6
	Disable the Windows UAC . . . . .	7
	Additional Requirements . . . . .	7
	Acrobat Reader DC extensions credential . . . . .	7
	Pre-configurations for PDF Generator . . . . .	7
<b>Chapter: 4</b>	<b>Upgrading to, Configuring, and Deploying AEM Forms on JEE . . . . .</b>	<b>10</b>
	Installing AEM Forms on JEE . . . . .	10
	Installing AEM Forms on JEE . . . . .	10
	Install service packs . . . . .	12
	Import database content and move backed-up data . . . . .	12
	Configuring AEM Forms on JEE . . . . .	12
	Configuring AEM Forms on JEE . . . . .	12

---

Selecting modules . . . . .	.13
Selecting Tasks . . . . .	.13
Reviewing the requirements . . . . .	.13
Configuring EAR, Fonts, and GDS . . . . .	.13
Configuring Acrobat for PDF Generator . . . . .	.14
Configuring the Database . . . . .	.15
Configure CRX . . . . .	.15
Configuring turnkey JBoss SSL . . . . .	.15
Install verification samples . . . . .	.16
Deploying AEM Forms EARs . . . . .	.16
AEM Forms Database Initialization . . . . .	.16
Server Information . . . . .	.16
. . . . .	.17
. . . . .	.17
Session ID Migration Errors . . . . .	.17
. . . . .	.17
AEM Forms Components Deployment . . . . .	.17
Configuring AEM Forms Components . . . . .	.17
Configure Connector for EMC Documentum . . . . .	.17
Configure Connector for IBM Content Manager . . . . .	.18
Configure Connector for IBM FileNet . . . . .	.18
Configure Connector for Microsoft SharePoint . . . . .	.18
Verifying Configuration for ECM Connectors . . . . .	.18
Manually Configuring Connectors . . . . .	.19
Configuring PDF Generator . . . . .	.19
Configuring Acrobat Reader DC extensions Credential . . . . .	.19
Restarting Server . . . . .	.20
Task summary . . . . .	.20
Next steps . . . . .	.20
<b>Chapter: 5</b>	
<b>Import CRX repository content . . . . .</b>	<b>.21</b>
<b>Chapter: 6</b>	
<b>Post-Deployment Activities . . . . .</b>	<b>.22</b>
General tasks . . . . .	.22
Turn off maintenance mode . . . . .	.22
Enable CRXDE Lite in AEM . . . . .	.22
Change the default password of AEM Administrators . . . . .	.22
Restarting the JBoss services . . . . .	.23
Configure the serialization agent . . . . .	.23
Setting the correct date, time, and time zone . . . . .	.24
Manually enabling SSL for JBoss . . . . .	.24
Upgrading to Workbench . . . . .	.24
Accessing administration console . . . . .	.24
(Partial Turnkey only) Encrypting the plain-text password . . . . .	.25
Configure Author and Publish instance . . . . .	.25

---

	Configure the Author instance . . . . .	25
	Configure the Publish instance . . . . .	25
	Communicating between the Author and Publish instances . . . . .	26
	Configure IPv6 implementation . . . . .	27
	Install Japanese fonts for Adobe Reader . . . . .	27
	Migrate Correspondence Management assets . . . . .	27
	Boot delegate RSA and BouncyCastle libraries . . . . .	28
	Configure fonts manager service . . . . .	28
	Performing a system image backup . . . . .	28
	Additional Post Deployment Configurations . . . . .	29
	Managing the MySQL database . . . . .	29
	Configuring AEM Forms on JEE to access LDAP . . . . .	29
	Configuring the HTML digital signature feature . . . . .	30
	Configuring PDF Generator . . . . .	30
	Setting environment variables . . . . .	30
	Configuring the application server to use an HTTP proxy server . . . . .	31
	Setting the Adobe PDF Printer as the default printer . . . . .	31
	Configuring Acrobat . . . . .	31
	Installing East Asian characters in Windows Server . . . . .	32
	PDF Generator watched folder performance parameters . . . . .	33
	User accounts for multi-threaded file conversions . . . . .	33
	Adding fonts to PDF Generator . . . . .	33
	Configuring HTML to PDF conversions . . . . .	34
	Installing the PDF Generator Network Printer client . . . . .	35
	Enable PDF Conversion for Microsoft Word document containing protected fields . . . . .	37
	Configuring Connector for EMC Documentum . . . . .	37
	Configure Connector for EMC Documentum . . . . .	37
	Configuring the Connector for IBM Content Manager . . . . .	40
	Configure Connector for IBM Content Manager . . . . .	40
	Connect using Use Credentials from process context login mode . . . . .	42
	Configuring Kerberos authentication support for AEM Forms on JEE Connector for Microsoft SharePoint . . . . .	44
	Configuring the Connector for IBM FileNet . . . . .	45
<b>Chapter: 7</b>	<b>Advanced Configuration Activities . . . . .</b>	<b>48</b>
	Enabling Federal Information Processing Standard (FIPS) . . . . .	48
	Enabling AES-256 encryption . . . . .	48
<b>Chapter: 8</b>	<b>Appendix - Install using the Command Line Interface . . . . .</b>	<b>49</b>
	Overview . . . . .	49
	Install AEM Forms on JEE . . . . .	49
	Error logs . . . . .	50
<b>Chapter: 9</b>	<b>Appendix - Configuration Manager Command Line Interface . . . . .</b>	<b>51</b>

---

---

Order of operations . . . . .	.51
Command Line Interface property file . . . . .	.52
Upgrading AEM Forms on JEE Commands . . . . .	.52
(Turnkey and Partial Turnkey only) Migrate AEM Forms on JEE GDS 53	
Update AEM Forms on JEE core settings command . . . . .	.53
Post-deployment Configuration command . . . . .	.53
AEM forms on JEE Host and Authorization information . . . . .	.54
AEM forms on JEE Database information . . . . .	.55
General configuration properties . . . . .	.55
Common properties . . . . .	.55
Configure AEM Forms on JEE properties . . . . .	.57
Configure or validate application server properties . . . . .	.58
Initialize AEM Forms on JEE properties . . . . .	.59
Deploy AEM Forms on JEE Components properties . . . . .	.59
Add administrator user for PDF Generator . . . . .	.59
Configure Connector for IBM Content Manager . . . . .	.60
Configure Connector for IBM FileNet . . . . .	.61
Configure Connector for EMC Documentum . . . . .	.64
Configure Connector for Microsoft SharePoint . . . . .	.65
Command Line Interface Usage . . . . .	.66
Configure CRX CLI Usage . . . . .	.66
Initialize AEM Forms on JEE CLI Usage . . . . .	.66
Validate AEM Forms on JEE Server CLI Usage . . . . .	.66
Deploy AEM Forms on JEE Components CLI Usage . . . . .	.67
Validate AEM Forms on JEE Component Deployment CLI Usage . . . . .	.67
Check system readiness for PDF Generator . . . . .	.67
Adding administrator user for PDF Generator . . . . .	.67
Configure Connector for IBM Content Manager . . . . .	.67
Configure Connector for IBM FileNet . . . . .	.67
Configure Connector for EMC Documentum . . . . .	.68
Configure Connector for Microsoft SharePoint . . . . .	.68
Examples Usage . . . . .	.68
Configuration Manager CLI Logs . . . . .	.69
Next steps . . . . .	.69

**Chapter: 10**

**Appendix - Configuring the Connector for Microsoft SharePoint on the SharePoint Server 70**

Installation and configuration . . . . .	.70
System requirements for the SharePoint server . . . . .	.70
Installation considerations . . . . .	.70
Installation and configuration on the SharePoint server . . . . .	.70
Edit Environment Variables . . . . .	.71
Extract the web part installer . . . . .	.71
Install and Activate the Connector . . . . .	.71
Enable/Disable features . . . . .	.71
Uninstalling Connector for Microsoft SharePoint Server . . . . .	.74

---

Index . . . . .	i
-----------------	---

# 1. About This Document

## 1.1. What this document contains

This document explains how to upgrade to AEM 6.4 Forms on JEE using the turnkey method. The turnkey method automatically installs, configures, and upgrades the product and is the recommended installation option for rapid evaluation, development, and small production deployments.

Perform this type of upgrade to get the AEM Forms on JEE system up and running rapidly for a small-scale production, demonstration, evaluation, development, or training purposes. The turnkey method installs and configures a default set of Adobe and third-party products that provide a functioning AEM Forms on JEE environment.

## 1.2. Who should read this document?

This document is intended for users who are upgrading to AEM Forms on JEE using turnkey deployment.

## 1.3. Conventions used in this document

This document uses the following naming conventions for common file paths.

Name	Default value	Description
<i>[aem-forms root]</i>	C:\Adobe\Adobe_Experience_Manager_Forms	The installation directory that is used for all AEM Forms modules. This directory contains subdirectories for Configuration Manager, SDK, and CRX repository.
<i>[JBoss root]</i>	C:\Adobe\Adobe_Experience_Manager_Forms\jboss	The home directory of the application server that runs AEM Forms on JEE.
[Adobe_JAVA_HOME]	C:\Adobe\Adobe_Experience_Manager_Forms\Java\jdk1.8.0_74	The home directory of the Java JDK installed by the AEM Forms on JEE turnkey install.



## 2. Upgrading to AEM Forms (Turnkey)

You can upgrade using the turnkey method only if you installed the previous version using the turnkey method. Configuration Manager automatically performs most of the tasks required to upgrade a turnkey deployment.

### 2.1. How the AEM Forms on JEE upgrade works

Upgrading to AEM Forms on JEE involves the following major tasks, many of which are automated when you use the turnkey method of installation and deployment:

- 1) Manually backing up the existing data
- 2) Installing AEM Forms on JEE product files including new versions of the application server and database
- 3) Configuring and deploying AEM Forms on JEE
- 4) Updating (patching) the services components that are a part of AEM Forms on JEE
- 5) Manually upgrading the existing CRX repository
- 6) Performing post-deployment configurations

The installation program and Configuration Manager together perform most of the tasks. You are prompted for input throughout the process, as described by the steps in this document.

#### Detailed outline of tasks performed in the turnkey upgrade process

The turnkey installation and upgrade process has the following tasks:

- Install the AEM Forms on JEE product files.
- Install a pre-configured JBoss application server (with Apache Tomcat servlet container embedded).
- Install a pre-configured version of MySQL database server.
- Start the Configuration Manager.
- Copy contents of Global Document Storage (GDS) from your previous instance to AEM 6.4 Forms on JEE server.  
**NOTE:** If you changed the GDS location in the previous version of AEM Forms on JEE, you need to ensure that your AEM Forms on JEE GDS location should be the same. If not the same, you must copy the contents of your previous GDS location manually to the AEM Forms on JEE GDS location.
- Configure and assemble the AEM Forms on JEE EAR files.
- Configure a new CRX repository. If you already have a CRX repository from the previous version, then you will have to upgrade the repository manually later.
- Start the JBoss for Adobe Experience Manager Forms service.
- Deploy AEM Forms on JEE EAR Files to JBoss.

- Export and import database content from LiveCycle to AEM 6.4 Forms.
- Deploy all the required components to JBoss.
- Configure modules such as ECM Connectors (for example Connector for EMC Documentum, Connector for IBM FileNet, Connector for IBM Content Manager, or Connector for Microsoft Share-Point), PDF Generator, and Acrobat Reader DC extensions.

## 3. System Prerequisites

### 3.1. System requirements

Use the turnkey installation to install all the modules on a single system for development and evaluation. Ensure that your target computer has at least 8-GB RAM. For detailed system requirements, see the [Supported Platform Combinations](#).

### 3.2. Additional prerequisites

#### Hardware

For any installation, these settings are recommended as the minimum:

- Disk space for installation: 35 GB (an additional 5 GB is required if you are using an ESD download as opposed to installing from a DVD)
- System temporary space during installation: 25 GB
- Memory for running AEM Forms on JEE: 8 GB
- Processor: Intel® Xeon® E5-2680, 2.4 GHz or higher

#### Operating system

The turnkey method is supported on Microsoft Windows 2016 running on 64-bit architectures.

**NOTE:** Windows 10 is supported for evaluation and development. You must have administrator privileges on Windows to run the installer. If you run the installer using an account that does not have these privileges, you will be prompted for the credentials of an account with administrator privileges.

#### Partial turnkey database pre-configuration

The Partial Turnkey option allows you to use your existing database with the pre-configured JBoss application server. The following database types are supported:

- MySQL 5.7
- Microsoft SQL Server 2016
- Oracle 12c

If you are using your existing database, configure the database as specified in the Partial Turnkey chapter.

## Application server

The turnkey method allows you to install, configure, and use JBoss 7.0.6.

### 3.3. Backing up data files

Before starting the upgrade process, you must back up all the files and directories associated with the previous deployment, including the Java SDK, installation files, watched folder contents, temporary directory, and so on. Do not delete any of these items. The backup is required to roll-back the system to the original state, if required. The backup tasks involved are as follows:

- Put the Forms server in maintenance mode before performing upgrade (See the Running existing server in maintenance mode section in [administration help](#)). Shutdown the Forms server and take a cold backup.
- Stop the Forms server. Wait until all long-lived processes have stopped (or stop them manually, if necessary), and then proceed to perform a cold backup.

The following data must be included in your backup:

- **GDS directory:** This directory can reside either locally or on a shared network drive. Default location of the GDS directory is [install\_root]\jboss\standalone\svcd\data\gds. For information on how to find the GDS directory, see Global Document Storage directory in [administration help](#).
- **Database:** Refer your database documentation for information about creating a backup.
- **EAR files:** If you have any custom EAR files in your previous installation, backup such EAR files. You also require these files to restore your system if you encounter upgrade issues.
- **crx-repository:** Back up the CRX repository. Before you take a backup of the crx-repository, create a folder named install in the crx-repository folder.
- (Upgrade from 6.3 only) **Data Store:** If AEM 6.3 Forms is using TarMK persistence, a data store is created. For example, the turnkey installations have a datastore at C:\Adobe\_Upgrade\Adobe\_Experience\_Manager\_Forms\jboss\bin\crx-quickstart\. Take a backup of the data store also.
- **Reader Extension credential file:** Back up the Reader Extension credential file.
- **fonts:** Back up all Adobe font directories that are specified in the Configuration Manager (in the Administration Console, go to Settings > Core System > Configurations). Ensure that you back up the entire directory.
- **Customer-installed fonts:** If you installed additional fonts on your previous Forms environment, back them up separately.
- **Watched folders:** Back up the watched folders.
- **Back up correspondence management and forms assets:** Before you back up correspondence management and forms assets, decide the CRX Repository type to use for AEM Forms:  
*LiveCycle uses TarPM persistence to store content. AEM 6.4 uses Apache JackRabbit Oak-based repository. The Oak-based repository offers three persistence formats: TarMK, MongoMK, and RDBMK. For a single-server environment, TarMK is the preferred persistence format. MongoMK or RDBMK are required for clustered environments. For more information, see [Choosing a persistence type for an AEM Forms installation](#).*

*You can perform the manual steps listed below to export Correspondence Management assets:*

- i) Log in to LiveCycle ES3 server as an administrator.
- ii) Download and run the pre-migration utility on the LiveCycle server. For details, see <https://helpx.adobe.com/experience-manager/6-2/forms/using/migration-utility.html>.
- iii) Go to the URL [http://\[LiveCycle ES3 Server\]:\[port\]/lc/cm](http://[LiveCycle ES3 Server]:[port]/lc/cm) and login as an administrator.
- iv) Open the Manage Assets user interface. In the Admin tab, select Batch Operations.
- v) In Export All Assets box, click Start Process. The status changes to In Process. Wait for the status to change to Success. When the status of the process changes to Success, click Download.
- vi) The Export Assets pane prompts to select a location to download the package. Click OK. Select a folder to save the .zip file containing your assets and then click Save.

## 3.4. Before you start

### General considerations

Before you install, read through the following information to ensure that your installation runs smoothly:

- LiveCycle to AEM 6.4 Forms on JEE is an out-of-the-place upgrade. It involves installing, configuring, and deploying AEM Forms on JEE on a fresh operating system, application server, and database. For the list of supported hardware and software, see [Supported Platforms for AEM Forms on JEE](#).
- To reduce the time of installation, install AEM Forms on JEE either by using a local copy of the installation files or directly from the DVD. The installation could fail when AEM Forms on JEE is installed from a network.
- Ensure that the installation media that you received is not damaged. If you copy the installer media to the hard disk of your computer, ensure that you copy the entire DVD contents to the hard disk.
- If you downloaded the installer file set, verify its integrity using an MD5 check sum utility. Use this utility to check the MD5 check sum values with the value displayed on the [Adobe Licensing Website](#). You can use a tool such as WinMD5.
- To avoid installation errors, do not copy the DVD install image to a directory path that exceeds the maximum path length limitation. Typically, long network paths cause this error.
- You may choose to disable any on-access virus scanning software for the duration of the installation, to improve the speed of installation on Windows.
- The turnkey installation creates the following Windows services, which, by default, are set to run automatically on startup:
  - JBoss for Adobe Experience Manager 6.4 Forms
  - MySQL for Adobe Experience Manager 6.4 Forms (not applicable if you selected the Partial turnkey option)

*These services manage the application server and the database for the turnkey upgrade.*

- By default, the turnkey installation places AEM Forms on JEE components in the `C:\Adobe\Adobe_Experience_Manager_Forms\directory`.  
**IMPORTANT:** If you choose another directory, do not use the name **test** as your directory name (for example, `C:\test`) or the MySQL install process will fail.
- By default, JBoss is installed to and runs from the `[JBoss root]` directory.

## Disable the Windows UAC

- 1) To access the System Configuration Utility, go to **Start > Run**, and then enter **MSCONFIG**.
- 2) Click the **Tools** tab, and scroll down and select **Change UAC Settings**.
- 3) Click **Launch** to run the command in a new window.
- 4) Adjust the slider to the **Never notify** level.
- 5) When finished, close the command window and close the System Configuration window.
- 6) Restart your computer.

To enable the UAC again, repeat the steps above and adjust the slider to a desired level before restarting your computer.

**IMPORTANT:** The Windows User Account Control (UAC) must remain disabled for PDF Generator to work properly. You can run the installation and configuration process by turning on the UAC with the Elevate without the prompting option enabled. However, disable UAC to run PDF Generator.

## Additional Requirements

### Acrobat Reader DC extensions credential

If you are installing Acrobat Reader DC extensions, ensure that you have valid credentials. If you do not have this information, contact your Adobe account representative. You can choose to skip importing the Acrobat Reader DC extensions credentials when configuring and deploying AEM Forms on JEE and install it later using the Trust Store component in the administration console.

### Pre-configurations for PDF Generator

#### *Installing software for native file conversions*

Before you configure PDF Generator, install the software that supports the native file types for which PDF conversion support is required. Also, manually activate licenses for the software using the same user account used to run the application server.

Refer and conform to the individual licensing agreement for each native application used for conversions with AEM Forms on JEE.

PDF Generator can be extended to convert additional file types to PDF files by using third-party native file conversion applications. For the complete list of the supported application and file formats, see the [Supported Platform Combinations](#) document. Native file conversion softwares might have initial regis-

tration/activation dialogs. Dismiss all the initial registration/activation dialogs for all the PDFG user accounts configured on the server.

You do not need to install a native software application to convert the following native file formats:

- Web files (HTML)
- Print files (PS, PRN, and EPS)
- Image files (JPEG, GIF, BMP, TIFF, and PNG)

#### *Installing Adobe Acrobat for PDF Generator*

Install Acrobat DC Pro before running the AEM Forms on JEE installer. Ensure that you launch Acrobat at least once after installing it to avoid PDF Generator configuration issues. Dismiss all modal dialog boxes that appear on launching Acrobat.

The AEM Forms on JEE installer sets the `Acrobat_PATH` (case-sensitive) environment variable automatically. You can also choose to set it manually, see [Setting environment variables](#). Restart your application server after setting the environment variable.

To use AES 256 encryption in the AEM Forms on JEE Encryption service to encrypt a PDF document, you must obtain and install the Java Cryptography Extension (JCE) Unlimited Strength Jurisdiction Policy files. For Oracle JDK installed with turnkey installation, download the JCE files from Java SE Downloads. After downloading the policy file, replace the existing `local_policy.jar` and `US_export_policy.jar` files under `[Adobe_JAVA_HOME]/jre/lib/security` folder with the downloaded JAR files.

#### *Enabling multi-threaded file conversions and multi-user support for PDF Generator*

By default, PDF Generator can convert only one OpenOffice, Microsoft Word, or PowerPoint document at a time. If you enable multi-threaded conversions, PDF Generator can convert more than one document concurrently by launching multiple instances of OpenOffice or PDFMaker.

**NOTE:** *Multi-threaded conversions are not supported for Microsoft Excel, Microsoft Project, and Microsoft Publisher.*

**NOTE:** *Microsoft Excel files are not converted simultaneously. During conversion, EXCEL.exe is watched in the task manager.*

Each instance of OpenOffice or PDFMaker is launched using a separate user account. Each user account that you add must be a valid user with administrative privileges on the AEM Forms on JEE server computer. On 64-bit Windows, disable Windows UAC; see [Disable the Windows UAC](#).

When adding users for OpenOffice, Microsoft Word, or Microsoft PowerPoint, dismiss the initial activation dialogs for all users. After your AEM Forms on JEE server is configured, add AEM Forms on JEE user accounts to the administration console. See [User accounts for multi-threaded file conversions](#).

To enable multi-user support for native files and OpenOffice files on a Windows environment, add a minimum of three users with the following permissions:

Platform	User permissions
Windows 2016 Server	Users with administrative privileges

When you add users for PDF Generator native conversions, grant the user the Logon as Service right. For more information, see [Granting the Logon as Service right](#)

#### *Granting the Logon as Service right*

If you are installing PDF Generator on any Windows operating system, grant the Logon as Service right to the user that installs AEM Forms on JEE.

- 1) Select **Start > Control Panel > Administrative Tools > Local Security Policy > Local Policies > User Rights Assignment**.
- 2) Double-click **Log on as a service** and click **Add User or Group**.
- 3) Type the user name for the Microsoft Administrator and click **OK**.



# 4. Upgrading to, Configuring, and Deploying AEM Forms on JEE

## 4.1. Installing AEM Forms on JEE

The default target installation directory for AEM Forms on JEE is `C:\Adobe\Adobe_Experience_Manager_Forms\`. After you install AEM Forms on JEE, you will run Configuration Manager to perform the upgrade to AEM Forms on JEE.

### Installing AEM Forms on JEE

- 1) Do one of the following:
  - From the download site, download and extract the entire `JBoss_DVD.zip` file (the AEM Forms on JEE Electronic Software Distribution or ESD file) to your file system. Be sure to keep the directory hierarchy unchanged from the `JBoss_DVD.zip` file.  
*After extracting the ZIP file, double-click the **install.exe** file from the `\server\Disk1\InstData\Windows_64\VM` folder to launch the installer.*
  - From the JBoss DVD, navigate to the `\server` folder. To launch the installer, double-click the **install.exe** file from the `\server\Disk1\InstData\Windows_64\VM` folder.
- 2) When prompted, select the language for installation, and then click **OK**.
- 3) On the Introduction screen, click **Next**.
- 4) Select **Install Adobe Experience Manager Forms** to install AEM Forms on JEE and specify the path where you want to install it.
- 5) On the Choose Install Folder screen, accept the default directory as listed or click **Choose** and navigate to the directory where you want to install AEM Forms on JEE, and then click **Next**. This directory is referred to as *[aem-forms root]*. The default path is `C:\Adobe\Adobe_Experience_Manager_Forms\`.  
**NOTE:** It is recommended that the installation directory path should not exceed 40 characters. And it must not contain international or special characters.
- 6) On the Partial Turnkey Installation Options screen, you can include a pre-configured MySQL database server or select your own external database server to use with AEM Forms on JEE.  
**NOTE:** This screen appears only if you are performing an upgrade of partial turnkey installation of previous version.
- 7) On the Choose Installation Type screen, select the installation type and click **Next**:
  - Select **Turnkey** under Typical as the installation type for a typical turnkey installation. Turnkey option installs AEM Forms on JEE, JBoss 7.0.6 EAP, MySQL 5.7 database, and JDK 1.8.0\_74.

- Select **Partial Turnkey** under Custom if you want to use a database other than the preconfigured MySQL database. AEM Forms on JEE, JBoss application server, and JDK 1.8.0\_74 are installed by default.
- Select **Manual** if you do not want a turnkey installation but instead want a custom install. This option is selected by default if you already have a JBoss application server and MySQL database installed on your system with their Windows service names identical to those created by the AEM Forms on JEE installer.

**NOTE:** For Manual installations, see the Upgrading to AEM Forms on JEE for JBoss and Preparing to Upgrade AEM Forms on JEE guides before continuing.

- 8) **(For MySQL provided with the installer only)** On MySQL Database selection screen, set the MySQL root administrator password and, optionally, type your MySQL port number. This screen appears only if you are performing a turnkey installation, or in a partial turnkey installation when you have selected the **Include the Turnkey MySQL** option.
  - To verify that the port number is available for use, click **Test**. If the port is available, the installer displays a green check mark. If the port is in use, the installer displays a red X.
  - If the port is in use, type a new port number and repeat the process until you find a port that is available. Clicking **Reset** populates the port box with the default port number 3306.

**NOTE:** If you select **Use my database** on Partial turnkey installation options screen this screen does not appear.

**NOTE:** MySQL does not allow special characters or spaces in the user name or password. Ensure that you record this password for future reference.

- 9) Read the JBoss Application Server License Agreement and, if you agree, select **I accept** and then click **Next**.
- 10) **(For MySQL provided with the installer only)** Read the MySQL License Agreement and, if you agree, select **I accept**, and then click **Next**. This screen will appear only when **Turnkey** or **Include the Turnkey MySQL** option is selected in case of Partial Turnkey.
- 11) Read the AEM Forms on JEE license agreement and, if you agree, select **I accept**, and then click **Next**.
- 12) Review the pre-installation summary, and then click **Install**. The installation program displays the progress of the installation. This process may take several minutes to complete.
- 13) Review the Release Notes and click **Next**.
- 14) On the Install Complete screen, choose one of these options:
  - If you are upgrading Connectors for ECM, deselect **Start Configuration Manager**, click Done, and go to Preparing Connectors for ECM for upgrade section.
  - If no service pack updates are required, ensure that **Start Configuration Manager** is selected, and then click **Done**.
  - If service pack updates are required, deselect the **Start Configuration Manager** option and click **Done** to exit the installer.

**NOTE:** If you deselect **Start Configuration Manager** and exit the installer, you can run Configuration Manager later by using the ConfigurationManager.bat file located in [aem-forms root]\configurationManager\bin.

## 4.2. Install service packs

Before you complete the configuration using Configuration Manager, apply the latest service packs for AEM Forms on JEE. See [AEM Forms help hub](#) for details.

## 4.3. Import database content and move backed-up data

You created a backup of LiveCycle database in a previous section. Restore the LiveCycle database content to database configured for AEM 6.4 Forms. Refer database vendor's documentation for the exact steps to restore.

You also created a backup of LiveCycle GDS directory, EAR files, CRX Repository, Reader Extension credential file, fonts, Customer installed fonts, Watched folders, Correspondence management assets, and Forms Assets. Move the backup to AEM Forms server.

## 4.4. Configuring AEM Forms on JEE

Now that AEM Forms on JEE is installed, you are ready to begin the upgrade configurations. The Configuration Manager wizard performs the tasks required for upgrading.

### Configuring AEM Forms on JEE

**NOTE:** Press **F1** in Configuration Manager to view Help information for the screen you are viewing. You can view the configuration progress at any time by clicking View Progress Log.

**NOTE:** During configuration, if you must reset the data in Configuration Manager by using the Reset to Default option, ensure that you relaunch the Configuration Manager. Otherwise, you may encounter some missing configuration screens.

- 1) If you are continuing from the AEM Forms on JEE installation, proceed to step 3; otherwise, navigate to the `[aem-forms root]\configurationManager\bin` folder and run `ConfigurationManager.bat`.
- 2) When prompted, select the language to use, and then click **OK**.
- 3) If you are prompted to choose to use existing configuration data, click **OK**.
- 4) On the Welcome to Adobe Experience Manager Forms screen, click **Next**.
- 5) On the Upgrade Task Selection screen, select the Upgrade from Adobe Experience Manager Forms 6.2.0 option and click Next to continue.

**NOTE:** The Upgrade from Adobe Experience Manager Forms 6.2.0 option helps you upgrade from LiveCycle to AEM 6.4 Forms.

## Selecting modules

- 1) On the Modules screen, ensure that the modules you want to upgrade are selected. By default, all the modules that you select will be licensed with an Evaluation License. Click **Next**.

**NOTE:** Some modules have technical dependencies on other modules for proper configuration and functioning. Configuration Manager displays a dialog and does not allow to proceed further if mutually dependent modules are not selected.

- In AEM Forms, Adaptive Forms, Correspondence Management, HTML5 Forms, Forms Portal, HTML Workspace, Process Reporting, Forms centric workflows on OSGi, capabilities use crx-repository. If you plan to use AEM Forms for these capabilities, then crx-repository is required.
- You do not require crx-repository for AEM Forms Document Security.

**IMPORTANT:** Ensure that all modules configured in your previous version are selected. You may choose to deploy additional modules.

## Selecting Tasks

- 1) On the Task Selection screen, ensure that all the required tasks are selected, and then click **Next**.  
*NOTE: The **Configure Application Server** and **Validate Application Server Configuration** tasks are not available for selection for JBoss turnkey. The JBoss turnkey method does not support these tasks because the application server is already configured for AEM Forms on JEE.*

## Reviewing the requirements

- 1) On the In-place vs Out-of-place Upgrade screen, review the information provided and ensure that you have performed all the prerequisites and click **Next**.
- 2) On the Pre-upgrade Steps and Pre-upgrade Steps (Contd...) screens, review the requirements and perform all tasks relevant to your environment and click **Next**.

## Configuring EAR, Fonts, and GDS

- 1) On the Configure Adobe Experience Manager Forms (1 of 5) screen, click **Configure** and, when the EAR files have been configured, click **Next**. Depending on the number of modules that are included in the configuration, this process may take several minutes to complete. *NOTE: If you encounter the error message listed below, ignore the error message and continue with configuring AEM Forms.*

```
ERROR [stderr] (http-/0.0.0.0:8080-4)
com.adobe.idp.common.errors.exception.IDPException|
[com.adobe.idp.storeprovider.jdbc.DBStatement] errorCode:12552
errorCodeHEX:0x3108
```

- 2) On the Configure Adobe Experience Manager Forms (2 of 5) screen, set the directories that AEM Forms on JEE will use to access fonts and then click **Next**.

**TIP:** Click **Edit configuration** to change any values on this screen. This button is not available when the Configuration Manager is run for the first time, but is available on the second and subsequent runs of the Configuration Manager.

- (Optional) To change the default location of the **Adobe server fonts directory**, type the path or browse to the directory. The default path is [aem-forms root]/fonts
- To change the default location of the **Customer fonts directory**, click **Browse** or specify a new location for your customer fonts.

**NOTE:** Your right to use fonts provided by parties other than Adobe is governed by the license agreements provided to you by such parties with those fonts, and is not covered under your license to use Adobe software. Adobe recommends that you review and ensure that you are in compliance with all applicable non-Adobe license agreements before using non-Adobe fonts with Adobe software, particularly with respect to use of fonts in a server environment.

- (Optional) To change the default location of the **System fonts directory**, type the path or browse to the directory.
  - (Optional) To enable FIPS, ensure that Enable **FIPS** is selected. Select this option only if you require the Federal Information Processing Standards (FIPS) to be enforced.
- 3) On the Configure Adobe Experience Manager Forms (3 of 5) screen, accept the default location for the **Location of temporary directory**, or enter the path or click **Browse** to specify the path. The default location is [aem-forms root]/temp. Click **Next** to continue.
  - 4) On the Configure Adobe Experience Manager forms (4 of 5) screen, click **Browse** to specify the fully qualified path. If your previous version did not use the default GDS directory, for a successful upgrade you must specify a directory for AEM Forms on JEE, and copy the contents of the previous GDS directory to this new location.
  - 5) On the Configure Persistent Document Storage (5 of 5) screen, select either **Use GDS** or **Use database**, and then click **Configure**. For upgrade, you should select the option used in the previous version.
    - **Use GDS:** Use the file system based GDS for all persistent document storage. This option provides the best performance and a single location for GDS.
    - **Use database:** Use the database for AEM Forms on JEE for storing persistent documents and long-lived artifacts. However, the file-system based GDS is also required. Using the database simplifies backup and restore procedures.

Click **Next**.

## Configuring Acrobat for PDF Generator

- 1) **(PDF Generator only)** On the Configure Acrobat For PDF Generator screen, click **Configure** to run the configuration script. When complete, click **Next**.
- 2) On the Configure Adobe Experience Manager Forms Summary screen, click **Next**.

## Configuring the Database

**IMPORTANT:** You are installing AEM Forms on JEE on a computer that doesn't have previous version installed on it, you must manually import your previous versions database into AEM Forms on JEE database.

- 1) On the AEM Forms Database screen, specify information about the database you are going to use with AEM Forms on JEE, and then click **Verify Connection** to test the connection. Click **Next**.

## Configure CRX

- 1) The CRX Configuration screen allows you to configure the CRX repository and install it into the adobe-lifecycle-cq-author.ear EAR file.
  - a) Specify the path to the repository. The default location is `[aem-forms root]/crx-repository`.

**NOTE:** Ensure that the CRX repository path does not contain spaces and the content repository is available on all the nodes of the cluster. After the configuration is complete, copy the content repository from local node to all the nodes on the same location (as specified on the CRX configuration screen).
  - b) If you are upgrading from your existing repository, specify path of the crx-repository copied from the previous version.
  - c) Select the repository type, as appropriate and keep a note of the following points:
    - CRX3 TAR is not supported in clustered deployments.
    - If selecting CRX3 Mongo DB, specify the Mongo database name and URL to the database. The format of the URL is: `mongodb://<HOST>:<Port>`.

*HOST:* IP address of the machine running MongoDB.

*Port:* Port number used for the MongoDB. The default port number is 27017.

*CRX3 RDB:* Selecting this option sets the CRX repository persistence to RDB MK (document MK).
  - d) Click **Configure** to create or modify the required repository files at the specified location.

**NOTE:** If your AEM Forms on JEE server is running remotely, select **Server is running on remote host**, and specify the path to the repository on the remote host.

Click **Next** to continue.

## Configuring turnkey JBoss SSL

- 1) On the Configure Turnkey JBoss SSL screen, add the information to configure the SSL certificate and click **Configure JBoss SSL**, when complete click **Next**.

You can skip this step by selecting the **Skip Configuration** and configure it later using **Configuration Manager**.

- **Certificate Alias:** The alternate unique name that is used to reference the certificate.
- **Keystore filename:** The name of the keystore that is assigned to store the keys and the certificate.

## Install verification samples

- 1) (**Forms, Assembler, and Output, only**) On the Adobe Experience Manager Forms Installation Verification Sample (IVS) EAR files screen, you can install three service-specific sample applications. Select **Include IVS EARs in deployment set** and click **Next** to install these sample files.

*adobe-output-ivs-jboss.ear, adobe-assembler-ivs.ear, and adobe-forms-ivs-jboss.ear appear only if you have selected respective modules on the Modules screen.*

**NOTE:** Do not deploy the IVS EAR files to a production environment.

## Deploying AEM Forms EARs

- 1) On the Deploy AEM Forms EAR files screen, select the EAR files you want to deploy to JBoss, click **Deploy** and when complete, click **Next**. **NOTE:** *During EAR files Deployment to AEM Forms on JEE, certain errors may be displayed regarding EARs being unable to locate the correct table. You may ignore these errors.*

## AEM Forms Database Initialization

- 1) On the Adobe Experience Manager Forms Database Initialization screen, verify the host and port information, and then click **Initialize**. The database initialization task creates tables in the database, adds default data to the tables, and creates basic roles in the database. When the initialization completes successfully, and then click **Next**.

*TIP: Do not skip this step. Database initialization does not harm legacy data.*

## Server Information

- 1) On the Adobe Experience Manager Forms Information screen, type the administrator user ID and password from your previous version's installation, and click **Verify Server Connection**. When the validation is complete, click **Next**.

The server information that appears on this screen represents default values for the deployment. Verifying the server connection helps narrow troubleshooting in case failures occur in the deployment or validation. If the connection test passes but deployment or validation fails in the next few steps, connectivity issues can be eliminated from the troubleshooting process.

## Session ID Migration Errors

- 1) View and fix the errors that were encountered while migrating session IDs from your instance of previous versions installation, and then click **Next**. It is important to fix these errors else you may encounter some failed workflow invocations post-upgrade.

## AEM Forms Components Deployment

- 1) On the Adobe Experience Manager Forms Component Deployment screen, click **Deploy**. The components deployed at this time are Java archive files that plug into the service container for AEM Forms on JEE for the purposes of deploying, orchestrating, and executing services. When the deployment has completed successfully, click **Next**.
- 2) On the Adobe Experience Manager Forms Component Deployment Validation screen, click **Validate**. Configuration Manager validates that the Java archive files are deployed to and running on the J2EE server for AEM Forms. When the validation is completed successfully, click **Next**.

## Configuring AEM Forms Components

- 1) On the Configure Adobe Experience Manager Forms Components screen, select the AEM Forms on JEE modules to configure, and then click **Next**. The screens that appear next depend on your selections on this screen.

***NOTE:** If you are upgrading any Connectors for ECM module, do not select them on this screen. Only include them if you are licensing them for the first time in AEM Forms on JEE and proceed with the following steps as appropriate.*

### Configure Connector for EMC Documentum

- 1) On the Specify Client for EMC Documentum screen, do one of the following tasks:
  - Deselect the **Configure Connector for EMC Documentum Content Server** option to manually configure EMC Documentum later, and then click **Next**.
  - Leave the **Configure Connector for EMC Documentum Content Server** option selected, enter the appropriate version and directory path for EMC Documentum client, and click **Verify**. When complete, click **Next** and complete the tasks on the following screens:
    - On the Specify EMC Documentum Content Server Settings screen, specify the required values and click **Next**.
    - On the Configure Connector for EMC Documentum screen, click **Configure Documentum Connector**. When complete, click **Next**.



### Configure Connector for IBM Content Manager

- 1) On the Specify Client for IBM Content Manager screen, do one of the following tasks:
  - Deselect the **Configure Connector for IBM Content Manager** option to manually configure IBM Content Manager later, and then click **Next**.
  - Leave the Configure Connector for IBM Content Manager option selected, enter the appropriate directory path for IBM Content Manager client, and click **Verify**. When complete, click **Next** and complete the tasks on the following screens:
    - On the Specify IBM Content Manager Server Settings screen, specify the required values and click **Next**.
    - On the Configure Connector for IBM Content Manager screen, click **Configure IBM Content Manager Connector**. When complete, click **Next**.

### Configure Connector for IBM FileNet

- 1) On the Specify Client for IBM FileNet screen, do one of the following tasks:
  - Deselect the **Configure Connector for IBM FileNet Content Manager** option to manually configure IBM FileNet later, and then click **Next**.
  - Leave the Configure Connector for IBM FileNet Content Manager option selected, enter the appropriate version and directory path for IBM FileNet client, and click **Verify**. When complete, click **Next** and complete the following screens:
    - On the Specify IBM FileNet Content Server Settings screen, specify the required values and then click **Next**.
    - On the Configure Connector for IBM FileNet Process Engine screen, specify the appropriate version (if enabled) and directory path, and then click **Verify**. When complete, click **Next**.
    - On the Specify IBM FileNet Process Engine Server Settings screen, specify the required values and click **Next**.
    - On the Configure Connector for IBM FileNet screen, click **Configure FileNet Connector**. When complete, click **Next**.

### Configure Connector for Microsoft SharePoint

- 1) On the Configure Adobe Experience Manager Forms Connector for Microsoft SharePoint screen, do one of the following tasks:
  - Deselect the **Configure AEM Forms Connector for Microsoft SharePoint** option to manually configure Microsoft SharePoint later, and then click **Next**.
  - Leave the **Configure AEM Forms Connector for Microsoft SharePoint** option selected. Specify the required values, and click Configure SharePoint Connector. When complete, click **Next**.

### Verifying Configuration for ECM Connectors

- 1) On the Verify Configurations screen, do one of the following tasks:
  - If you are configuring the connectors for the first time or have modified any of the configurations on the previous screens, leave the **Restart Application Server** option selected and click

**Validate Configurations.** When successfully validated, click **Next**. *NOTE: The validation of IBM FileNet may fail if there are special characters, such as hyphen (-), underscore (\_), comma (,), or dot (.) in the directory name containing the IBM FileNet client.*

- If you wish to configure connectors later, deselect the **Restart Application Server** option and click **Validate Configurations**. When successfully validated, click **Next**.

### Manually Configuring Connectors

**NOTE:** This screen appears only when you select to configure ECM Connectors on the Configure Adobe Experience Manager Forms Component screen but then skip configuring the ECM Connectors on the connector screens.

#### Configuring AEM Forms Connectors

- 1) Create a file called `adobe-component-ext.properties` and place it in the application server's working directory.
- 2) Add an attribute that associates the ECM Java libraries with the ECM component. The format of the attribute is: `com.adobe.livecycle.Connectorfor[ECM].ext=[Comma delimited list of Jar Files, Resource files and/or Directories]`
- 3) Start the application server.
- 4) When you finish running Configuration Manager and AEM Forms on JEE is deployed and running, specify the location of the EMC Documentum Content Server, IBM Content Manager DataStore, IBM FileNet Content Engine IP/Port and user credentials for connectors in the administration console.

### Configuring PDF Generator

- 1) In the **Admin user credentials for native PDF conversions** screen, specify the user name and password of a user with administrative privileges on the server machine. Click **Add user**.  
*Add at least one administrative user for Windows Server and Click **Next**.*  
**IMPORTANT:** Ensure that you disable UAC for the users you add.
- 2) In the Document Services PDF Generator System Readiness Test screen, click **Start** to validate if the system has been configured correctly for PDF Generator. Review the System Readiness Tool Report and click **Next**.

### Configuring Acrobat Reader DC extensions Credential

- 1) On the Acrobat Reader DC extensions Credential Configuration screen, specify the details that are associated with the Reader Extensions credential that activates the module services. *NOTE: You can skip this step at this time by selecting **Configure later using AEM Forms administration console**. You can configure the Acrobat Reader DC extensions credential by using administration console after you complete the deployment. (After logging in to administration console, click **Home** > **Settings** > **Trust Store Management** > **Local Credentials**.)*  
*Click **Configure** and then click **Next**.*

## Restarting Server

- 1) Restart the JBoss application server. This is necessary as some configurations are applied only after the server is restarted. Click **Next**.

### Task summary

Review the Configuration Manager task summary list and select **Next Steps** to launch an HTML page containing information about user and administrative interfaces for AEM Forms on JEE. Click **Finish**.

## 4.5. Next steps

If you used Configuration Manager to configure and deploy AEM Forms on JEE, you can now complete the post-deployment tasks.

## 5. Import CRX repository content

LiveCycle uses TarPM persistence to store content. AEM 6.4 uses Apache JackRabbit Oak-based repository. The Oak-based repository offers three persistence formats — TarMK, MongoMK, and RDBMK. You have already selected the repository type for your AEM Forms installation on the CRX Configuration screen of Configuration Manager.

Now, to complete the upgrade, import Correspondence Management exported from LiveCycle to AEM Forms repository.

- 1) Navigate to the [crx-repository]\ folder and delete all the files and folders except the install folder.
- 2) Copy the following packages from [AEM-Installation-Directory]\configurationManager\export\crx-quickstart\install to [AEM-Installation-Directory]\crx-repository\install directory.
  - adobe-lc-forms-lccontent-pkg.zip
  - adobe-lc-landingpage-pkg.zip
  - adobe-lc-processreporting-pkg.zip
  - adobe-lc-workspace-pkg.zip
  - adobe-rightsmanagement-indexer-pkg.zip
  - adobe-lc-formsmanager-upgrade-pkg.zip
- 3) Start the application server and deploy the adobe-livecycle-cq-author.ear file located at [AEM\_forms root]\configurationManager\exportfolder to the application server.

**NOTE:** Before continuing with the next steps, wait until the ServiceEvent REGISTERED and ServiceEvent UNREGISTERED messages stop appearing in the <crx-repository>/error.log file.
- 4) Restart the AEM Forms server.

**NOTE:** Before continuing with the next steps, wait until the ServiceEvent REGISTERED and ServiceEvent UNREGISTERED messages stop appearing in the <crx-repository>/error.log file.
- 5) Import Correspondence Management. You can perform the manual steps listed below to import Correspondence Management assets:
  - a) Log in to AEM Forms server as an administrator.
  - b) Tap Adobe Experience Manager icon on the top left corner and tap Forms. Tap letters and tap Create > File Upload and select the .zip file. The .zip file is imported.
  - c) Click Adobe Experience Manager icon on the top left corner. Navigate to Tools > Deployment > Packages.
  - d) Click Upload Package. In the dialog box, browse and select the forms package exported earlier to import, click Open, and click OK. The package is uploaded.
  - e) Click Install after the package is uploaded. The assets are successfully imported.

**NOTE:** In AEM 6.4 Forms, the structure of repository has changed. If you have customized any crx-repository based component in LiveCycle, you may have to manually export the dependencies from LiveCycle crx-repository and import to AEM Forms crx-repository. For details of changes in the structure of the repository, see [Repository Restructuring in AEM 6.4](#).

## 6. Post-Deployment Activities

Perform post-deployment tasks to get started using AEM Forms on JEE modules and services after they are installed, configured, and deployed to your application server.

As part of upgrade preparation, put the previous Forms server in maintenance mode before starting the upgrade process. Disable the maintenance mode of the upgraded server before performing any other post-deployment tasks.

### 6.1. General tasks

#### Turn off maintenance mode

**NOTE:** Applicable only if you had put the previous Adobe\_Experience\_Manager\_Forms system in maintenance mode before upgrade.

In a web browser, open the following URL:

```
http://[hostname]:[port]/dsc/servlet/DSCStartupServlet?maintenanceMode=resume&user=[administrator_username]&password=[password]
```

A "now running" message is displayed in the browser window.

See Running AEM Forms on JEE in maintenance mode section in [administration help](#) for more information about maintenance mode.

#### Enable CRXDE Lite in AEM

You can enable CRXDE Lite in AEM using

`http://localhost:8080/lc/system/console/components` interface or a cURL command. For more information, see [Enabling CRXDE Lite in AEM](#), which gives steps for enabling CRXDE Lite on an OSGI environment. To use the steps given in the article to enable CRXDE Lite in AEM Forms on the JEE environment, ensure that you make the required changes, such as use the URL `http://localhost:8080/lc/system/console/components` instead of `http://localhost:4502/system/console/components`.

RELATED LINKS:

#### Change the default password of AEM Administrators

If you have upgraded to TarMK, skip the following section:

AEM embedded within AEM Forms on JEE creates two administrator users as mentioned below.

- **Super Administrator (administrator):** The Super Administrator user can access various CRX UIs, except OSGi Management Console, and perform admin operations. The default username and password are same as AEM Forms on JEE Administrator. The changed password will be applicable for both AEM Forms on JEE and Super Administrators.
- **CRX Administrator (admin):** This user can access OSGi console in addition to CRX UIs and has administrator privileges. The default username and password for the user are **admin/admin**. To change the default password, do the following:
  - a) Type the following URL in a web browser.  

```
http://[hostname]:[port]/lc/libs/granite/security/content/useradmin.html
```
  - b) Login using following credential:  
**Username:** *admin*  
**Password:** *admin*
  - c) Search for user **Administrator**.
  - d) Click on the user in left pane, the user details is displayed in the right pane.
  - e) Click on the **Edit** icon in the right pane.
  - f) On the edit page in the right pane, provide new password in the **New Password** field and current password in **Your Password** field.
  - g) Click **Save** icon in the right pane.
  - h) Re-login using the changed password to verify.

## Restarting the JBoss services

After completing the installation, restart the JBoss service to ensure that it is in a clean running state. After an install, the JBoss service will be in a high-memory-use initialization state.

**NOTE:** When you deploy a Service pack or upgrade to AEM Forms on JEE server, ensure that you delete the [Jboss-root]\standalone\tmp folder.

## Configure the serialization agent

AEM Forms requires the `sun.util.calendar` package to be whitelisted. Perform the following steps to add the package to the whitelist:

- 1) Open the Web Console in a browser window. The default URL is `http://[server]:[port]/system/console/configMgr`.
- 2) Search and open Deserialization Firewall Configuration.
- 3) In the whitelist field, add the `sun.util.calendar` package and click Save.

## Setting the correct date, time, and time zone

Setting the correct date, time, and time zone on all servers connected to your AEM Forms on JEE environment will ensure that time-dependent modules, such as Digital Signatures and Acrobat Reader DC extensions function correctly. For example, if a signature appears to have been created in the future, it will not validate.

Servers that require synchronization are database servers, LDAP servers, HTTP servers, and J2EE servers.

## Manually enabling SSL for JBoss

During Turnkey installation, the JBoss application server is set up with Secure Sockets Layer (SSL) disabled by default. To manually enable SSL, see [administrationhelp](#).

## Upgrading to Workbench

Once you have completed your AEM Forms on JEE server upgrade and verified that it is working properly, install the new version of Workbench to continue create and modify your AEM Forms on JEE applications. See [Installing Your Development Environment](#).

## Accessing administration console

Administration console is a web-based portal for accessing various configuration pages, where you set run-time properties that control the way AEM Forms on JEE operates. When you log in to administration console, you can access User Management, watched folder, and email client configuration, as well as administrative configuration options for other services. administration console also provides access to Applications and Services, which administrators use for managing archives and deploying services to a production environment.

The default user name and password for logging in to Administration Console is *administrator* and *password*. After you log in the first time, you can access User Management and change the password of the administrator account. (See [Accessing User Management](#).)

Use the same administrator account and password configured on your previous Adobe\_Experience\_Manager\_Forms system.

Before you access administration console, AEM Forms on JEE must be deployed and running on your application server.

For information about using the administration web pages, see *administration console Help* (available from the Help menu of the administration console home page).

- 1) Open a web browser and enter this URL:  
*http://localhost:8080/adminui (local deployment using the default port)*
- 2) Log in using the default user name and password:  
**User name:** *administrator*  
**Password:** *password*

- 3) Click **Log in**.
- 4) Click **Services** to access the services' pages, and click **Settings** to access the Core System Settings, User Management, and Trust Store Management pages.

### (Partial Turnkey only) Encrypting the plain-text password

Encrypt the password in the `lc_<db-name>`. file. Use the following command to encrypt the password:

```
java -cp
modules/system/layers/base/org/jboss/logging/main/jboss-logging-3.3.0.Fi
nal-redhat-1.jar;modules/system/layers/base/.overlays/layer-base-jboss-e
ap-7.0.6.CP/org/picketbox/main/picketbox-4.9.8.Final-redhat-1.jar;module
s/system/layers/base/.overlays/layer-base-jboss-eap-7.0.6.CP/org/picketb
ox/main/picketbox-commons-1.0.0.final-redhat-4.jar;modules/system/layers
/base/.overlays/layer-base-jboss-eap-7.0.6.CP/org/picketbox/main/picketb
ox-infinispan-4.9.8.Final-redhat-1.jar
org.picketbox.datasource.security.SecureIdentityLoginModule
<password-to-encrypt>
```

**NOTE:** If you do not have the `picketbox-4.9.8.Final-redhat-1.jar` file, which is used to encrypt datasource passwords for JBoss, then download it from [Indexof/techpreview/all/org/picketbox/picketbox/4.9.8.Final-redhat-1](http://indexof.techpreview.all.org/picketbox/picketbox/4.9.8.Final-redhat-1). Do not use the JAR file available at <http://wiki.jboss.org>.

### Configure Author and Publish instance

Perform the following tasks to configure Author and Publish instance only if you have installed and configured the CRX repository:

#### Configure the Author instance

The Author instance is embedded within the AEM Forms on JEE server. This implies that you do not need to make any configuration updates to the Author instance. The instance inherits all the configuration settings from the AEM Forms on JEE instance.

#### Configure the Publish instance

You must run separate author and publish instances. You can configure the two instances on the same or on different machines.

**NOTE:** Before configuring the publish instance, ensure that your author instance is configured and deployed. You can verify it by successfully logging in to the Author Instance.

- 1) Create a new appserver profile for the publish instance on the same or on a different machine.
- 2) On the author instance, navigate to the `[aem-forms root]/configurationManager/export/` directory.
- 3) Copy the `adobe-lifecycle-cq-publish.ear` file and deploy it to the appserver profile created in step 1.
- 4) Copy the `[aem-forms root]/configurationManager/export/crx-repository` directory to the file server for the publish instance.



- 5) Start the publish server with `-Dcom.adobe.livecycle.crx.home=<location for crx-repository>` parameter, where `<location for crx-repository>` is the location where you copied the crx-repository directory for the publish instance.

Now that the publish instance is up and running, you need to configure the two instances to communicate with each other.

**IMPORTANT:** If you are setting up a cluster, ensure that there are no spaces in your CRX repository path.

### Communicating between the Author and Publish instances

You need to perform certain configuration changes to enable two-way communication between the Author and Publish instances.

#### Define Publish instance URL

- 1) Go to `http://<authorHost>:<authorPort>/lc/etc/replication/agents.author/publish.html`.
- 2) Click **Edit**. The Agent Settings dialog opens.
- 3) Click the **Transport** tab and specify the URL to the publish server in the URI field.  
`http://<publishHost>:<publishPort>/lc/bin/receive?sling:authRequestLogin=1` **NOTE:** If there are multiple publish instances managed by a Load Balancer, specify the URL to the load balancer in the URI field.
- 4) Click **OK**.

**NOTE:** For author clusters, these steps need to be performed on one author instance (preferably a master instance).

#### Define publish instance URL for ActivationManagerImpl

- 1) Go to `http://<authorHost>:<authorPort>/lc/system/console/configMgr`.
- 2) Find and click the Edit icon next to the `com.adobe.livecycle.content.activate.impl.ActivationManagerImpl.namesetting`.
- 3) In the ActivationManager Publish URL field, specify the URL for the corresponding publish instance.
- 4) Click **Save**.

#### Configure reverse replication queue

- 1) Go to `http://<authorHost>:<authorPort>/lc/etc/replication/agents.author/publish_reverse.html`.
- 2) Click **Edit**. The Agent Settings dialog opens.
- 3) Click the **Transport** tab and specify the URL to the corresponding publish server in the URI field.  
**NOTE:** If there are multiple publish instances managed by a Load Balancer, specify the URL to the load balancer in the URI field.
- 4) Click **OK**.

### Define author instance URL

- 1) Go to `http://<publishHost>:<publishPort>/lc/system/console/configMgr`.
- 2) Find and click the Edit icon next to the `com.adobe.livecycle.content.activate.impl.VersionRestoreManagerImpl.namesetting`.
- 3) In the VersionRestoreManager Author URL field, specify the URL for the corresponding author instance.  
**NOTE:** If there are multiple author instances managed by a Load Balancer, specify the URL to the load balancer in the VersionRestoreManager Author URL field.
- 4) Click **Save**.

### Configure IPv6 implementation

**NOTE:** Perform these steps only if the machine/server is using an IPv6 address.

To map the IPv6 address to a host name on the server and client machines:

- 1) Navigate to the `C:\Windows\System32\drivers\etc` directory.
- 2) Open the `hosts` file in a text editor.
- 3) Add a mapping for the IPv6 address to a host name. For example:  
`2001:1890:110b:712b:d1d:9c99:37ef:7281 <ipv6_hostname>`
- 4) Save and close the file.

Ensure that you use the mapped host name instead of the IPv6 address to access the machine.

### Install Japanese fonts for Adobe Reader

If your document fragments use Japanese fonts, you must install the Japanese Language Support Package for Adobe Reader. Otherwise, your letters and forms will not render and function properly. For installing language packs, visit the downloads page for Adobe Reader.

### Migrate Correspondence Management assets

If you have upgraded from an earlier version to AEM Forms and had Correspondence Management installed, then run the Correspondence Management migration utility. The migration utility makes the assets of earlier versions compatible with AEM 6.4 Forms. You can download the utility from AEM package share. For detailed steps, see <https://helpx.adobe.com/content/help/en/aem-forms/6-4/migration-utility.html>.

## Boot delegate RSA and BouncyCastle libraries

AEM Forms requires RSA and BouncyCastle libraries to be installed with AEM Forms add-on package. Perform the following steps to boot delegate these libraries:

- 1) Stop the AEM instance.
- 2) Navigate to the [AEM installation directory]\crx-quickstart\conf\ folder and open the sling.properties file for editing.

**NOTE:** If you use [AEM installation directory]\crx-quickstart\bin\start.bat to start AEM, then edit the sling.properties located at [AEM\_root]\crx-quickstart\

- 3) Add the following properties to the sling.properties file:

```
sling.bootdelegation.class.com.rsa.jsafe.provider.JsafeJCE=com.rsa.*sling.bootdelegation.class.org.bouncycastle.jce.provider.BouncyCastleProvider=org.bouncycastle.*
```

- 4) Save and close the file. Restart the AEM instance.

**NOTE:** Before restarting the AEM Forms server, wait until the ServiceEvent REGISTERED and ServiceEvent UNREGISTERED messages stop appearing in the <crx-repository>/error.log file and the log is stable.

## Configure fonts manager service

- 1) Go to [http://\[hostname\]:\[port\]/system/console/configMgr](http://[hostname]:[port]/system/console/configMgr).
- 2) Click the CQ-DAM-Handler-Gibson Font Manager Service to open in edit mode.
- 3) Specify paths to the directories for system fonts, Adobe server fonts, and customer fonts in the respective fields. Click Save.

**NOTE:** Your right to use fonts provided by parties other than Adobe is governed by the license agreements provided to you by such parties with those fonts, and is not covered under your license to use Adobe software. Adobe recommends that you review and ensure that you are in compliance with all applicable non-Adobe license agreements before using non-Adobe fonts with Adobe software, particularly with respect to use of fonts in a server environment.

- 4) Restart the AEM Forms server.

## Performing a system image backup

After AEM Forms on JEE is installed and deployed into production areas and before the system is live, it is recommended that you perform a system image backup on servers to which AEM Forms on JEE is configured and deployed. The AEM Forms on JEE database, GDS directory, and application servers must be part of this backup. This is a complete system backup that you can use to restore the contents of your computer if your hard drive or entire computer stops working. See the “AEM Forms on JEE Backup and Recovery” topic in [administration help](#).

## 6.2. Additional Post Deployment Configurations

### Managing the MySQL database

The turnkey installation and configuration supports the transaction-safe storage engine (InnoDB) in MySQL. This means that all AEM Forms on JEE must operate in the same storage engine and have consistent version support. (See [The InnoDB Storage Engine](#).)

### Configuring AEM Forms on JEE to access LDAP

If you did not previously configure Lightweight Directory Access Protocol (LDAP), you can use the following procedure as a guideline when configuring User Management to support authentication using LDAP.

**NOTE:** Skip these steps if you configured LDAP for previous versions. LDAP configurations are migrated during the upgrade process.

- 1) Open a web browser, navigate to `http://localhost:8080/adminui`, and log in. (See [Accessing AEM Forms on JEE applications](#).)
- 2) Click **Settings > User Management > Domain Management**, and click **New Enterprise Domain**.
- 3) In the **ID** box, type a unique identifier for the domain.
- 4) In the **Name** box, type a descriptive name for the domain.
- 5) Click **Add Authentication** and, in the **Authentication Provider** list, select **LDAP**.
- 6) Click **OK** and, on the page that appears, click **Add Directory**.
- 7) In the **Profile Name** box, type a name, and then click **Next**.
- 8) Specify values in the **Server**, **Port**, **SSL**, and **Binding** boxes, as required.
- 9) Under **Populate Page With**, select a directory settings option (for example, select **Default Sun ONE values**), and then click **Next**.
- 10) Configure **User Settings** as required, and then click **Next**.
- 11) Configure **Group Settings** as required, and then click either **Test** or **Finish**.
- 12) (Optional) Test your configuration:
  - Click **Test**.
  - In the Test Directory pane, in the **Find** box, enter an object name and, in the **using** box, select the object's type, such as **Login ID**.
  - Click **Test**. If successful, your object's details are displayed. You can then click **Back**.
- 13) Click **Finish** to exit the Add Directory page, and then click **OK** again.

## Configuring the HTML digital signature feature

To use the HTML digital signature feature of Forms, complete the following procedure.

- 1) Manually deploy the `[aem-forms root]/deploy/adobe-forms-ds.ear` file to your application server.
- 2) Log in to administration console and click **Services > Forms**.
- 3) Select **HTML Digital Signature Enabled** and then click **Save**.

## Configuring PDF Generator

If you installed PDF Generator as part of your AEM Forms solution, complete the following tasks:

- [Setting environment variables](#)
- [Configuring the application server to use an HTTP proxy server](#)
- [Setting the Adobe PDF Printer as the default printer](#)
- [Configuring Acrobat](#)
- [PDF Generator watched folder performance parameters](#)
- [User accounts for multi-threaded file conversions](#)
- [Adding fonts to PDF Generator](#)
- [Configuring HTML to PDF conversions](#)
- [Installing the PDF Generator Network Printer client](#)

### Setting environment variables

If you installed PDF Generator and configured it to convert files to PDF, for some file formats, you must manually set an environment variable that contains the absolute path of the executable that is used to start the corresponding application. This table lists the native applications for which PDF Generator requires you to set up environment variables.

Application	Environment variable	Example
Adobe Acrobat DC	Acrobat_PATH	C:\Program Files (x86)Adobe\Acrobat 2015\Acrobat\Acrobat.exe
OpenOffice.org	OpenOffice_PATH	C:\Program Files\OpenOffice.org 3.3
WordPerfect	WordPerfect_PATH	C:\Program Files\WordPerfect Office 12\Programs\wpwin12.exe

**NOTE:** The `OpenOffice_PATH` environment variable is set to the installation folder instead of the path to the executable.

You do not need to set up the paths for Microsoft Office applications such as Word, PowerPoint, Excel, and Project, or for AutoCAD. The Generate PDF service starts these applications automatically if they are installed on the server.

## Configuring the application server to use an HTTP proxy server

If the computer that AEM Forms on JEE is running on uses proxy settings to access external websites, the application server should be started with the following values set as Java Virtual Machine (JVM™) arguments:

```
-Dhttp.proxyHost=[server host]
-Dhttp.proxyPort=[server port]
```

Follow the procedure listed below to start your application server with HTTP proxy host settings.

### *Add the setting to JBoss*

- 1) Ensure that the JBoss Application Server is stopped.
- 2) From command line, edit the standalone.conf.bat or standalone.conf script in the *[JBoss root]/bin/* directory.
- 3) Add the following text to the script file:

```
Set JAVA_OPTS=%JAVA_OPTS%
-Dhttp.proxyHost=[server host]
-Dhttp.proxyPort=[server port]
```
- 4) Save and close the file.

## Setting the Adobe PDF Printer as the default printer

Set the Adobe PDF Printer to be the default printer on the server. If the Adobe PDF Printer is not set as the default, PDF Generator cannot convert files successfully.

- 1) Select **Start > Printers and Faxes**.
- 2) In the Printers and Faxes window, right-click **Adobe PDF** and select **Set as Default Printer**.

## Configuring Acrobat

- 1) If an earlier version (10.0 or earlier) of Acrobat is installed, uninstall it by using Add or Remove Programs in the Windows Control Panel.
- 2) Do one of the following:
  - If you are using the media, insert the Acrobat Pro CD.
  - If you are using the ESD downloads, download Acrobat from your ESD location.
- 3) Install Acrobat DC Pro by running the AutoPlay.exe file.
- 4) Navigate to the additional\scripts folder on the AEM Forms on JEE installation media.
- 5) Run the following batch file:

```
Acrobat_for_PDFG_Configuration.bat [aem-forms root]/pdfg_config
```
- 6) Open Acrobat and select **Help>Check for updates>Preferences**.
- 7) Deselect **Automatically check for Adobe updates**.

### *Validate the Acrobat installation*

- 1) Navigate to a PDF file on your system and double-click it to open it in Acrobat. If the PDF file opens successfully, Acrobat is installed correctly.
- 2) If the PDF file does not open correctly, uninstall Acrobat and reinstall it.

**NOTE:** Ensure that you dismiss all the Acrobat dialog boxes that are displayed after the Acrobat installation is completed and disable the automatic updates for Acrobat.

Set the `Acrobat_PATH` environment variable to point to `Acrobat.exe` (such as `C:\Program Files\Adobe\Acrobat 11.0\Acrobat\Acrobat.exe`).

### *Configure native application support*

- 1) Install and validate Acrobat as described in the previous procedure.
- 2) Set Adobe PDF printer as the default printer.

### *Changing File Block Settings*

Change Microsoft Office trust center settings to enable PDFG to convert older versions of Microsoft office documents.

- 1) Click the **File tab** in any Office 2010 application. Under **Help**, click **Options**; the Options dialog box appears
- 2) Click **Trust Center**, and then click **Trust Center Settings**.
- 3) In the **Trust Center settings**, click **File Block Settings**.
- 4) In the File Type list, uncheck open for the file type that you want to be converted by PDFG.

### *Network Printer Client installation*

PDF Generator includes the Network Printer Client installer for installation of the PDF Generator Internet printer. After the installation is completed, a PDF Generator printer is added to the list of existing printers on client computers. This printer can then be used to send documents for conversion to PDF. For more information about installing the Network Printer Client, see *Installing and Deploying AEM Forms on JEE* document for your application server.

### **Installing East Asian characters in Windows Server**

When HTML files are converted to PDF by using PDF Generator, some East Asian languages, such as Japanese, Korean, and Chinese, and right-to-left languages, such as Arabic, Armenian, Georgian, Hebrew, Indic, Thai, and Vietnamese, may not be displayed in the PDF file.

To ensure that these languages are displayed in Windows Server, appropriate fonts must be present on the client and server.

- 1) Select **Start > Control Panel** and open **Regional and Language Options**.
- 2) Click the **Languages** tab and select **Install Files for East Asian Languages**.
- 3) Click the **Advanced** tab and select all the options under Code Page Conversion Tables.

If converted PDF files are still missing fonts, verify that the Arial Unicode MS (TrueType) font (ARIALUNI.TTF) is present in the C:\WINDOWS\Fonts directory.

### PDF Generator watched folder performance parameters

To avoid `java.io.IOException` error messages indicating that not enough disk space is available to perform PDF conversions using a watched folder, you can modify the settings for PDF Generator in administration console.

- 1) Log in to administration console and click **Services > Application and Services > Service Management**, and click **PDFGConfigService** in the list of services.
- 2) On the Configure PDFGConfigService page, set the following values:  
**PDFG Cleanup Scan Seconds: 1800**  
**Job Expiration Seconds: 6000**  
**Server Conversion Timeout:450**

### User accounts for multi-threaded file conversions

By default, PDF Generator can convert only one OpenOffice, Microsoft Word, or PowerPoint document at a time. If you enable multi-threaded conversions, PDF Generator can convert more than one of the documents concurrently by launching multiple instances of OpenOffice or PDFMaker (which is used to perform the Word and PowerPoint conversions).

**NOTE:** Only Microsoft Word 2007, 2013, 2016 and Microsoft PowerPoint 2007, 2013, 2016 are supported with multi-threaded file conversions. Microsoft Excel 2003, 2007, 2013, and 2016 versions are not supported.

If you need to enable multi-threaded file conversion, you must first perform the tasks outlined in the *Enabling multi-threaded file conversions and multi users support for PDF Generator* section.

- 1) In Configuration Manager, click **Services > PDF Generator > User Accounts**.
- 2) Click **Add** and enter the user name and password of a user who has administrative privileges on the AEM Forms on JEE server. If you are configuring users for OpenOffice, dismiss the initial OpenOffice activation dialogs.  
**NOTE:** If you are configuring users for OpenOffice, the number of instances of OpenOffice cannot be greater than number of user accounts specified in this step.
- 3) Restart the AEM Forms on JEE server.

### Adding fonts to PDF Generator

AEM Forms on JEE provides a central repository of fonts which is accessible to all AEM Forms on JEE modules. Make the extra fonts available to non-AEM Forms on JEE applications on the server so that PDF Generator can use these fonts to create PDF documents that are created with these applications.

#### *Non-AEM Forms on JEE applications*

[Supported Platform Combinations](#) document lists non-AEM Forms on JEE applications that PDF Generator can use for PDF generation on the server side:



### *Adding new fonts to Windows applications only*

All the Windows-only applications that are mentioned above can access all the fonts that are available in the C:\Windows\Fonts (or equivalent) folder. In addition to C:\Windows\Fonts, each of these applications may have its own private fonts folders.

Therefore, if you plan to add any custom fonts to the AEM Forms on JEE fonts repository, ensure that the same fonts are available to the Windows-only applications also by copying these fonts to either C:\Windows\Fonts or to an equivalent folder.

Your custom fonts must be licensed under an agreement that allows you to use them with the applications that have access to these fonts.

### *Adding new fonts to OpenOffice Suite*

Adding custom fonts to OpenOffice Suite is explained on the OpenOffice *Fonts-FAQ* page at <http://wiki.services.openoffice.org>.

### *Adding new fonts to other applications*

If you added support for PDF creation in other applications, see the Help for these applications to add new fonts. In Windows, copying your custom fonts to the C:\Windows\Fonts (or equivalent) folder should be sufficient.

## **Configuring HTML to PDF conversions**

The HTML-to-PDF conversion process is designed to use the settings from Acrobat DC that override the settings from PDF Generator.

**NOTE:** This configuration is required to enable the HTML-to-PDF conversion process, otherwise this conversion type will fail.

- 1) Install and validate Acrobat as described in [Configuring Acrobat](#).
- 2) Locate the pdfgen.api file in the `[aem-forms root]\plugins\x86_win32` directory and copy it to `[Acrobat root]\Acrobat\plug_ins` directory.

### *Enabling support for Unicode fonts in HTML to PDF conversions*

**IMPORTANT:** The HTML-to-PDF conversion fails if a zipped input file contains HTML files with double-byte characters in filenames. To avoid this problem, do not use double-byte characters when naming HTML files.

- 1) Copy the Unicode font to any of the following directories as appropriate for your system:
  - `[Windows root]\Windows\fonts`
  - `[Windows root]\WINNT\fonts`
- 2) Modify the font-name mapping in the `cffont.properties` file located in the `[aem-forms root]/adobe-generatepdf-dsc.jar` file:
  - Extract this archive, and locate the `cffont.properties` file and open it in an editor.
  - In the comma-separated list of Java font names, add a map to your Unicode system font for each font type. In the example below, `kochi mincho` is the name of your Unicode system font.

```
dialog=Arial, Helvetica, kochi mincho
dialog.bold=Arial Bold, Helvetica-Bold, kochi mincho ...
```

- Save and close the properties file, and then repackage and redeploy the adobe-generatepdf-dsc.jar file.

**NOTE:** On a Japanese operating system, specify the font mapping in the `cffont.properties.ja` file as well, which takes precedence over the standard `cffont.properties` file.

- 3) Ensure that the courier fonts are available at the specified location.

**TIP:** Fonts in the list are searched from left to right, using the first font found. HTML-to-PDF conversion logs return a list of all the font names that are found in the system. To determine the font name you need to map, add the font to one of the directories above, restart the server, and run a conversion. You can determine from the log files the font name to use for mapping.

*To embed the font in the generated PDF files, set the `embedFonts` property in the `cffont.properties` file to `true` (the default is `false`).*

- 4) On RedHat Enterprise Linux 6.x, the courier fonts are not available, download the `font-ibm-type1-1.0.3.zip` archive. Extract the archive at `/usr/share/fonts`. Note: Ensure that you read and accept the license.

**NOTE:** Ensure that you read and accept the license.

- 5) Create a symbolic link from `/usr/share/X11/fonts` to `/usr/share/fonts`.
- 6) Delete all the `.lst` font cache files from the `Html2PdfSvc/bin` and `/usr/share/fonts` directories.

### Installing the PDF Generator Network Printer client

PDF Generator includes an executable file to install the PDF Generator network printer on a client computer. After the installation is complete, a PDF Generator printer is added to the list of existing printers on the client computer. This printer can then be used to send documents for conversion to PDF.

**NOTE:** The Network Printer Client installation wizard available in the administration console is supported only on Windows operating system. Ensure that you use a 32-bit JVM to launch the Network Printer Client installation wizard. You will encounter an error if you use a 64-bit JVM.

If the PDFG Network Printer fails to install on Windows, use the operating system's native Add Printer utility and configure it as described in [Configure PDF Generator Network Printer on Windows using the native Add Printer wizard](#).

#### *Install the PDF Generator Network Printer Client*

**NOTE:** Before installing the PDF Generator network printer client on Windows Server 2012, Ensure that you have the Internet Printing Client feature installed on your Windows Server 2012. For installing the feature, see Windows Server 2012 Help.

- 1) Ensure that you successfully installed PDF Generator on your server.
- 2) Do one of the following:
  - From a Windows client computer, enter the following URL in your web browser, where `[host]` is the name of the server where you installed PDF Generator and `[port]` is the application server port used:

```
http://[host]:[port]/pdfg-ipp/install
```

- In administration console, click **Home > Services > PDF Generator Evaluation > PDFG Network Printer**. In the **PDFG Network Printer Installation** section, click **Click here** to launch the PDFG Network Printer Installation.
- 3) On the Configure Internet Port screen, select **Use the specified user account** and provide the credentials of a AEM Forms on JEE user who has the PDFG Administrator/User role. This user must also have an email address that can be used to receive the converted files. To have this security setting applied to all users on the client computer, select **Use the same security options for all users**, and then click **OK**. *NOTE: If the users' password changes, then users will need to reinstall the PDFG Network Printer on their computers. You cannot update the password from administration console.*

*Upon successful installation, a dialog box appears, indicating that "The Printer PDF Generator has been successfully installed."*
- 4) Click **OK**. You will now have a printer named *PDF Generator* in your list of available printers.

#### *Configure PDF Generator Network Printer on Windows using the native Add Printer wizard*

- 1) Click **Start > Printers and Faxes** and double-click **Add Printer**.
- 2) Click **Next**, select **A network printer, or a printer attached to another computer**, and then click **Next**.
- 3) Select **Connect to a printer on the Internet or on a home or office network** and type the following URL for the PDFG printer, where *[host]* is the server name and *[port]* is the port number where the server is running:  
`http://[host]:[port]/pdfg-ipp/printer`
- 4) On the Configure Internet Port screen, select **Use the specified user account** and provide valid User Management credentials.
- 5) In the **Printer Driver Select** box, choose any standard PostScript-based printer driver (for example, HP Color LaserJet PS).
- 6) Complete the installation by choosing appropriate options (for example, setting this printer as default).

**NOTE:** The user credentials used while adding the printer must have a valid email ID configured in User Management to receive the response.

- 1) Configure the email service's sendmail service. Provide a valid SMTP server and authentication information in the service's configuration options.

#### *Install and configure the PDF Generator Network Printer Client using Proxy server port forwarding*

- 1) Configure port forwarding on the CC Proxy server on a particular port to the AEM Forms on JEE server, and disable the authentication at proxy server level (since AEM Forms on JEE uses its own authentication). If a client connects to this Proxy server on the forwarded port, then all the requests will be forwarded to the AEM Forms on JEE server.
- 2) Install PDFG Network Printer using the following URL:  
`http://[proxy server]:[forwarded port]/pdfg-ipp/install.`
- 3) Provide the necessary credentials for authentication of the PDFG Network Printer.

- 4) The PDFG Network Printer will be installed on the client machine which you can use for PDF conversion using the firewall protected AEM Forms on JEE server.

### Enable PDF Conversion for Microsoft Word document containing protected fields

The PDF Generator supports Microsoft Word documents containing protected fields. To enable PDF Conversion for Microsoft Word document containing protected fields, change the file type settings:

- 1) In the **administration console**, navigate to **Services > PDF Generator > File Type Settings**, and open your file type settings profile.
- 2) Expand the **Microsoft Word** option and select the **Preserve document markup in Adobe PDF (for Microsoft Office 2003 or later)** option.
- 3) Click **Save As**, specify name of the file type setting, and click **OK**.

### Configuring Connector for EMC Documentum

**NOTE:** Make sure your ECM is upgraded to the versions AEM 6.4 Forms supports.

If you installed Connector for EMC Documentum as part of your AEM Forms on JEE solution, complete the following procedure to configure the service to connect to the Documentum repository.

#### Configure Connector for EMC Documentum

- 1) Locate the `adobe-component-ext.properties` file in the `[JBoss root]/bin` folder (if the file does not exist, create it).
- 2) Add a new system property that provides the following Documentum Foundation Classes JAR files:
  - `dfc.jar`
  - `aspectjrt.jar`
  - `log4j.jar`
  - `jaxb-api.jar`
  - `configservice-impl.jar`
  - `configservice-api.jar`
  - `commons-codec-1.3.jar`
  - `commons-lang-2.4.jar`

*The new system property should take on this form:*

```
[component id].ext=[JAR files and/or folders]
```

*For example, using default Content Server and Documentum Foundation Classes installations, add to the file one of the following system properties on a new line, with no line breaks, and end the line with a carriage return:*

- Connector for EMC Documentum 7.0 only:
 

```
com.adobe.livecycle.ConnectorforEMCDocumentum.ext=
C:/Program Files/Documentum/Shared/dfc.jar,
C:/ProgramFiles/Documentum/Shared/aspectjrt.jar,
C:/Program Files/Documentum/Shared/log4j.jar,
```

```
C:/Program Files/Documentum/Shared/jaxb-api.jar,  
C:/Program Files/Documentum/Shared/configservice-impl.jar,  
C:/Program Files/Documentum/Shared/configservice-api.jar  
C:/Program Files/Documentum/Shared/commons-codec-1.3.jar  
C:/Program Files/Documentum/Shared/commons-lang-2.4.jar
```

**NOTE:** The above text contains formatting characters for line breaks. If you copy and paste this text, you must remove the formatting characters.

- 3) Open a web browser and enter this URL:  
`http://[host]:[port]/adminui`
- 4) Log in using the default user name and password:  
**User name:** *administrator*  
**Password:** *password*
- 5) Navigate to **Services > Connector for EMC Documentum > Configuration Settings** and perform these tasks:
  - Type all the required Documentum repository information.
  - To use Documentum as your repository provider, under Repository Service Provider Information, select **EMC Documentum Repository Provider**, and then click **Save**. For more information, click the Help link in the upper-right corner of the page in the [Administration help](#).
- 6) (Optional) Navigate to **Services > Connector for EMC Documentum > Repository Credentials Settings**, click **Add**, specify the Docbase information, and then click **Save**. (For more information, click **Help** in the upper-right corner.)
- 7) If the application server is not currently running, start the server. Otherwise, stop and then restart the server.
- 8) Open a web browser and enter this URL.  
`http://[host]:[port]/adminui`
- 9) Log in using the default user name and password:  
**User name:** *administrator*  
**Password:** *password*
- 10) Navigate to **Services > Applications and Services > Service Management** and select these services:
  - EMCDocumentumAuthProviderService
  - EMCDocumentumContentRepositoryConnector
  - EMCDocumentumRepositoryProvider
- 11) Click **Start**. If any of the services do not start correctly, check the settings you completed earlier.
- 12) Do one of the following tasks:
  - To use the Documentum Authorization service (EMCDocumentumAuthProviderService) to display content from a Documentum repository in the Resources view of Workbench, continue with this procedure. Using the Documentum Authorization service overrides the default AEM Forms on JEE authorization and must be configured to log in to Workbench using Documentum credentials.

- To use the AEM Forms on JEE repository, log in to Workbench by using the AEM Forms on JEE super administrator credentials (by default, *administrator* and *password*).

*You have now completed the required steps for this procedure. Use the credentials provided in step 19 for accessing the default repository in this case and use the default AEM Forms on JEE authorization service.*

- 13) Enable the Remoting and EJB endpoints by doing these tasks:
  - Log in to administration console and click **Home > Services > Application and Services > Service Management**.
  - Filter the category *Connector for EMC Documentum* and click **EMC DocumentumContentRepositoryConnector:1.0**.
  - Select the disabled endpoints and enable them.
- 14) Restart the application server.
- 15) Log in to administration console and click **Settings > User Management > Domain Management**.
- 16) Click **New Enterprise Domain**, and type a domain ID and name. The domain ID is the unique identifier for the domain. The name is a descriptive name for the domain.

*NOTE: Use only single-byte (ASCII) characters for the ID. (See “Adding enterprise domains” in administration help.)*
- 17) Add a custom authentication provider:
  - Click **Add Authentication**.
  - In the Authentication Provider list, select **Custom**.
  - Select **EMCDocumentumAuthProvider** and then click **OK**.
- 18) Add an LDAP authentication provider:
  - Click **Add Authentication**.
  - In the Authentication Provider list, select **LDAP**, and then click **OK**.
- 19) Add an LDAP directory:
  - Click **Add Directory**.
  - In the Profile Name box, type a unique name, and then click **Next**.
  - Specify values for the **Server**, **Port**, **SSL**, **Binding**, and **Populate page with** options. If you select **User** for the **Binding** option, you must also specify values for the **Name** and **Password** fields.
  - (Optional) Select **Retrieve Base DN** to retrieve base domain names, as required.
  - Click **Next**, configure the user settings, click **Next**, configure group settings, as required, and then click **Next**.

*For details about the settings, click **User Management Help** in the upper-right corner of the page.*
- 20) Click **OK** to exit the Add Directory page and then click OK again.
- 21) Select the new enterprise domain and click **Sync Now**. Depending on the number of users and groups in your LDAP network and the speed on your connection, the synchronization process may take several minutes.

(Optional) To verify the status of the synchronization, click **Refresh** and view the status in the *Current Sync State* column.

- 22) Navigate to **Settings > User Management > Users and Groups**.
- 23) Search for users that were synchronized from LDAP and perform these tasks:
  - Select one or more users and click **Assign Role**.
  - Select one or more AEM Forms on JEE roles and click **OK**.
  - Click **OK** a second time to confirm the role assignment.

*Repeat this step for all users that you assign roles to. For more information, click **User Management Help** in the upper-right corner of the page.*

- 24) Start Workbench and log in by using the credentials for the Documentum repository:  
**Username:** *[username]@[repository\_name]*  
**Password:** *[password]*  
*After you log in, the Documentum repository appears in the Resources view within Workbench. If you do not log in using the username@repository\_name, Workbench attempts to log in to the default repository.*
- 25) (Optional) To install the AEM Forms on JEE Samples for Connector for EMC Documentum, create a Documentum repository named Samples, and then install the samples in that repository.

After you configure the Connector for EMC Documentum service, see *administration help* for information about configuring Workbench with your Documentum repository.

## Configuring the Connector for IBM Content Manager

**NOTE:** AEM forms supports IBM Content Manager. See the [Supported Platform Combinations](#) document and make sure you are using a supported version.

If you installed the Connector for IBM Content Manager as part of your AEM Forms on JEE solution, complete the following procedure to configure the service to connect to the IBM Content Manager data-store.

### Configure Connector for IBM Content Manager

- 1) Locate the `adobe-component-ext.properties` file in the `[JBoss root]/bin` folder. If the file does not exist, create it.
- 2) Add a new system property that provides the location of the following IBM IIC JAR files:
  - `cmb81.jar`
  - `cmbcm81.jar`
  - `cmbicm81.jar`
  - `cmblog4j81.jar`
  - `cmbSDK81.jar`
  - `cmbutil81.jar`
  - `cmbutilicm81.jar`

- cmbview81.jar
- cmbwas81.jar
- cmbwcm81.jar
- cmgmt

**NOTE:** cmgmt is not a JAR file. On Windows, by default, this folder is at C:/Program Files/IBM/db2cmv8/.

- common.jar
- db2jcc.jar
- db2jcc\_license\_cisuz.jar
- db2jcc\_license\_cu.jar
- ecore.jar
- ibmjgssprovider.jar
- ibmjsseprovider2.jar
- ibmpkcs.jar
- icrm81.jar
- jcache.jar
- log4j-1.2.8.jar
- xerces.jar
- xml.jar
- xsd.jar

*The new system property looks similar to the following:*

```
[component id].ext=[JAR files and/or folders]
```

*For example, using a default DB2 Universal Database Client and I14C installation, in the file, add the following system property on a new line, with no line breaks, and end the line with a carriage return:*

```
C:/Program Files/IBM/db2cmv8/cmgmt,  
C:/Program Files/IBM/db2cmv8/java/jre/lib/ibmjsseprovider2.jar,  
C:/Program Files/IBM/db2cmv8/java/jre/lib/ibmjgssprovider.jar,  
C:/Program Files/IBM/db2cmv8/java/jre/lib/ibmpkcs.jar,  
C:/Program Files/IBM/db2cmv8/java/jre/lib/xml.jar,  
C:/Program Files/IBM/db2cmv8/lib/cmbview81.jar,  
C:/Program Files/IBM/db2cmv8/lib/cmb81.jar,  
C:/Program Files/IBM/db2cmv8/lib/cmbcm81.jar,  
C:/Program Files/IBM/db2cmv8/lib/xsd.jar,  
C:/Program Files/IBM/db2cmv8/lib/common.jar,  
C:/Program Files/IBM/db2cmv8/lib/ecore.jar,  
C:/Program Files/IBM/db2cmv8/lib/cmbicm81.jar,  
C:/Program Files/IBM/db2cmv8/lib/cmbwcm81.jar,  
C:/Program Files/IBM/db2cmv8/lib/jcache.jar,  
C:/Program Files/IBM/db2cmv8/lib/cmbutil81.jar,  
C:/Program Files/IBM/db2cmv8/lib/cmbutilicm81.jar,
```



```
C:/Program Files/IBM/db2cmv8/lib/icmrm81.jar,  
C:/Program Files/IBM/db2cmv8/lib/db2jcc.jar,  
C:/Program Files/IBM/db2cmv8/lib/db2jcc_license_cu.jar,  
C:/Program Files/IBM/db2cmv8/lib/db2jcc_license_cisuz.jar,  
C:/Program Files/IBM/db2cmv8/lib/xerces.jar,  
C:/Program Files/IBM/db2cmv8/lib/cmblog4j81.jar,  
C:/Program Files/IBM/db2cmv8/lib/log4j-1.2.8.jar,  
C:/Program Files/IBM/db2cmv8/lib/cmbsdk81.jar,  
C:/Program Files/IBM/db2cmv8/lib/cmbwas81.jar
```

- 3) If the application server is not currently running, start the server; otherwise, stop and then restart the server.

You can now connect to the IBM Content Manager datastore from the IBMCMConnectorService Property Sheets by using the Use User Credentials as the login mode.

You have now completed the required steps for this procedure.

(Optional) If you want to connect to IBM Content Manager datastore from IBMCMConnectorService Property Sheets by using the Use Credentials From Process Context as the login mode, complete the following procedure.

### Connect using Use Credentials from process context login mode

- 1) Open a web browser and enter this URL:  
*http://[host]:[port]/adminui*
- 2) Log in using the super administrator credentials. Default values set during installation are:  
**User name:** *administrator*  
**Password:** *password*
- 3) Click **Services > Connector for IBM Content Manager > Configuration Settings**.
- 4) Specify the required repository information and click **Save**. For more information about the IBM Content Manager repository information, click the **Help** link in the upper-right corner of the page.
- 5) Do one of these tasks:
  - To use the IBM Content Manager Authorization service (IBMCMProviderService) to use content from an IBM Content Manager datastore, in the Processes view of Workbench, continue with this procedure. Using the IBM Content Manager Authorization service overrides the default AEM Forms on JEE authorization and must be configured to log in to Workbench by using IBM Content Manager credentials.
  - To use the System Credentials provided in step 4 to use content from an IBM Content Manager datastore, in the Processes view of Workbench, log in to Workbench by using the AEM Forms on JEE super administrator credentials (by default, *administrator* and *password*). You have now completed the required steps for this procedure. The System Credentials that are provided in step 4 use the default AEM Forms on JEE authorization service for accessing the default repository in this case.
- 6) Log in to the administration console, and click **Settings > User Management > Domain Management**.

- 7) Click **New Enterprise Domain** and type a domain ID and name. The domain ID is the unique identifier for the domain. The name is a descriptive name for the domain.  
*NOTE: Use only single-byte (ASCII) characters for the ID. (See Adding enterprise domains in [administration help](#).)*
- 8) Add a custom authentication provider:
  - Click **Add Authentication**.
  - In the **Authentication Provider** list, select **Custom**, and then select **IBMCMAuthProviderService** and click **OK**.
- 9) Add an LDAP authentication provider:
  - Click **Add Authentication**.
  - In the **Authentication Provider** list, select **LDAP** and then click **OK**.
- 10) Add an LDAP directory:
  - Click **Add Directory**.
  - In the **Profile Name** box, type a unique name, and then click **Next**.
  - Specify values for the **Server**, **Port**, **SSL**, **Binding**, and **Populate page with** options. If you select **User** for the **Binding** option, you must also specify values for the **Name** and **Password** fields. (Optional) Select **Retrieve Base DN** to retrieve base domain names, as required. When finished, click **Next**.
  - Configure the user settings, click **Next**, configure group settings as required, and then click **Next**.

*For details about the above settings, click the **Help** link in the upper-right corner of the page.*
- 11) Click **OK** to exit the Add Directory page and click **OK** again.
- 12) Select the new enterprise domain and click **Sync Now**. Depending on the number of users and groups in your LDAP network and the speed on your connection, the synchronization process may take several minutes.
- 13) To verify the status of the synchronization, click **Refresh** and view the status in the **Current Sync State** column.
- 14) Navigate to **Settings > User Management > Users and Groups**.
- 15) Search for users that were synchronized from LDAP and do these tasks:
  - Select one or more users and click **Assign Role**.
  - Select one or more AEM Forms on JEE roles and click **OK**.
  - Click **OK** a second time to confirm the role assignment.

*Repeat this step for all users that you want to assign roles to. For more information, click the **Help** link in the upper-right corner of the page.*
- 16) Start Workbench and log in using the following credentials for IBM Content Manager datastore:  
**Username:** *[username]@[repository\_name]*  
**Password:** *[password]*

*The IBM Content Manager datastore can now be used in the Processes view within Workbench when the login mode for IBMCMConnectorService orchestrable components is selected as **Use Credentials from process context**.*

## Configuring Kerberos authentication support for AEM Forms on JEE Connector for Microsoft SharePoint

- 1) Navigate to [aem-forms root]/jboss/standalone/configuration.
  - 2) Open lc\_turnkey.xml file for editing.
  - 3) Add following text to lc\_turnkey.xml file:
 

```
<security-domain name="LC_SP_CONNECTOR">
<authentication>
<login-module code="com.sun.security.auth.module.Krb5LoginModule"
flag="required"> </login-module>
</authentication>
</security-domain>
```
  - 4) Navigate to [aem-forms root]/jboss/bin
  - 5) Create a file named krb5.conf
  - 6) Modify following text according to your environment settings. Add modified text to krb5.conf file:
 

```
[libdefaults]
default_realm = SP.COM
default_checksum = rsa-md5
[realms]
SP.COM = {
kdc = hostname.sp.com
}
[domain_realm]
.sp.com = SP.COM
```
- Note:** You must ensure that,
- **SP.COM** is replaced with the domain name in capital letters.
  - **hostname.sp.com** is replaced with fully qualified domain name of the domain controller and domain name is in small letters.
  - **.sp.com** with replaced with domain name in small letters prefixed with a period (.).
- 7) Copy file addSpnego.mar from [aem-forms root]/configurationManager/bin/Kerberos/modules/to [aem-forms root]/jboss /bin/modules/ directory. **NOTE: If the directory named modules does not exists, create it.**
  - 8) Restart JBoss Server to complete the configuration.

## Configuring the Connector for IBM FileNet

If you installed Connector for IBM FileNet as part of your AEM Forms, you must configure the service to connect to the FileNet object store.

- 1) Add a new system property that provides the location of these FileNet Application Engine JAR files:

**NOTE:** Add the `pe.jar` file only if your deployment uses the `IBMFileNetProcessEngineConnector` service. The new system property should reflect this structure:

```
[component id].ext=[JAR files and/or folders]
```

**NOTE:** Do not overwrite the existing contents of the properties file. Simply append the new system property to the contents.

*For example, using a default FileNet Application Engine installation on a Windows operating system, add the following system property on a new line with no line breaks and end the line with a carriage return:*

**NOTE:** The following text contains formatting characters for line breaks. If you copy this text to a location outside this document, remove the formatting characters when you paste it to the new location.

```
com.adobe.livecycle.ConnectorforIBMFileNet.ext=  
C:/Program Files/FileNet/AE/CE_API/lib2/javaapi.jar,  
C:/Program Files/FileNet/AE/CE_API/lib2/log4j-1.2.13.jar
```

- 2) (FileNet Process Engine Connector only) Configure the connection properties for the process engine as follows:

- Using a text editor, create a file with the following content as a single line and end the line with a carriage return:

*(FileNet 5.2 only)*

```
RemoteServerUrl =  
comp:http://[contentserver_IP]:[contentengine_port]/wsi/FNCEWS40MTOM  
/
```

- Save the file as `WcmApiConfig.properties` in a separate folder, and add the location of the folder that contains the `WcmApiConfig.properties` file to the `adobe-component-ext.properties` file.

*For example, if you save the file as `c:/pe_config/WcmApiConfig.properties`, add the path `c:/pe_config` to the `adobe-component-ext.properties` file.*

**NOTE:** The filename is case-sensitive.

- 3) If the application server is not currently running, start the server. Otherwise, stop and then restart the server.
- 4) Open a web browser and enter this URL:  
`http://[host]:[port]/adminui`
- 5) Log in using the default user name and password:  
**User name:** `administrator`  
**Password:** `password`
- 6) Click **Services > Connector for IBM FileNet**.

- 7) Provide the Content Engine URL. For example,  
`cemp:http://ContentEngineHostNameorIP:port/wsi/FNCEWS40MTOM?jaasConfigurationName=FileNetP8WSI`
- 8) Provide all the required FileNet repository information and, under Repository Service Provider Information, select **IBM FileNet Repository Provider**.  
*If your deployment uses the optional process engine service, under Process Engine Settings, select **Use Process Engine Connector Service** and specify the process engine settings. For more information, click the **Help** link in the upper-right corner of the page.*  
**NOTE:** The credentials that you provide in this step are validated later when you start the IBM FileNet repository services. If the credentials are not valid, an error is thrown and the services will not start.
- 9) Click **Save** and navigate to **Services > Applications and Services > Service Management**.
- 10) Select the check box next to **IBMFileNetProcessEngineConnector** (if configured) and then click **Start**.
- 11) Do one of the following tasks:
  - To use the FileNet Authorization service (**IBMFileNetAuthProviderService**) to display content from a FileNet object store in the Resources view of Workbench, continue with this procedure. Using the FileNet Authorization service overrides the default AEM Forms authorization and must be configured to log in to Workbench by using FileNet credentials.
  - To use the AEM forms repository, log in to Workbench by using the super administrator credentials (by default, *administrator* and *password*). The credentials provided in step 16 use the default AEM Forms authorization service for accessing the default repository in this case.
- 12) Enable Remoting and EJB endpoints by doing these tasks:
  - Log in to administration console and click **Home > Services > Application and Services > Service Management**.
  - Filter the category *Connector for IBM FileNet* and click **IBMFileNetContentRepositoryConnector:1.0**.
  - Select the disabled endpoints and enable them.
- 13) Restart your application server.
- 14) Log in to administration console and click **Settings > User Management > Domain Management**.
- 15) Click **New Enterprise Domain** and then type a domain ID and name. The domain ID is the unique identifier for the domain. The name is a descriptive name for the domain.
- 16) Add a custom authentication provider:
  - Click **Add Authentication**.
  - In the **Authentication Provider** list, select **Custom**.
  - Select **IBMFileNetAuthProviderService** and then click **OK**.
- 17) Add an LDAP authentication provider:
  - Click **Add Authentication**.
  - In the **Authentication Provider** list, select **LDAP** and then click **OK**.
- 18) Add an LDAP directory:

- Click **Add Directory** and, in the **Profile Name** box, type a unique name, and then click **Next**.
- Specify values for the **Server**, **Port**, **SSL**, **Binding**, and **Populate page with** options. If you select **User** for the **Binding** option, you must also specify values for the **Name** and **Password** fields.
- (Optional) Select **Retrieve Base DN** to retrieve base domain names, as required. When finished, click **Next**.
- Configure the user settings, click **Next**, configure group settings as required, and then click **Next**.

*For details about the settings, click **Help** link in the upper-right corner of the page.*

- 19) Click **OK** to exit the Add Directory page, and then click **OK** again.
- 20) Select the new enterprise domain and click **Sync Now**. Depending on the number of users and groups in your LDAP network and the speed on your connection, the synchronization process may take several minutes.

*(Optional) To verify the status of the synchronization, click **Refresh** and view the status in the **Current Sync State** column.*

- 21) Navigate to **Settings > User Management > Users and Groups**.
- 22) Search for users that were synchronized from LDAP and perform these tasks:
  - Select one or more users and click **Assign Role**.
  - Select one or more AEM Forms roles and click **OK**.
  - Click **OK** a second time to confirm the role assignment.

*Repeat this step for all users you want to assign roles to. For more information, click the **Help** link in the upper-right corner of the page.*

- 23) Start Workbench and log in using the following credentials for the IBM FileNet repository:

**User name:** [username]@[repository\_name]

**Password:** [password]

*The FileNet object store should now be visible in the Resources view within Workbench. If you do not log in using the username@repository name, Workbench attempts to log in to the default repository specified in step 16.*

- 24) (Optional) If you intend to install the AEM Forms Samples for Connector for IBM FileNet, create a FileNet object store named *Samples* and install the samples in that object store.

*After you configure Connector for IBM FileNet, it is recommended that you see administration help for information about configuring Workbench functions properly with your FileNet repository.*

# 7. Advanced Configuration Activities

## 7.1. Enabling Federal Information Processing Standard (FIPS)

AEM Forms provides a FIPS mode to restrict data protection to Federal Information Processing Standard (FIPS) 140-2 approved algorithms using the RSA BSAFE Crypto-C 2.1 encryption module.

If you did not enable this option by using Configuration Manager during AEM Forms configuration or if you enable it but want to turn it off, you can change this setting through administration console.

Modifying FIPS mode requires you to restart the server.

FIPS mode does not support Acrobat versions earlier than 7.0. If FIPS mode is enabled and the Encrypt With Password and Remove Password processes include the Acrobat 5 setting, the process fails.

In general, when FIPS is enabled, the Assembler service does not apply password encryption to any document. If this is attempted, a `FIPSModeException` is thrown, indicating that “Password encryption is not permitted in FIPS mode.” Additionally, the `PDFsFromBookmarks` element is not supported in FIPS mode when the base document is password-encrypted.

- 1) Log in to administration console.
- 2) Click **Settings > Core System Settings > Configurations**.
- 3) Select **Enable FIPS** to enable FIPS mode or deselect it to disable FIPS mode.
- 4) Click **OK** and restart the application server.

**NOTE:** AEM Forms software does not validate code to ensure FIPS compatibility. It provides a FIPS operation mode so that FIPS-approved algorithms are used for cryptographic services from the FIPS-approved libraries (RSA).

## 7.2. Enabling AES-256 encryption

To use AES 256 encryption for PDF files, obtain and install the Java Cryptography Extension (JCE) Unlimited Strength Jurisdiction Policy files. These files replace the `local_policy.jar` and `US_export_policy.jar` files in the `[Adobe_JAVA_HOME]/jre/lib/security` folder. For example, if you are using Oracle JDK 1.8, copy the downloaded files to the `[aem-forms root]/Java/jdk1.8.0_74/jre/lib/security` folder.

You can download these files from *Java SE Downloads*.

# 8. Appendix - Install using the Command Line Interface

## 8.1. Overview

AEM Forms on JEE provides a command line interface (CLI) for the installation program. The CLI is intended to be used by advanced users of AEM Forms on JEE or in server environments which do not support the use of the Graphical User Interface (GUI) of the installation program. The CLI runs in console mode with one interactive session for all install operations.

After you start the installation process, follow the on-screen instructions to choose your installation options. Respond to each prompt to proceed to the next step in the installation.

**NOTE:** If you want to change a choice that you made on a previous step, type `back`. You can cancel the installation at any time by typing `quit`.

## 8.2. Install AEM Forms on JEE

- 1) Open a command prompt and navigate to the folder in the installation media or your hard disk that contains the installer executable:
  - (Windows) `server\Disk1\InstData\Windows_64\NoVM`
  - (Linux) `server/Disk1/InstData/Linux/NoVM`
- 2) Open a command prompt and run the following command:
  - (Windows) `install.exe -i console`
  - (Non-Windows) `./install.bin -i console`

**NOTE:** Entering the command without the `-i console` option launches the GUI-based installer.
- 3) Respond to the prompts as described in the following table:

Prompt	Description
Choose Locale	Select the locale for the installation to use by entering a value between 1 and 3. You can select the default value by pressing <b>Enter</b> . The options are Deutsch, English, and Français. English is the default locale.



Prompt	Description
Upgrade Installation	Select the Install Adobe Experience Manager Forms installation option and press <b>Enter</b> . Do not select the option to upgrade.
Choose Install Folder	On the Destination screen, press <b>Enter</b> to accept the default directory or type the new installation directory location. Do not use accented characters in the directory name. Otherwise, the CLI will ignore the accents and create a directory after modifying the accented characters.
AEM forms on JEE Server License Agreement	Press <b>Enter</b> to read through the pages of the license agreement. If you agree to the agreement, type <b>Y</b> and press <b>Enter</b> .
Pre-Installation Summary	Press <b>Enter</b> to continue installation with the choices you have made. Type <i>back</i> to go back to previous steps and change any of the settings.
Ready To Install	Press <b>Enter</b> to start the installation process.
Installing	During the installation process, the progress bar advances to indicate the progress of installation.
Configuration Manager	Press <b>Enter</b> to complete the installation of AEM Forms on JEE. You can run the Configuration Manager in GUI mode by invoking the following script: (Windows): C:\Adobe\Adobe_Experience_Manager_Forms\configurationManager\bin\ConfigurationManager.bat (Non-Windows): /opt/adobe/Adobe_Experience_Manager_Forms/configurationManager/bin/ConfigurationManager.sh
Installation Complete	Press <b>Enter</b> to exit the installer.

### 8.3. Error logs

If an error occurs, you can review the `install.log` in the log directory of your installation:

- (Windows) `[aem-forms root]\log`

# 9. Appendix - Configuration Manager Command Line Interface

The CLI is intended to be used in server environments that do not support the use of the Graphical User Interface (GUI) of the Configuration Manager.

## 9.1. Order of operations

The Configuration Manager CLI must follow the same order of operations as the GUI version of the Configuration Manager. Ensure that you use the CLI operations in this order:

- 1) Shut down the JBoss application server. (Upgrade Turnkey only)
- 2) Migrate the GDS directory content. (Upgrade Turnkey only)
- 3) Configure AEM Forms on JEE.
- 4) Configure CRX.
- 5) Update AEM Forms on JEE core settings.
- 6) Initialize AEM forms on JEE.
- 7) Validate AEM Forms on JEE.
- 8) Deploy the AEM Forms on JEE modules.
- 9) Validate the AEM Forms on JEE module deployment.
- 10) Upgrade the crx-repository.
- 11) Migrate Data Essential to AEM Forms on JEE
- 12) Post-deployment configurations.
- 13) Check system readiness for PDF Generator.
- 14) Add administrator user for PDF Generator.
- 15) Configure Connector for IBM Content Manager.
- 16) Configure Connector for IBM FileNet.
- 17) Configure Connector for EMC Documentum.
- 18) Configure Connector for SharePoint.

**IMPORTANT:** You must restart each of your cluster nodes after you complete Configuration Manager CLI operations.

**IMPORTANT:** You must restart your application server after you complete Configuration Manager CLI operations.

## 9.2. Command Line Interface property file

The Configuration Manager CLI requires two property files containing the defined properties for your AEM Forms on JEE environment. The templates for the properties files, `cli_propertyFile_template.txt` and `cli_propertyFile_upgrade_template.txt`, are located in the `[aem-forms root]/configurationManager/bin` folder.

- `cli_propertyFile_template.txt` file contains properties that apply to AEM Forms on JEE installation and configuration scenarios, in general.
- `cli_propertyFile_upgrade_template.txt` file contains properties specific to upgrading tasks. Both are required for upgrading from a previous version of AEM Forms on JEE.

Create copies of these files and edit the values. You should create the property file according to your installation. Use one of the following methods.

- Copy the property files `cli_propertyFile_template.txt` and `cli_propertyFile_upgrade_template.txt` to use these as a template and edit the values based on the Configuration Manager operations you intend to use.
- Use the GUI of the Configuration Manager and then use the property file created by the GUI version as the CLI version property file. When you run the `[aem-forms root]/configurationManager/bin/ConfigurationManager.bat/sh` file, the `userValuesForCLI.properties` file is created in the `[aem-forms root]/configurationManager/config` directory. You can use this file as input for the Configuration Manager CLI.

**NOTE:** The file does not contain the properties listed below, which are optional. If required, you can manually add these properties to the file:

- `ApplicationServerRestartRequired`
- `lcGdsLocation`
- `lcPrevGdsLocation`

**NOTE:** In the CLI properties file, you must use the escape character (`\`) for Windows paths directory separator (`\`). For example, if the Fonts folder to be mentioned is `C:\Windows\Fonts`, in the Configuration Manager CLI script, you should enter it as `C:\\Windows\\Fonts`.

**NOTE:** The following modules depend on ALC-LFS-ContentRepository. If you are using the `cli_propertyFile_template.txt` as template then either remove the ALC-LFS-ContentRepository from `excludedSolutionComponents` list or add the following LFS in `excludedSolutionComponents` list:

- `ALC-LFS-ProcessManagement`
- `ALC-LFS-CorrespondenceManagement`
- `ALC-LFS-ContentRepository`
- `ALC-LFS-MobileForms`
- `ALC-LFS_FormsManager`

## 9.3. Upgrading AEM Forms on JEE Commands

## (Turnkey and Partial Turnkey only) Migrate AEM Forms on JEE GDS

There is no direct command to migrate LiveCycle GDS to AEM Forms on JEE GDS. You have to manually migrate the content from LiveCycle machine to AEM Forms on JEE machine.

### Update AEM Forms on JEE core settings command

The `upgrade-configureCoreSettings` command updates various core settings for AEM Forms on JEE. For example, if in your previous LiveCycle system you had the Global Document Storage (GDS) directory set at `C:\LC\GDS` and in AEM Forms on JEE you plan to set it to `E:\DS\GDS`, then the new location is not updated in the database unless this CLI command is executed. Other core settings that can be updated in the same manner are: Adobe server fonts directory, Customer fonts directory, System fonts directory, Enable FIPS, AEM Forms on JEE temp directory, AEM Forms on JEE global document storage directory. The following properties are available for the `upgrade-configureCoreSettings` command.

Property	Description	Required	Can be empty
<code>prevLCVersion</code>	The version of AEM Forms on JEE from which upgrade is being performed. Valid values are 6.2 or 6.3 <b>NOTE:</b> Specify value 6.2 to upgrade from LiveCycle to AEM 6.4 Forms.	Yes	No
<code>excludedSolutionComponents</code>	Comma separated list of modules not being upgraded/installed. This is equivalent to deselecting installed/licensed solution components in the Configuration Manager GUI.	No	Yes

### Post-deployment Configuration command

The `upgrade-configurePostDeploy` command does the actual upgrade of the system and is run after AEM Forms on JEE EAR files and modules have been deployed.

The following properties are available for the `upgrade-configurePostDeploy` command:

Property	Description	Required	Can be empty
prevLCVersion	The version of AEM Forms on JEE from which upgrade is being performed. Valid values are 6.2 or 6.3 <b>NOTE:</b> Specify value 6.2 to upgrade from Live-Cycle to AEM 6.4 Forms.	Yes	No
excludedSolutionComponents	Comma separated list of AEM Forms on JEE components not being installed. This is equivalent to deselecting installed/licensed solution components in the GUI.	No	Yes

### AEM forms on JEE Host and Authorization information

Property	Description	Required	Can be empty
LCHost	Hostname of the AEM Forms on JEE Server.	Yes	No
LCPort	Port number on which AEM Forms on JEE application server is configured.	Yes	No
localServer.appServerRootDir	This is used to access appserver client JAR files. (Local application server root directory required for WebLogic and WebSphere only)	Yes	Yes
LCAdminUserID	Username of AEM Forms on JEE administrator user	Yes	No
LCAdminPassword	Password for administrator user. If you don't provide a password in the file, you will be prompted to provide it on command line	No	Yes

**AEM forms on JEE Database information**

Property	Description	Required	Can be empty
lcDatabaseType	Type of database configured for AEM Forms on JEE. Values can be <code>mysql</code> , <code>db2</code> , <code>oracle</code> , or <code>sqlserver</code>	Yes	No
lcDatabaseHostName	Hostname for the AEM Forms on JEE database.	Yes	No
lcDatabasePortNumber	The port number for the AEM Forms on JEE database.	Yes	No
lcDatabaseDriverFile	Path to driver file for the AEM Forms on JEE database.	Yes	No
lcDatabaseUserName	Username for accessing the AEM Forms on JEE database.	Yes	No
lcDatabaseName	AEM forms on JEE database name. Default is <code>adobe</code> .	Yes	No
lcDatabaseUserPassword	Password for accessing database. If you don't provide a password in the file, you will be prompted to provide it on command line	No	Yes

## 9.4. General configuration properties

### Common properties

Common properties are:

**AEM Forms on JEE Server specific properties:** Required for the Initialize AEM Forms on JEE and Deploy AEM Forms on JEE Components operations.

These properties are required for the following operations:

- Initialize AEM Forms on JEE
- Deploy AEM Forms on JEE components.

Property	Values	Description
<i>AEM Forms on JEE Server specific properties</i>		

Property	Values	Description
LCHost	String	The hostname of the server where AEM Forms on JEE will be deployed. For cluster deployments, hostname of any one of the cluster nodes where the application server is running.
LCPort	Integer	The web port number where AEM Forms on JEE will be deployed.
excludedSolutionComponents	String. Values include: ALC-LFS-Forms, ALC-LFS-ConnectorEMCDocumentum, ALC-LFS-ConnectorIBMFileNet, ALC-LFS-ConnectorIBMContent Manager, ALC-LFS-DigitalSignatures, ALC-LFS-DataCapture, ALC-LFS-Output, ALC-LFS-PDFGenerator, ALC-LFS-ProcessManagement, ALC-LFS-ReaderExtensions, ALC-LFS-RightsManagement ALC-LFS-CorrespondenceManagement, ALC-LFS-ContentRepository, ALC-LFS-MobileForms, ALC-LFS_FormsManager	(Optional) List the AEM Forms on JEE modules you do not want to configure. Specify the excluded modules in a comma separated list.
CRX Content repository The following properties are specified in the <code>cli_propertyFile_crx_template.txt</code> file.	true: false:	
contentRepository.rootDir		Path of the CRX repository.
is.new.installation.of.crx.repository	true: to create a new repository false: to upgrade an existing repository	If the content repository did not exist before upgrade and you have installed the Content Repository for the very first time then set the value to true.

Property	Values	Description
use.crx3.mongo	true: false:	If you have performed a fresh installation, to use Mongo DB with CRX3 set value to true. If the value is false CRX3 TAR is configured.
mongo.db.uri	<URI of Mongo DB>	If you are using Mongo DB, set URI of Mongo DB
mongo.db.name	<name of Mongo DB>	If you are using Mongo DB, provide name of Mongo DB instance
use.crx3.rdb.mk	true: false:	When the value of this property is true, the CRX repository is configured with RDB MK. The default value is false where the repository is configured as CRX3 TAR.

### Configure AEM Forms on JEE properties

These properties only apply to the configure AEM Forms on JEE operation.

Property	Values	Description
AdobeFontsDir	String	Location of the Adobe server fonts directory. This path must be accessible from the server being deployed to. This path must be accessible from all cluster nodes being deployed to.
customerFontsDir	String	Location of the customer fonts directory. This path must be accessible from the server being deployed to. This path must be accessible from all cluster nodes being deployed to.



Property	Values	Description
systemFontsDir	String	Location of the system fonts directory. This path must be accessible from the server being deployed to. This path must be accessible from all cluster nodes being deployed to.
LCTempDir	String	Location of the temporary directory. This path must be accessible from the server being deployed to. This path must be accessible from all cluster nodes being deployed to.
LCGlobalDocStorageDir	String	The global document storage root directory. Specify a path to an NFS shared directory used to store long-lived documents and to share them among all cluster nodes. This path must be accessible from the server being deployed to. This path must be accessible from all cluster nodes being deployed to.
EnableDocumentDBStorage	true or false Default: false	Enables or disables document storage in database for persistent documents. Even if you enable document storage in database, you will need the file system directory for GDS.

### Configure or validate application server properties

## Initialize AEM Forms on JEE properties

These initialize AEM Forms on JEE properties only apply to the initialize AEM Forms on JEE operation.

Property	Values	Description
<i>For more information, see <a href="#">Common properties</a>.</i>		

## Deploy AEM Forms on JEE Components properties

These properties apply to the following operations:

- Deploy AEM Forms on JEE Components
- Validate AEM Forms on JEE Component Deployment
- Validate AEM Forms on JEE Server.

Property	Values	Description
<i>You must configure the AEM Forms on JEE Server Information section. For more information, see <a href="#">Common properties</a></i>		
LCAdminUserID	String	The user ID to assign to the AEM Forms on JEE Administrator user. This User ID is used to login to the Administrator Console.
LCAdminPassword	String	The password to assign to the AEM Forms on JEE Administrator user. This password is used to login to the Administrator Console.

## Add administrator user for PDF Generator

These properties apply only to the adding administrator user for PDF Generator operation. These properties are present in cli\_propertyFile\_pdfg\_template.txt

Property	Values	Description
LCHost	String	Hostname where AEM Forms on JEE Server is installed.
LCPort	Integer	Port number where AEM Forms on JEE application server is configured

Property	Values	Description
LCAdminUserID	String	The user ID to assign to the AEM Forms on JEE Administrator user. This User ID is used to login to the Administrator Console.
LCAdminPassword	String	The password to assign to the AEM Forms on JEE Administrator user. This password is used to login to the Administrator Console.
LCServerMachineAdminUser	String	The user ID of the Administrator user of the Operation System hosting AEM forms on JEE
LCServerMachineAdminUserPassword	String	The password of the Administrator user of the Operation System hosting AEM forms on JEE

### Configure Connector for IBM Content Manager

**NOTE:** The following properties are specified in the cli\_propertyFile\_ecm\_ibmcm\_template.txt file.

Property	Values	Description
LCHost	String	Hostname where AEM Forms on JEE Server is installed.
LCPort	Integer	Port number where AEM Forms on JEE application server is configured
LCAdminUserID	String	The user ID to assign to the AEM Forms on JEE Administrator user. This User ID is used to login to the Administrator Console.
LCAdminPassword	String	The password to assign to the AEM Forms on JEE Administrator user. This password is used to login to the Administrator Console.

Property	Values	Description
CDVTopology.appserverrootdir	String	The root directory of the application server instance that you are configuring on a remote server (on which you plan to deploy AEM Forms on JEE)
ConfigureIBMCM	true or false	Specify true to configure Connector for IBM Content Manager
IBMCMClientPathDirectory	String	Location of IBM Content Manager client installation directory.
DataStoreName	String	Name of the DataStore of IBM Content Manager Server that you want to connect to
IBMCMUsername	String	The user name assign to the IBM Content Manager Administrator user. This User ID is used to login to the IBM Content Manager.
IBMCMPassword	String	The password to assign to the IBM Content Manager Administrator user. This password is used to login to the IBM Content Manager.
ConnectionString	String	Additional arguments used in the connection string to connect to IBM Content Manager(Optional).

## Configure Connector for IBM FileNet

**NOTE:** The following properties are specified in the cli\_propertyFile\_ecm\_filenet\_template.txt file.

Property	Values	Description
LCHost	String	Host name of the machine where AEM Forms on JEE Server is installed.

Property	Values	Description
LCPort	Integer	Port number where AEM Forms on JEE application server is configured
LCAdminUserID	String	The user ID to assign to the AEM Forms on JEE Administrator user. This User ID is used to login to the Administrator Console.
LCAdminPassword	String	The password to assign to the AEM Forms on JEE Administrator user. This password is used to login to the Administrator Console.
CDVTopology.appserverrootdir	String	The root directory of the application server instance that you are configuring on a remote server (on which you plan to deploy AEM Forms on JEE)
ConfigureFilenetCE	true or false	Specify true to configure Connector for IBM Filenet
FilenetConfigureCEVersion	String	The FileNet client version to configure. Specify FilenetClientVersion5.0 or FilenetClientVersion5.2
FilenetCEClientPathDirectory	String	Location of IBM Filenet Content Manager client installation directory.
ContentEngineName	String	Host name or IP address of the machine where IBM Filenet Content Engine is installed
ContentEnginePort	String	The port number used by IBM Filenet Content Engine
CredentialProtectionSchema	CLEAR or SYMMETRIC	Specify the level of protection.

Property	Values	Description
EncryptionFileLocation	String	Location of the encryption file. This is required only when you select SYMMETRIC option for CredentialProtectionSchema attribute. Use a forward slash (/) or double backward slashes (\\) as a path separator.
DefaultObjectStore	String	Name of the ObjectStore for the Connector for IBM FileNet Content Server.
FileNetContentEngineUsername	String	The user ID to connect to the IBM FileNet Content server. The user ID with read-access privileges would be allowed to connect to the Default object Store.
FileNetContentEnginePassword	String	The password to assigned to the IBM FileNet user. This password is used to connect to Default object Store.
ConfigureFileNetPE	true or false	Specify true to configure Connector for IBM FileNet
FileNetPEClientPathDirectory	String	Location of IBM FileNet client installation directory
FileNetProcessEngineHostName	String	Host name or IP address of the process router.
FileNetProcessEnginePortNumber	Integer	Port number for IBM FileNet Content Server
FileNetPERouterURLConnectionPoint	String	Name of the process router.
FileNetProcessEngineUsername	String	The user ID to connect to the IBM FileNet Content Server
FileNetProcessEnginePassword	String	The password to connect to the IBM FileNet Content Server

## Configure Connector for EMC Documentum

**NOTE:** The following properties are specified in the cli\_propertyFile\_ecm\_documentum\_template.txt file.

Property	Values	Description
LCHost	String	Host name where AEM Forms on JEE Server is installed.
LCPort	Integer	Port number where AEM Forms on JEE application server is configured
LCAdminUserID	String	The user ID to assign to the AEM Forms on JEE Administrator user. This User ID is used to login to the Administrator Console.
LCAdminPassword	String	The password to assign to the AEM Forms on JEE Administrator user. This password is used to login to the Administrator Console.
CDVTopology.appserverrootdir	String	The root directory of the application server instance that you are configuring on a remote server (on which you plan to deploy AEM Forms on JEE)
ConfigureDocumentum	true or false	Specify true to configure Connector for EMC Documentum
DocumentumClientVersion	String	The EMC Documentum client version to configure. Specify DocumentumClientVersion
DocumentumClientPathDirectory	String	Location of EMC Documentum client installation directory
ConnectionBrokerHostName	String	Host name or IP address of the EMC Documentum Content Server.
ConnectionBrokerPortNumber	String	Port number for EMC Documentum Content Server

Property	Values	Description
DocumentumUsername	String	The user ID to connect to the EMC Documentum Content Server.
DocumentumPassword	String	The password ID to connect to the EMC Documentum Content Server.
DocumentumDefaultRepositoryName	String	Name of the default repository of MC Documentum Content Server

### Configure Connector for Microsoft SharePoint

**NOTE:** The following properties are specified in the cli\_propertyFile\_ecm\_sharepoint\_template.txt file.

Property	Values	Description
LCHost	String	Host name where AEM Forms on JEE Server is installed.
LCPort	Integer	Port number where AEM Forms on JEE application server is configured
LCAdminUserID	String	The user ID to assign to the AEM Forms on JEE Administrator user. This User ID is used to login to the Administrator Console.
LCAdminPassword	String	The password to assign to the AEM Forms on JEE Administrator user. This password is used to login to the Administrator Console.
CDVTopology.appserverrootdir	String	The root directory of the application server instance that you are configuring on a remote server (on which you plan to deploy AEM Forms on JEE)
ConfigureSharePoint	true or false	Specify true to configure Connector for Microsoft SharePoint



Property	Values	Description
SharePointServerAddress	String	Host name or IP address of the Sharepoint Server
SharePointUsername	String	The user ID to connect to the Sharepoint Server
SharePointPassword	String	The password to connect to the Sharepoint Server
SharePointDomain	String	The Domain Name of the Sharepoint Server
ConnectionString	String	Additional arguments used in the connection string to connect to the Sharepoint Server(optional

## Command Line Interface Usage

Once you have configured your property file, you must navigate to the *[AEM Forms on JEE root]/configurationManager/bin* folder.

To view a complete description of the Configuration Manager CLI commands, type:

```
ConfigurationManagerCLI help <command name>.
```

### Configure CRX CLI Usage

The Configure CRX Repository requires the following syntax:

```
configureCRXRepository -f <propertyFile>
```

### Initialize AEM Forms on JEE CLI Usage

The initialize AEM Forms on JEE operation requires the following syntax:

```
initializeLiveCycle -f <propertyFile>
```

### Validate AEM Forms on JEE Server CLI Usage

The Validate AEM Forms on JEE Server operation is optional and requires the following syntax:

```
validateLiveCycleServer -f <propertyFile> -LCAdminPassword <password>
```

Where:

- `-LCAdminPassword <password>`: Allows you to set the Admin password on the command line. If this argument is present, it will override the `targetServer.adminPassword` property in the property file.

## Deploy AEM Forms on JEE Components CLI Usage

The Deploy AEM Forms on JEE Components operation requires the following syntax:

```
deployLiveCycleComponents -f <propertyFile> -LCAdminPassword <password>
```

## Validate AEM Forms on JEE Component Deployment CLI Usage

The Validate AEM Forms on JEE Component Deployment operation is optional and requires the following syntax:

```
validateLiveCycleComponentDeployment -f <propertyFile> -LCAdminPassword <password>
```

## Check system readiness for PDF Generator

The Checking system readiness for PDF Generator operation requires the following syntax:

```
pdfg-checkSystemReadiness
```

## Adding administrator user for PDF Generator

The adding administrator user for PDF Generator operation requires the following syntax:

```
pdfg-addAdminUser -f <propertyFile>
```

Where:

- `-f <propertyFile>`: A property file containing the required arguments. For more information on creating a property file, see [Command Line Interface property file](#).

## Configure Connector for IBM Content Manager

The Configure Connector for IBM Content Manager operation is optional and requires the following syntax:

```
IBMCM-configurationCLI -f <propertyFile>
```

**IMPORTANT:** Modify the <propertyFile> called `cli_propertyFile_ecm_ibmcm_template.txt` located in the `[aem-forms root]\configurationManager\bin\` directory.

- 1) Restart the Application Server.
- 2) Start the following services from administration console
  - IBMCMAuthProviderService
  - IBMCMConnectorService

## Configure Connector for IBM FileNet

The Configure Connector for IBM FileNet operation is optional and requires the following syntax:

```
filenet-configurationCLI -f <propertyFile>
```

**IMPORTANT:** Modify the <propertyFile> called `cli_propertyFile_ecm_filenet_template.txt` located in the `[aem-forms root]\configurationManager\bin\` directory.

Perform the following steps manually to complete the configuration for Connector for IBM Content Manager.

- 1) Restart the Application Server.
- 2) Start the following services from administration console
  - IBMFileNetAuthProviderService
  - IBMFileNetContentRepositoryConnector
  - IBMFileNetRepositoryProvider
  - IBMFileNetProcessEngineConnector(If configured)

### Configure Connector for EMC Documentum

The Configure Connector for EMC Documentum operation is optional and requires the following syntax:

```
documentum-configurationCLI -f <propertyFile>
```

**IMPORTANT:** Modify the <propertyFile> called `cli_propertyFile_ecm_documentum_template.txt` located in the `[aem-forms root]\configurationManager\bin\` directory.

Perform the following steps manually to complete the configuration for Connector for EMC Documentum.

- 1) Restart the Application Server.
- 2) Start the following services from administration console
  - EMCDocumentumAuthProviderService
  - EMCDocumentumRepositoryProvider
  - EMCDocumentumContentRepositoryConnector

### Configure Connector for Microsoft SharePoint

The Configure Connector for Microsoft SharePoint operation is optional and requires the following syntax:

```
sharepoint-configurationCLI -f <propertyFile>
```

Where:

**IMPORTANT:** Modify the <propertyFile> called `cli_propertyFile_ecm_sharepoint_template.txt` located in the `[aem-forms root]\configurationManager\bin\` directory.

## 9.5. Examples Usage

From the `C:\Adobe\Adobe_Experience_Manager_Forms\configurationManager\bin`, type:

```
ConfigurationManagerCLI configureLiveCycle -f cli_propertyFile.txt
```

Where `cli_propertyFile.txt` is the name of the property file you created.

## 9.6. Configuration Manager CLI Logs

If an error occurs, you can review the CLI logs located here in the *[aem-forms root]\configurationManager\log* folder. The log file generated will have a naming convention such as *lcmCLI.0.log* where the number in the filename (0) will increment when the log files are rolled over.

## 9.7. Next steps

If you used Configuration Manager CLI to configure and deploy AEM Forms on JEE, then do the following tasks now:

- Upgrade the CRX repository and migrate the content
- Perform post deployment configurations

# 10. Appendix - Configuring the Connector for Microsoft SharePoint on the SharePoint Server

The Connector for Microsoft SharePoint allows you to integrate workflows from both the AEM Forms on JEE and the SharePoint development perspectives. This module includes a AEM Forms on JEE service and a sample SharePoint feature that facilitates end-to-end connection between the two systems.

The service provides search, read, write, delete, update, and check in/out capabilities with a SharePoint repository. SharePoint users can initiate AEM Forms on JEE processes such as an approval process from within SharePoint, convert documents to Adobe PDF, and manage the rights on a file in PDF or native formats. In addition, from within the SharePoint context, you can automate running AEM Forms on JEE processes from within SharePoint workflows.

## 10.1. Installation and configuration

After you configured the AEM Forms on JEE installation, carry out the following steps to configure the connector on the SharePoint server.

### System requirements for the SharePoint server

Ensure that your server that runs the SharePoint site meets the following requirements:

- Microsoft SharePoint Server
- Microsoft .NET Framework 3.5

### Installation considerations

Keep in mind the following, before you plan your installation:

- Before you run the installation, ensure that no other sites or web applications are using services on the IIS Server. Consult with your IIS Administrator before you proceed with the installation.
- (For Sharepoint server Farmed installation) The SharePoint administration service is running on the central administration server of the SharePoint server Farm. (For SharePoint server standalone installation) The SharePoint administration service is stopped on the SharePoint server.

## 10.2. Installation and configuration on the SharePoint server

## Edit Environment Variables

Append path of stsadm.exe to PATH environment variable. The default path of stsadm.exe is  
C:\Program Files\Common Files\MicrosoftShared\Web Server  
Extensions\14\BIN.

## Extract the web part installer

When you installed the AEM Forms on JEE server, the web part installer for SharePoint server files named `Adobe Connector-2013.zip` and `Adobe Connector-2016.zip` are created in the `[aem-forms root]\plugins\sharepoint` folder.

- If you are using Microsoft SharePoint 2013, copy file `Adobe Connector-2013.zip` to a folder on the Windows server that hosts SharePoint, and then extract the copied file.
- If you are using Microsoft SharePoint 2016, copy file `Adobe Connector-2016.zip` to a folder on the Windows server that hosts SharePoint, and then extract the copied file.

## Install and Activate the Connector

- 1) (Optional) Select options for SharePoint Server Context menu before installing connector. See [Enable/Disable features](#) for detailed steps.
- 2) Run following commands in the listed order to install the Connector for SharePoint Server. Ensure that you run `stsadm -o enumsolutions` after each command to verify that the changes have been the propagated to all the servers.

*Run `stsadm -o enumsolutions` repeatedly, until the resultant xml contains `<state>pending</state>` tag.*

```
install.bat -create
install.bat -add
install.bat -deploy
install.bat -install
```

**NOTE:** For the `install.bat -deploy` command, run `stsadm -o enumsolutions` repeatedly, until the resultant xml contains `<LastOperationResult>DeploymentSucceeded</LastOperationResult>` tag.

- 3) Activate the connector from SharePoint Web Application. To activate the connector:
  - a) Open SharePoint Web Application in a browser.
  - b) Click **Site Settings**.
  - c) Click **Site Collection Features**.
  - d) Click Activate for **Adobe Connector** and **Workflow** feature.

## Enable/Disable features

You can change options of context menu and disable other features on SharePoint Sites. For the Sharepoint Connector installed with default set of options, following options are enabled on SharePoint Server:

- Convert to Adobe PDF

- Enable for commenting by adobe reader.
- Secure with Adobe Policy.
- Invoke AEM Forms on JEE Processes

You may make changes to `Elements.xml` file to change above options and to enable or disable another features. To make changes to `Elements.xml`

- 1) Navigate to the folder containing extracted contents of `Adobe Connector-2013.zip` or `Adobe Connector-2016.zip` file.
- 2) Take backup of `Elements.xml` file. The default location of `Elements.xml` is `< Directory containing Extracted Adobe Connector-2013/2016.zip File >\TEMPLATE\FEATURES\LiveCycle\Elements.xml`
- 3) Open the `Elements.xml` file in a text editor.
- 4) Delete or comment the `CustomAction` elements of features that you want to disable .

Docuent Server feature	CustomAction element ID	Description
ReaderExtensions	LiveCycle.ApplyReaderExtensions	Enables Acrobat Reader DC extensions on PDF documents.
Rights Management	LiveCycle.RightsManagement.ApplyPolicyToPdf	Rights-protect PDF documents
	LiveCycle.RightsManagement.ApplyPolicyToDoc	Rights-protect Microsoft Word documents
	LiveCycle.RightsManagement.ApplyPolicyToXls	Rights-protect Microsoft Excel documents
	LiveCycle.RightsManagement.ApplyPolicyToPpt	Rights-protect Microsoft PowerPoint documents
	LiveCycle.RightsManagement.ApplyPolicyToDocx	Rights-protect Microsoft Word documents
	LiveCycle.RightsManagement.ApplyPolicyToXlsx	Rights-protect Microsoft Excel documents
	LiveCycle.RightsManagement.ApplyPolicyToPptx	Rights-protect Microsoft PowerPoint documents
	LiveCycle.RightsManagement.ApplyPolicyToDwg	Rights-protect Microsoft Excel documents
	LiveCycle.RightsManagement.ApplyPolicyToDxf	Rights-protect AutoCAD documents
	LiveCycle.RightsManagement.ApplyPolicyToDwf	Rights-protect AutoCAD documents

PDF Generator	LiveCycle.GeneratePDFFromPdf	Convert a PDF created from an image to a text-based PDF if Standard OCR was used? as the file type in Site Settings.
	LiveCycle.GeneratePDFFromDoc	Generate PDF from Microsoft Word documents
	LiveCycle.GeneratePDFFromPs	Generate PDF from PostScript files
	LiveCycle.GeneratePDFFromEps	Generate PDF from EPS documents
	LiveCycle.GeneratePDFFromPrn	Generate PDF from PRN files
	LiveCycle.GeneratePDFFromDocx	Generate PDF from Microsoft Word 2007 documents
	LiveCycle.GeneratePDFFromPpt	Generate PDF from Microsoft PowerPoint documents
	LiveCycle.GeneratePDFFromPptx	Generate PDF from Microsoft PowerPoint documents
	LiveCycle.GeneratePDFFromXls	Generate PDF from Microsoft Excel documents
	LiveCycle.GeneratePDFFromXlsx	Generate PDF from Microsoft Excel documents
	LiveCycle.GeneratePDFFromBmp	Generate PDF from BMP files
	LiveCycle.GeneratePDFFromGif	Generate PDF from GIF files
	LiveCycle.GeneratePDFFromJpeg	Generate PDF from JPEG images
	LiveCycle.GeneratePDFFromJpg	Generate PDF from JPG images
	LiveCycle.GeneratePDFFromTiff	Generate PDF from TIFF images
	LiveCycle.GeneratePDFFromTif	Generate PDF from TIF images
	LiveCycle.GeneratePDFFromPng	Generate PDF from PNG images
	LiveCycle.GeneratePDFFromJpf	Generate PDF from JPF images
	LiveCycle.GeneratePDFFromJpx	Generate PDF from JPX images
	LiveCycle.GeneratePDFFromJp2	Generate PDF from JPEG 2000 images
	LiveCycle.GeneratePDFFromJ2k	Generate PDF from JPEG 2000 images
	LiveCycle.GeneratePDFFromJ2c	Generate PDF from JPEG 2000 images
	LiveCycle.GeneratePDFFromJpc	Generate PDF from JPEG 2000 images



	LiveCycle.GeneratePDFFromHtm	Generate PDF from HTM documents
	LiveCycle.GeneratePDFFromHtml	Generate PDF from HTML documents
	(Deprecated) LiveCycle.GeneratePDFFromSwf	(Deprecated) Generate PDF from SWF files
	LiveCycle.GeneratePDFFromFlv	Generate PDF from Flash video files
	LiveCycle.GeneratePDFFromTxt	Generate PDF from text files
	LiveCycle.GeneratePDFFromRtf	Generate PDF from Rich Text Format files
	LiveCycle.GeneratePDFFromMpp	Generate PDF from Microsoft Project files
	LiveCycle.GeneratePDFFromPub	Generate PDF from Microsoft Publisher?documents
Invoke LiveCycle process	LiveCycle.InvokeGenericLiveCycleProcessOnALL	Invoke LiveCycle Process
Adobe Forms Library	AdobeFormsLibrary	Set up SharePoint as the repository for forms data.Remove the CustomAction, ListTemplate and ListInstance elements.
AEM Forms user Tasks	LiveCycleUserTasks	Lists the user tasks.Remove the ListTemplate element.
LiveCycle Group Tasks	LiveCycleGroupTasks	Lists the group tasks.Remove the ListTemplate element.

- 5) Save and close `Elements.xml`

## Uninstalling Connector for Microsoft SharePoint Server

- 1) Deactivate SharePoint Connector from Shrepoint Web Application. To deactivate SharePoint Connector
  - a) Open SharePoint Web Application in a browser.
  - b) Click **Site Settings**.
  - c) Click **Site Collection Features**.
  - d) Click Deactivate for **Adobe Connector** and **Adobe LiveCycle Workflow** Features.
- 2) On the command prompt, run the following commands in the given order. Ensure that you run `stsadm - o enumsolutions` after each command to verify that the changes have been the

propagated to all the servers. Run `stsadm - o enumsolutions` repeatedly, until the resultant xml contains `<state>pending</state>` tag.

```
Install.bat -uninstall
```

```
Install.bat -retract
```

```
Install.bat -delete
```

**NOTE:** For the `Install.bat -retract` command, run `stsadm - o enumsolutions` repeatedly, until the resultant xml contains `<LastOperationResult>RetractionSucceeded</LastOperationResult>` tag.