



DEVELOPERS LIVE

CIF Extensibility via GraphQL

Mark J. Becker | Software Engineer



About the Speaker



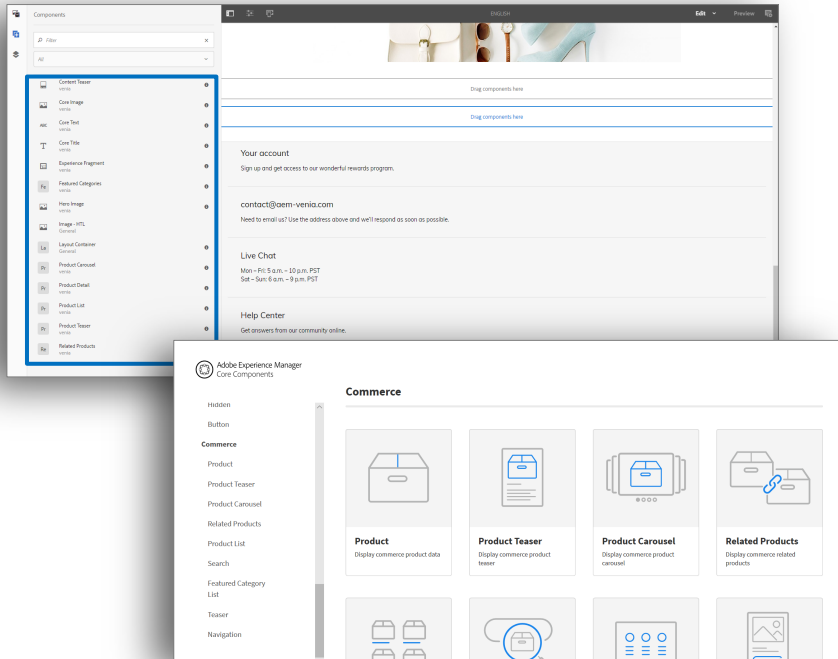
Mark J. Becker
Software Engineer

Adobe Basel

 @markjbecker



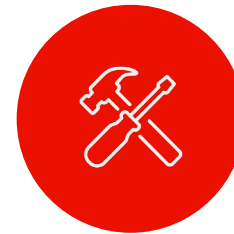
Commerce Core Components



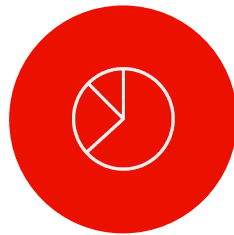
- Leverage CIF to integrate with Commerce and GraphQL
- Enrich website with commerce features: product & catalog browsing, cart & checkout, search
- Open-source:
<https://github.com/adobe/aem-core-cif-components>



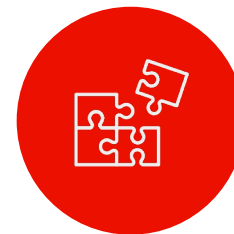
Themes &
Internationalization



Customizable &
Configurable

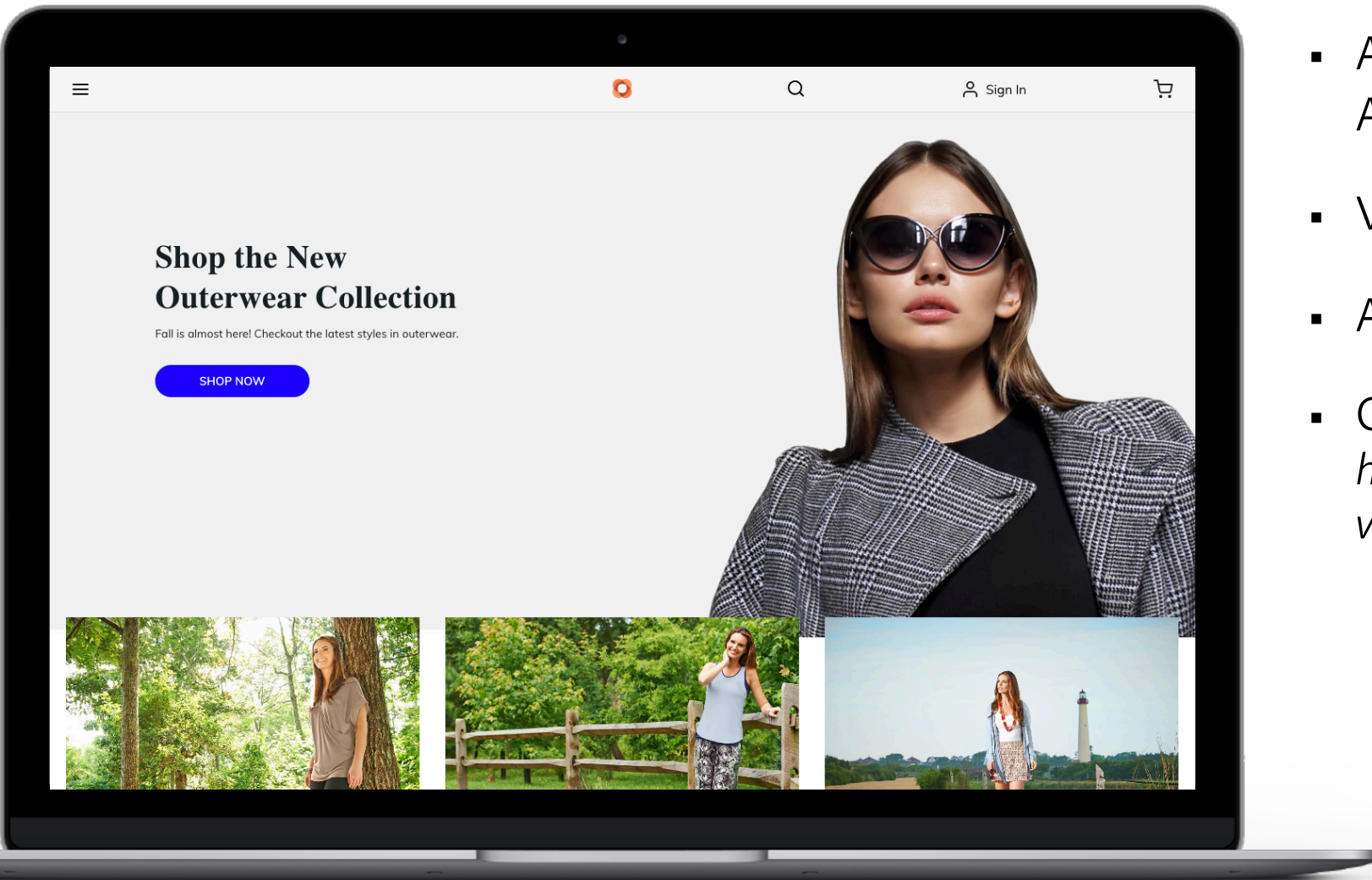


Trackable



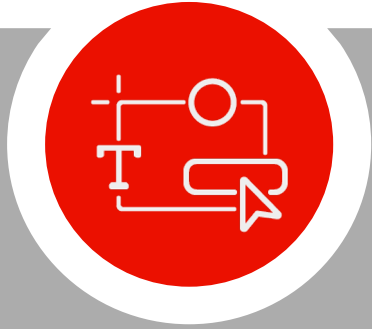
Server &
client-side

AEM Venia Reference Storefront



- Accelerate storefront development on AEM
- Visualize typical B2C experience
- Achieved with CIF Core Components
- Open-source:
<https://github.com/adobe/aem-cif-guides-venia>

Customization Patterns



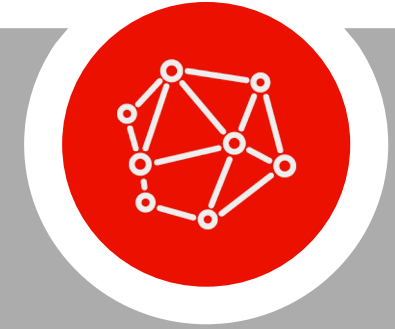
Use case 1:
Customize core
components

**Sling Model
Delegation**
with Retriever Pattern



Use case 2:
Write your own
component

GraphQL Client
for issuing queries



Use case 3:
Integrate with external
services

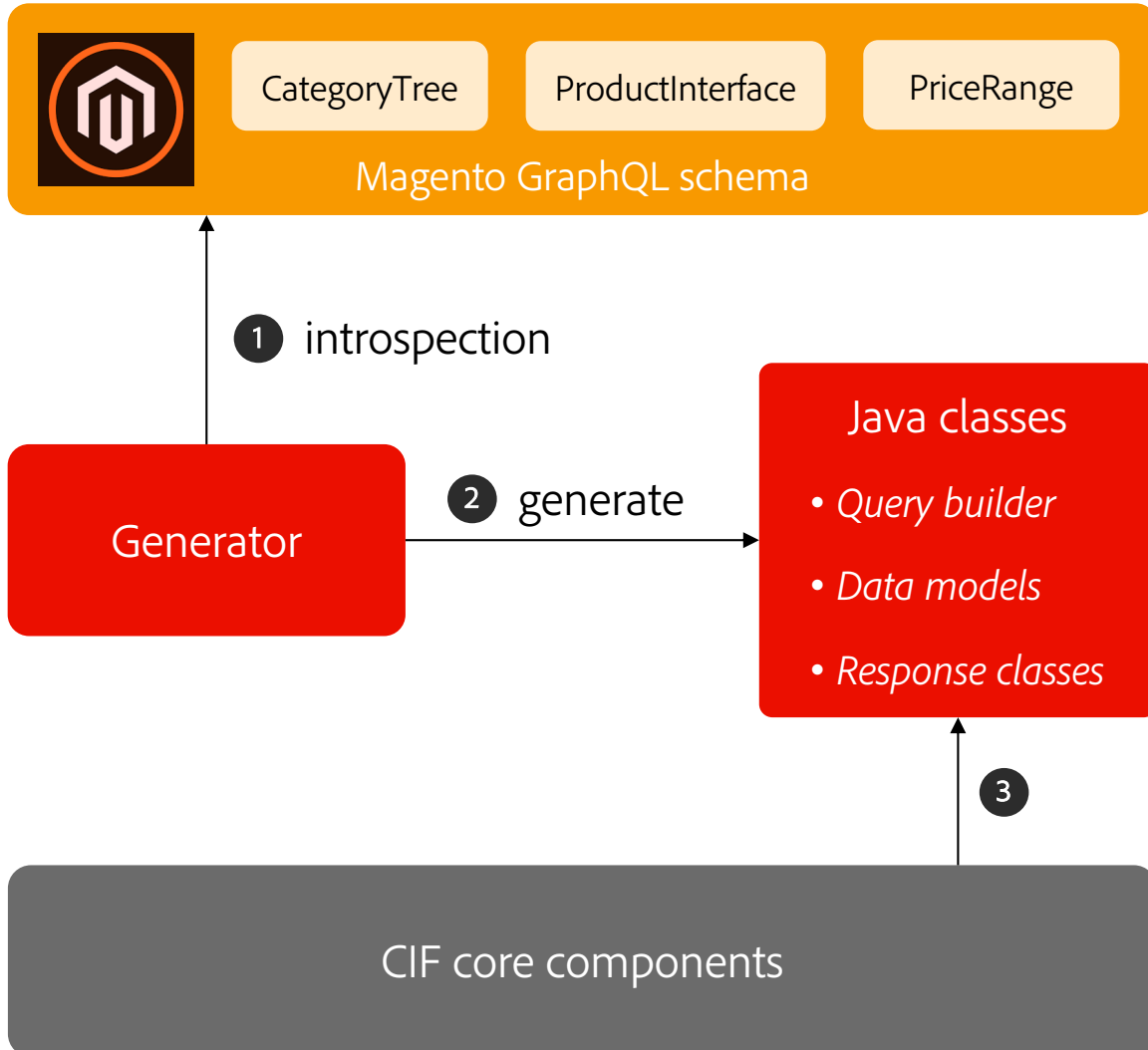
**GraphQL Integration
Layer**
to customize endpoint

Use Case 1

Sling Model Delegation



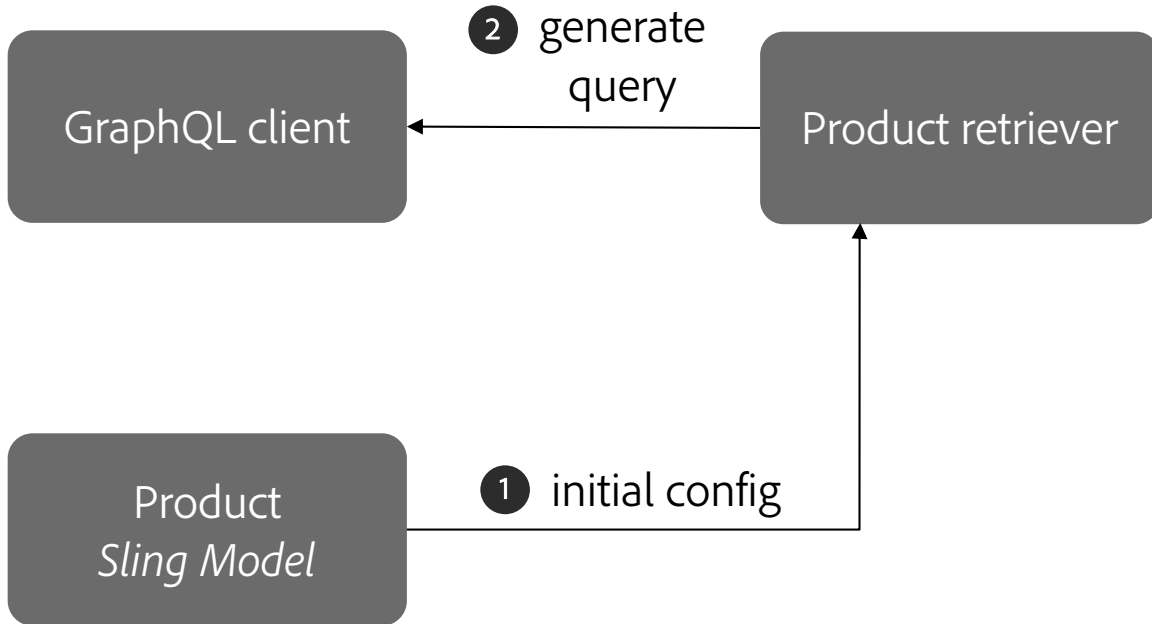
GraphQL Data Models



Example

```
(ProductInterfaceQuery q) -> q
  .name()
  .image(i -> i
    .url())
  .urlKey()
  .onConfigurableProduct(c -> c
    .variants(v -> v
      .product(s -> s
        .sku()
        .name()))));
```

Retriever Pattern

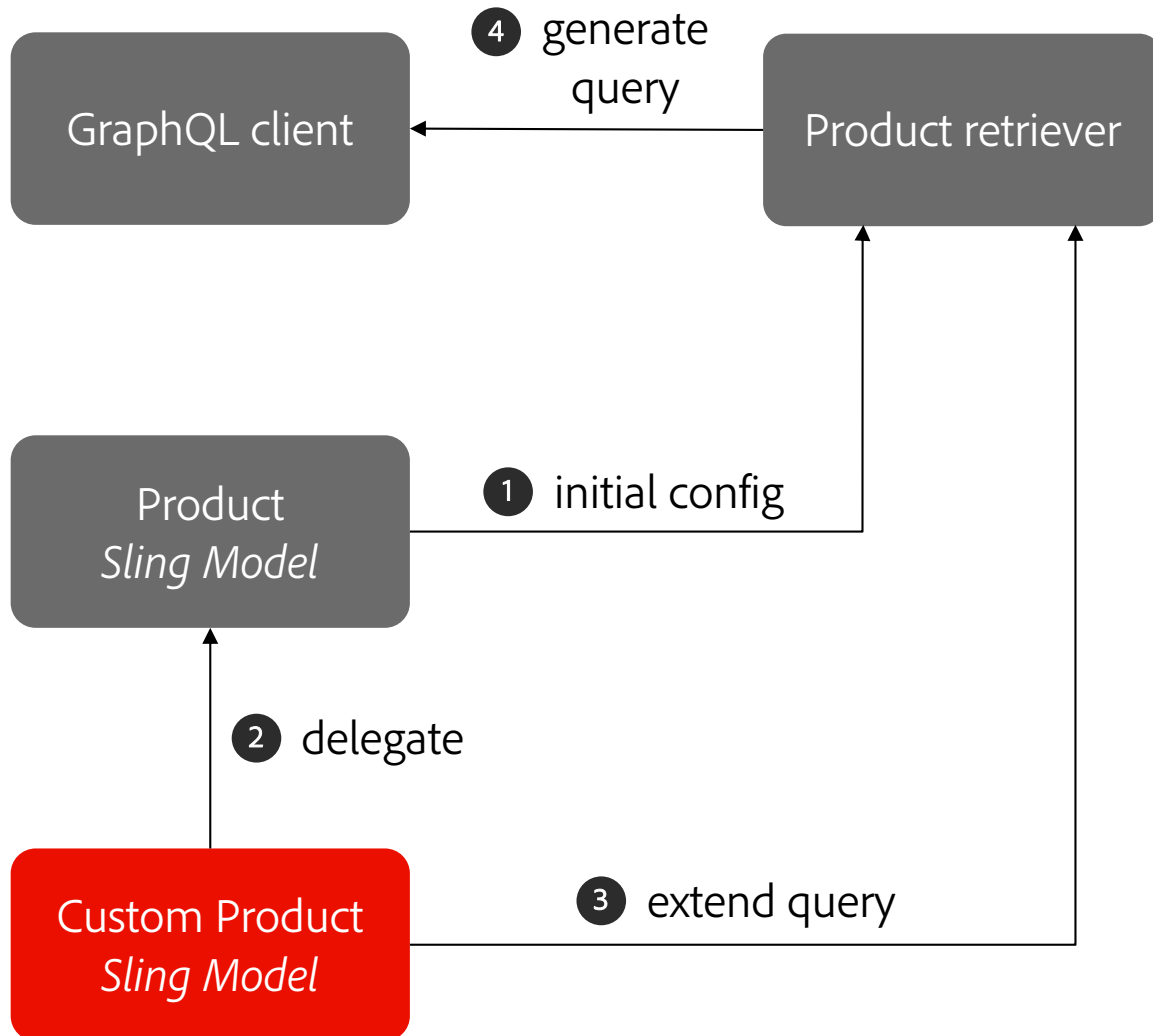


```
@PostConstruct
private void initModel() {
    1 retriever =
        new ProductRetriever(graphqlClient);

    retriever.setIdentifier(
        identifier.getLeft(),
        identifier.getRight());
}

public String getName() {
    2 return retriever
        .fetchProduct()
        .getName();
}
```


Retriever Pattern with Sling Model Delegation



```
@Self
2 @Via(type = ResourceSuperType.class)
  private Product product;

@PostConstruct
public void initModel() {
  3 product
    .getProductRetriever()
    .extendProductQueryWith(p ->
      p.countryOfManufacture()
    );
}

public String getCountryOfManufacture() {
  4 return retriever
    .fetchProduct()
    .getCountryOfManufacture();
}
```

Takeaway



Customize CIF Components

Example: Custom Product Attributes

Sling Model Delegation With Retriever Pattern

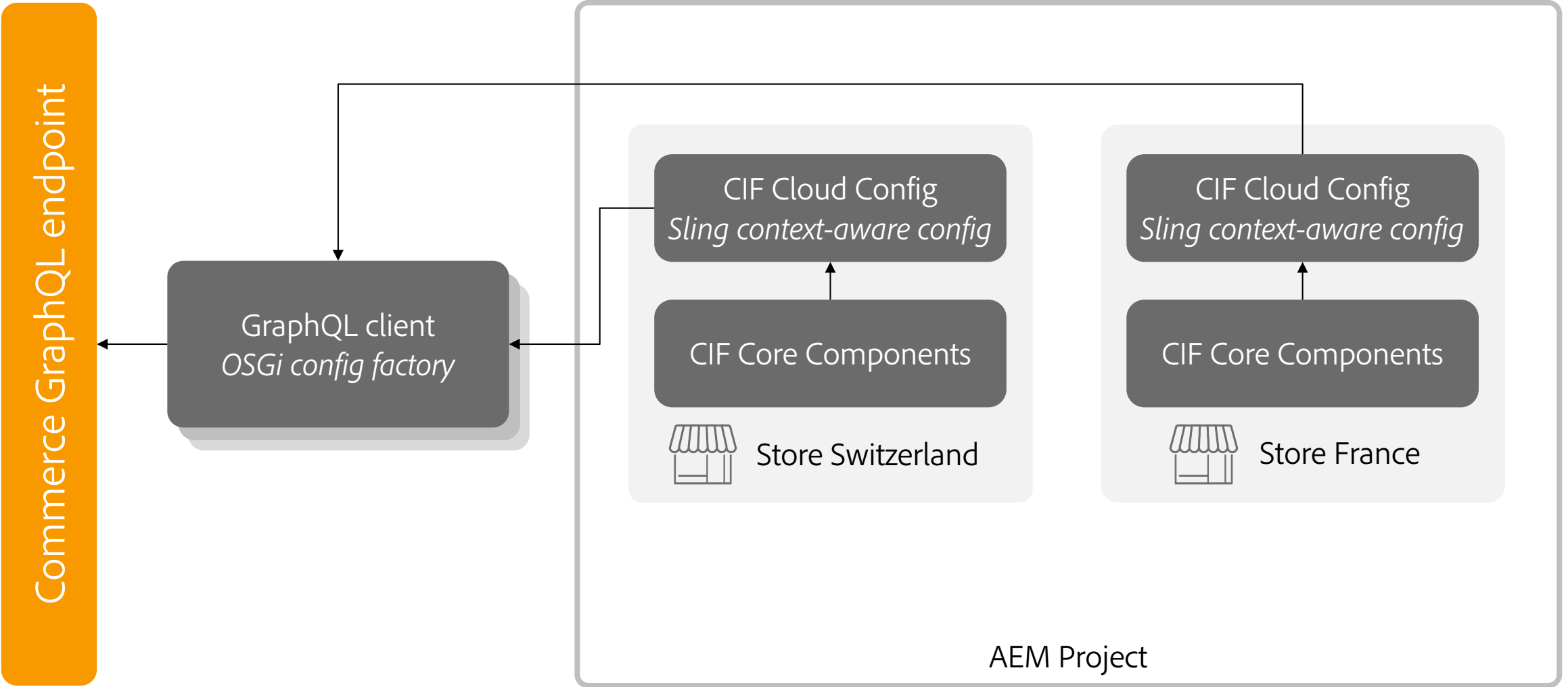
- Your implementation stays compatible to future versions of CIF Core Components.
- Retrievers available for many data types (products, categories, etc.).
- Query builders support custom fields:
 - `.addCustomSimpleField("myfield")`
- More details on Adobe Experience League:
 - <https://experienceleague.adobe.com/docs/experience-manager-cloud-service/commerce/customize/customize-cif-components.html>

Use Case 2

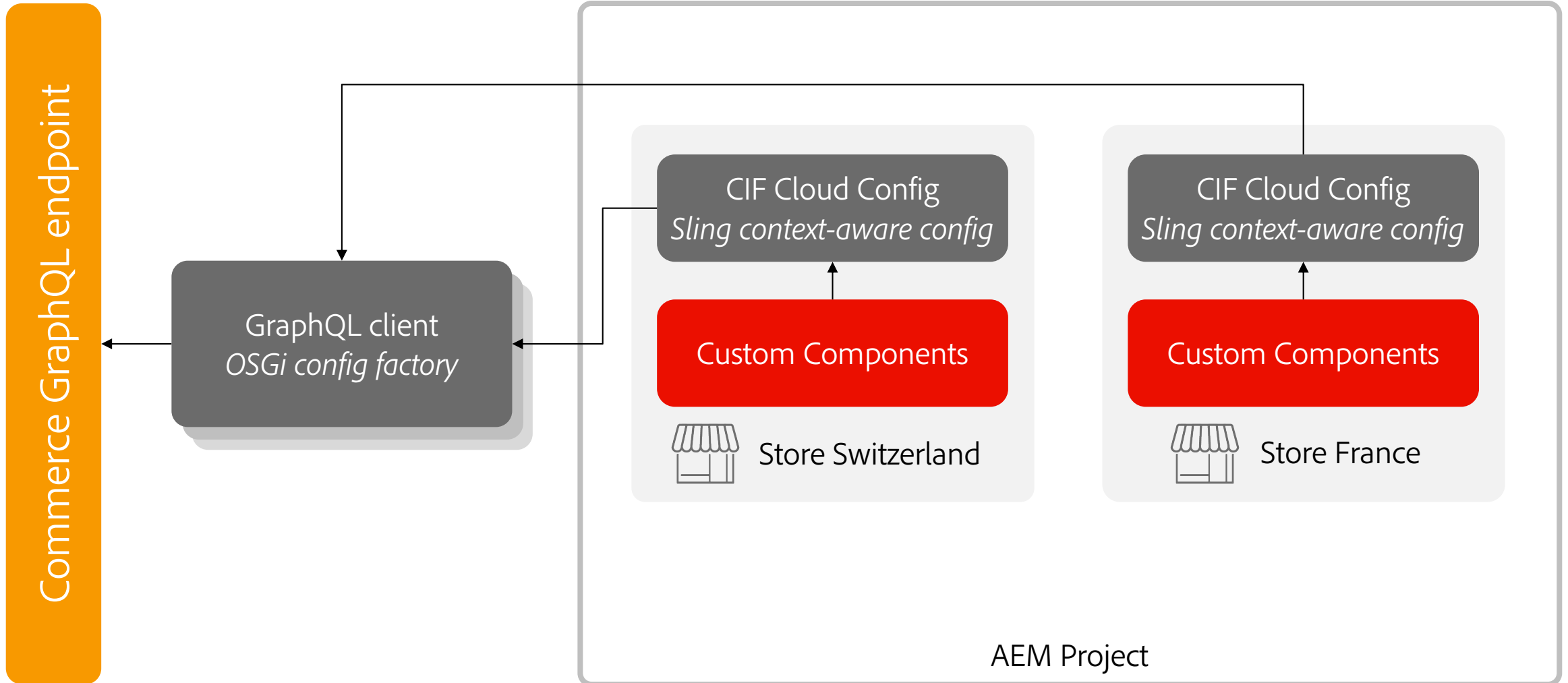
GraphQL Client



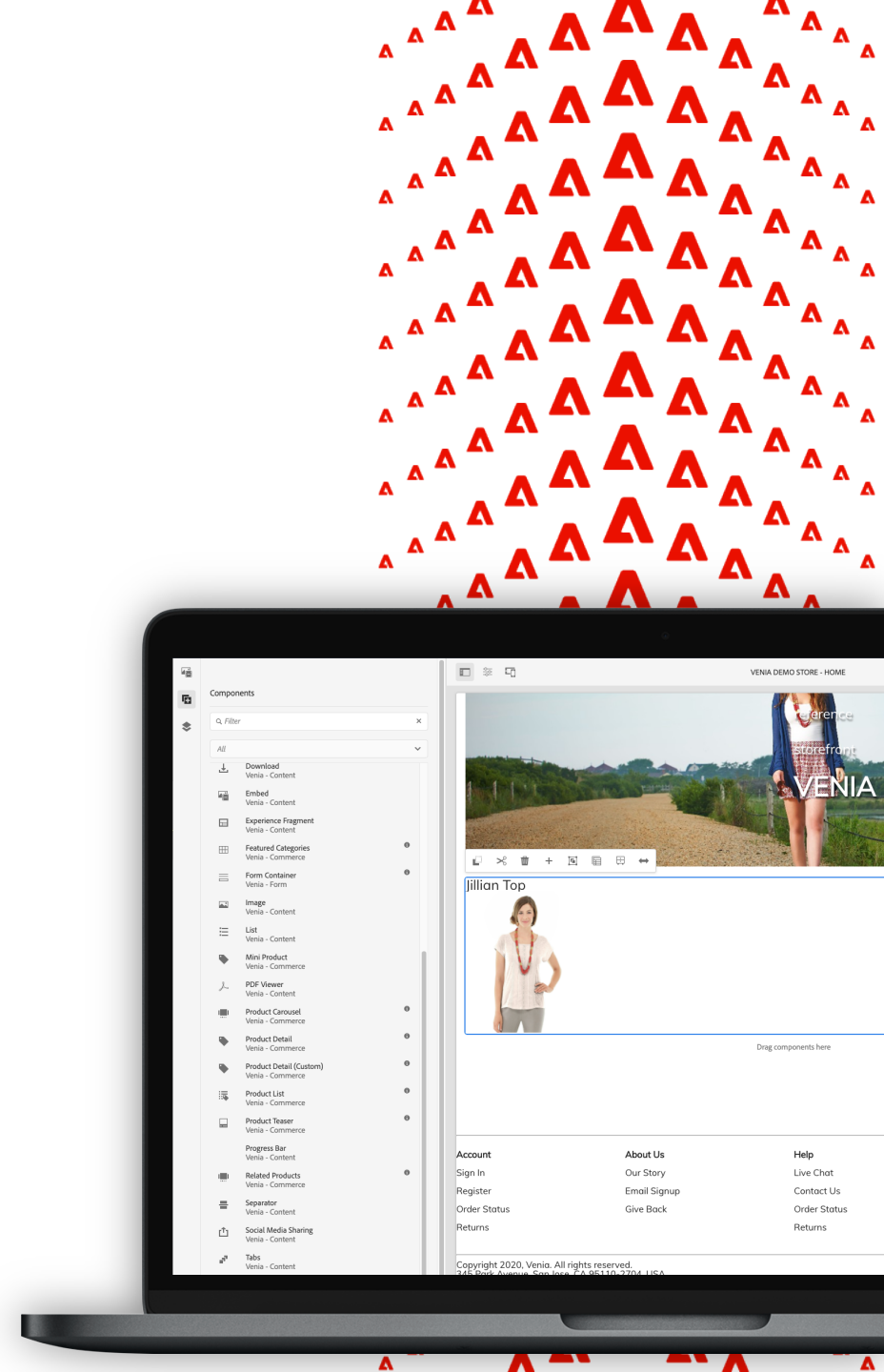
Integration with Commerce



Integration with Commerce



Demo



Takeaway



Custom Commerce Components

Example: B2B Components

CIF GraphQL Client

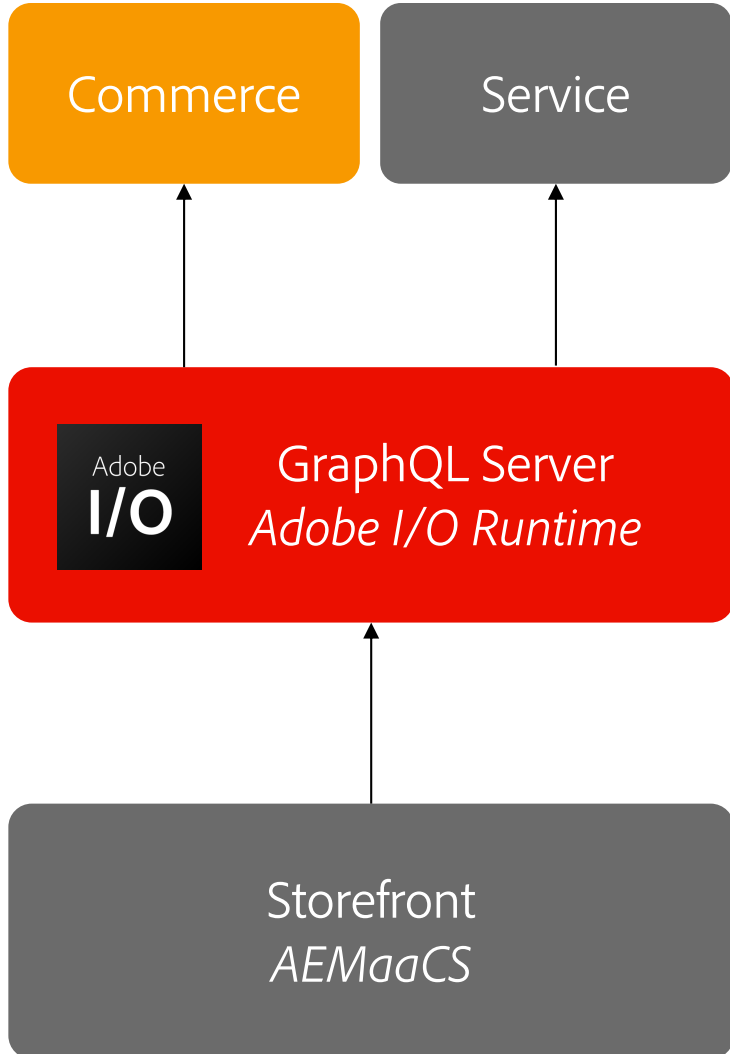
- Building components with a different feature set than what the CIF core components provide
- MagentoGraphQLClient is a wrapper for GraphQL client and adds Magento specific features:
 - Store selection, Staged catalog data, Caching
- GraphQL client can be used for more generic use cases.
 - Convenient adapter factory: `resource.adaptTo(GraphQLClient.class);`
 - Open-source: <https://github.com/adobe/commerce-cif-graphql-client>

Use Case 3

GraphQL Integration Layer

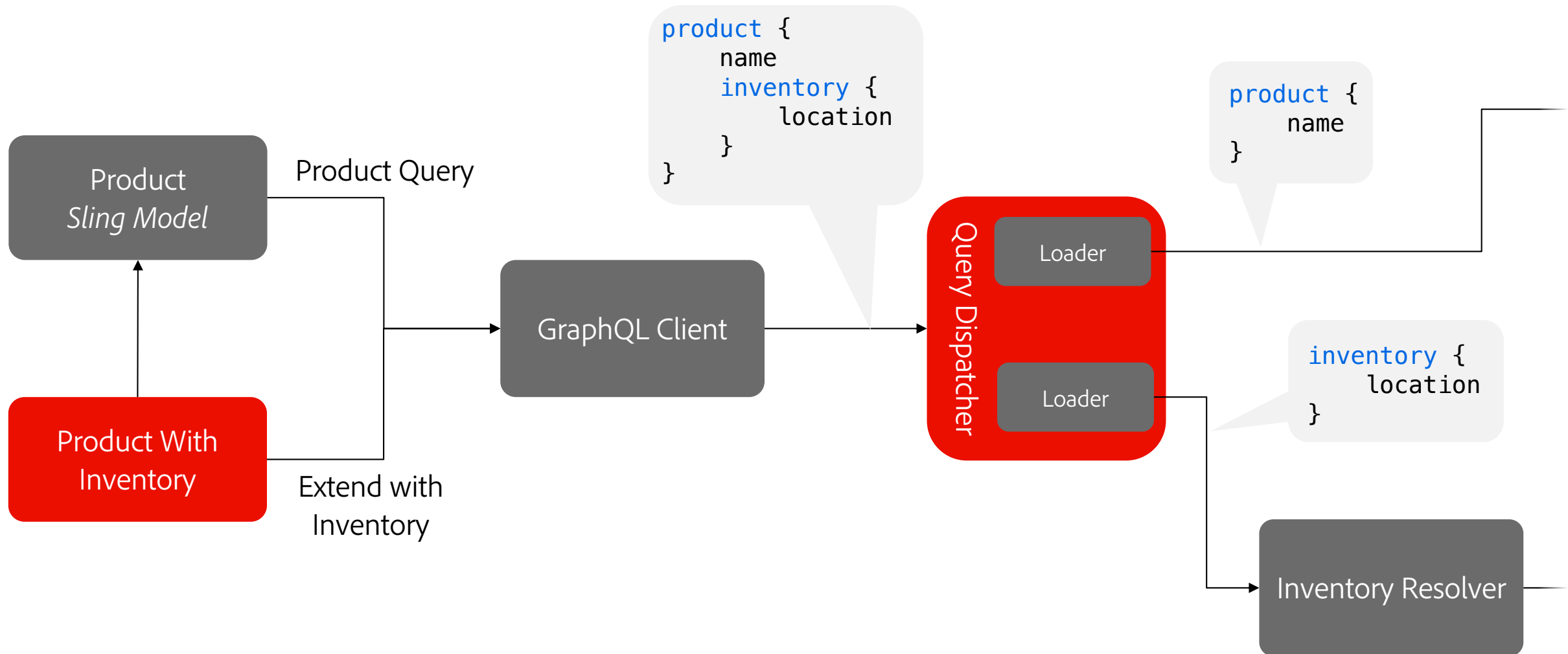


GraphQL Integration Layer

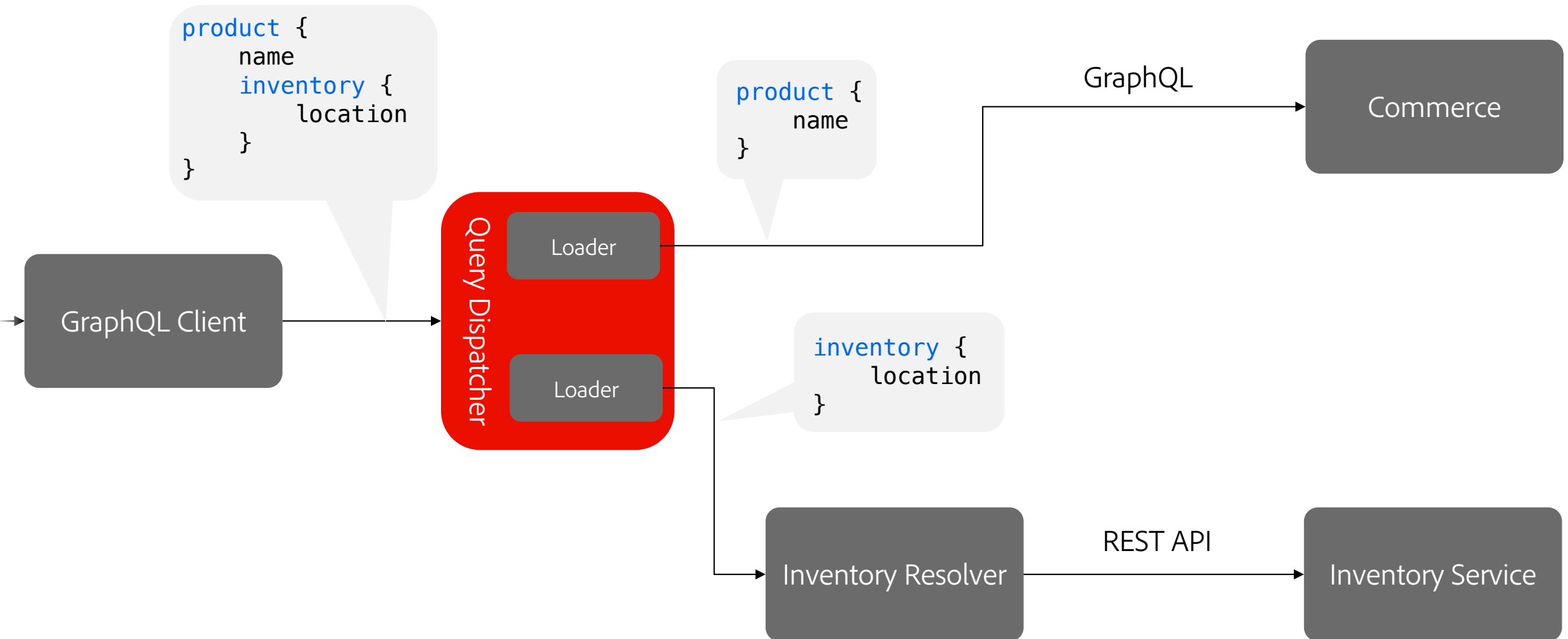


- Single GraphQL endpoint
- GraphQL server, runs on serverless infrastructure
- Customize GraphQL endpoint to
 - Federate data from multiple services
 - Support services without GraphQL APIs
 - Add custom logic
 - Translate APIs of 3rd party Commerce engines

Example



Example



Takeaway



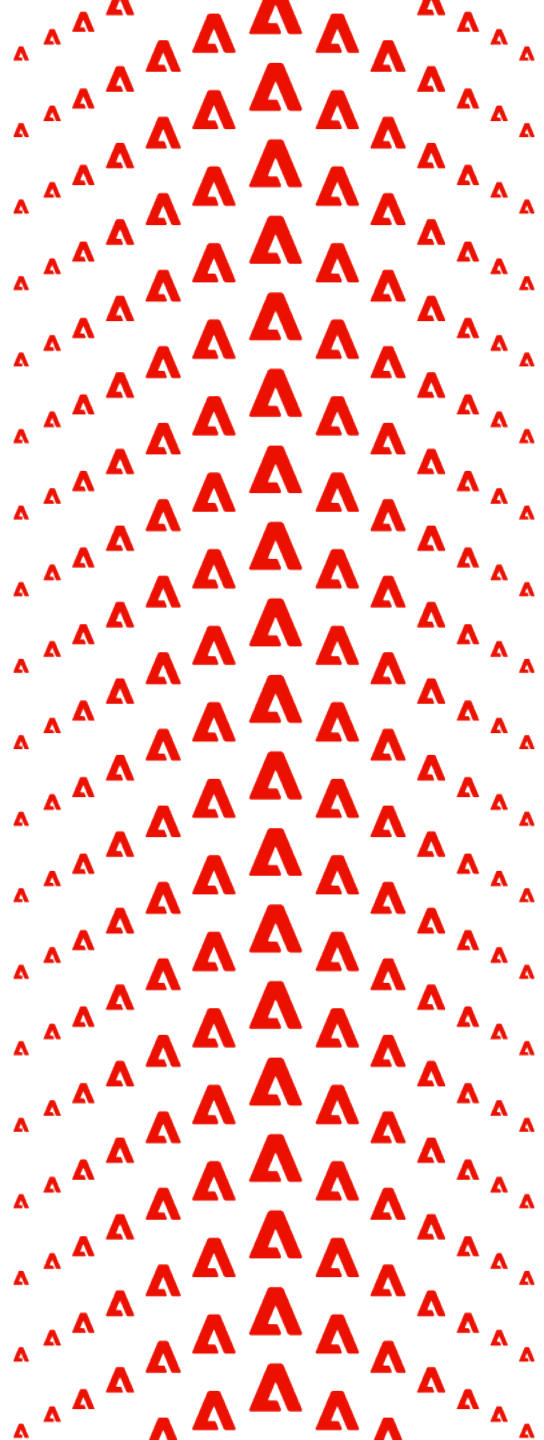
Integrate External Services

Example: Store finder

GraphQL Integration Layer

- Extend, merge or customize your GraphQL schema.
- Serverless architecture for low performance impact
- Reference implementation available:
 - Open-source: <https://github.com/adobe/commerce-cif-graphql-integration-reference>
 - Blog post: <https://medium.com/adobetech/serverless-graphql-on-adobe-i-o-runtime-e221d2a8e215>
- Contributions by Adobe partners for 3rd party commerce engine support.

Q&A



Resources

Documentation

- AEM Core Components Library
<https://www.aemcomponents.dev/>
- Customize CIF Core Components
<https://experienceleague.adobe.com/docs/experience-manager-cloud-service/commerce/customize/customize-cif-components.html>

GitHub

- GitHub: CIF Core Components
<https://github.com/adobe/aem-core-cif-components>
- GitHub: CIF GraphQL Client
<https://github.com/adobe/commerce-cif-graphql-client>
- GitHub: GraphQL Java Generator
<https://github.com/adobe/graphql-java-generator>
- GitHub: GraphQL Integration Layer Reference Implementation
<https://github.com/adobe/commerce-cif-graphql-integration-reference>
- GitHub: Customization Patterns Examples
<https://github.com/adobe/aem-cif-guides-venia/compare/conference/extensibility>

Discuss

- Serverless GraphQL on Adobe I/O Runtime Medium Article
<https://medium.com/adobetech/serverless-graphql-on-adobe-i-o-runtime-e221d2a8e215>
- Experience League Community
<https://experienceleaguecommunities.adobe.com/t5/adobe-experience-manager/adobe-developers-live-2021-session-cif-extensibility-via-graphql/td-p/394476>

