



DEVELOPERS LIVE

AEM Assets Cloud Service – Bulk Import tool

Jun Zhang | Senior Computer Scientist

Kaushal Mall | Engineering Manager



Agenda

- Bulk Import tool overview
- Best Practices
- Architecture
- Demo
- Q&A

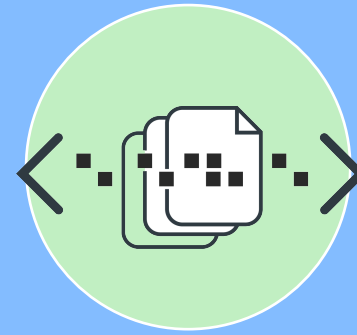
Asset 30 Pillars



Asset Ingestion



Roles and
Permissions



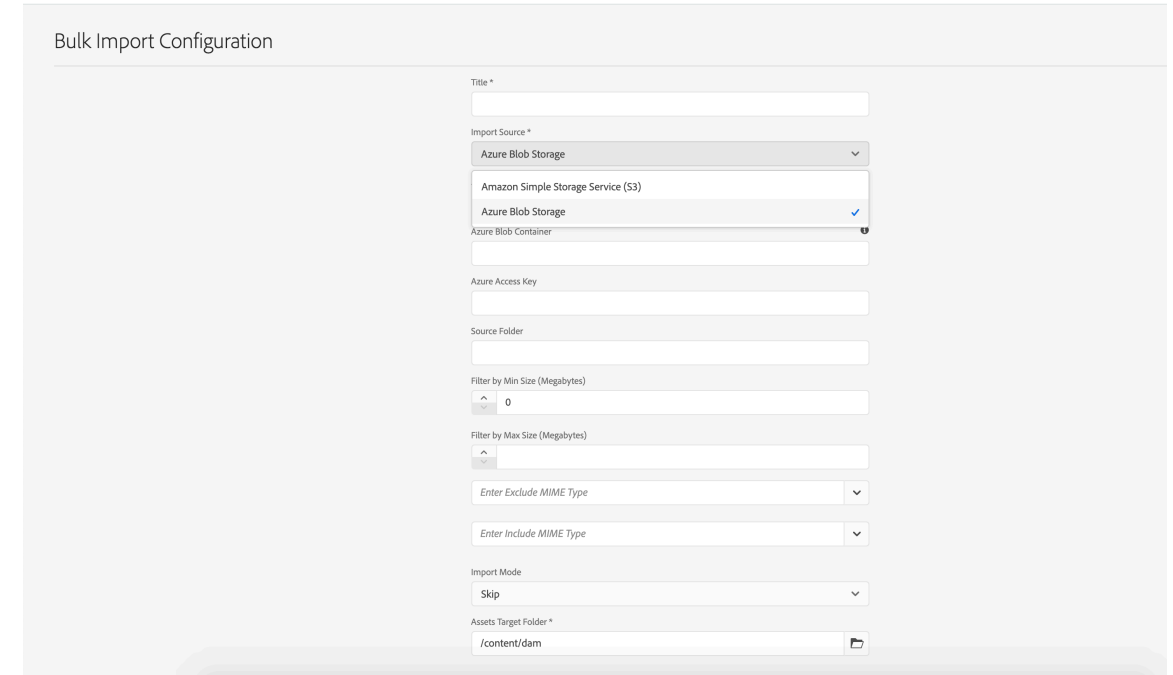
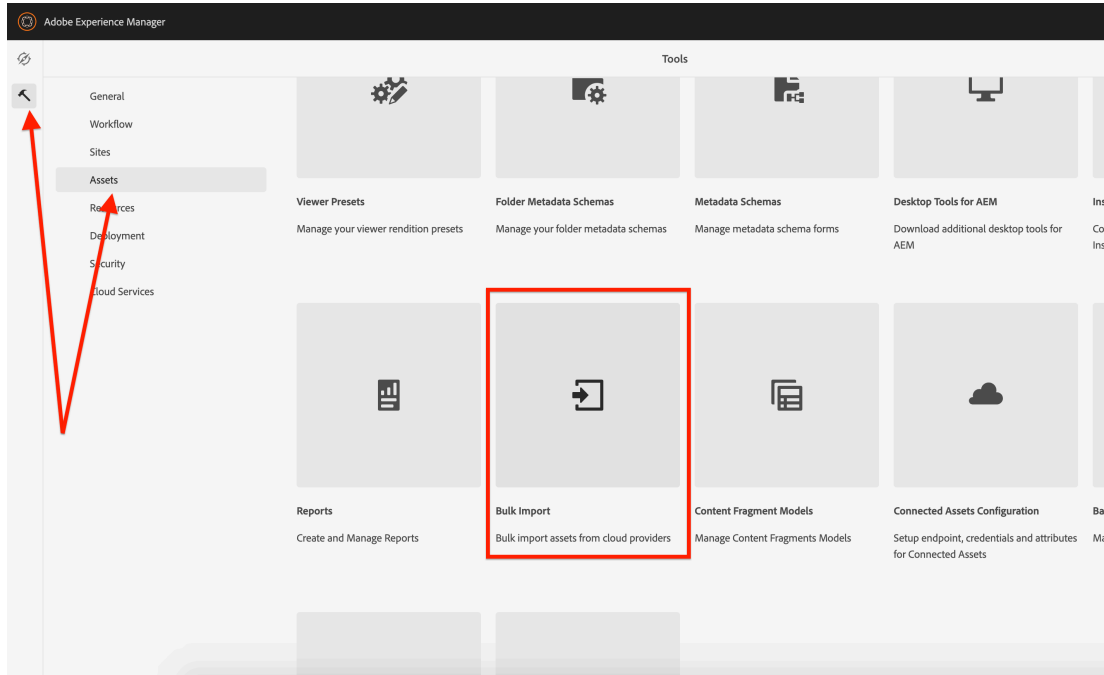
Metadata
Management



User Experience
(In-product
Guidance)

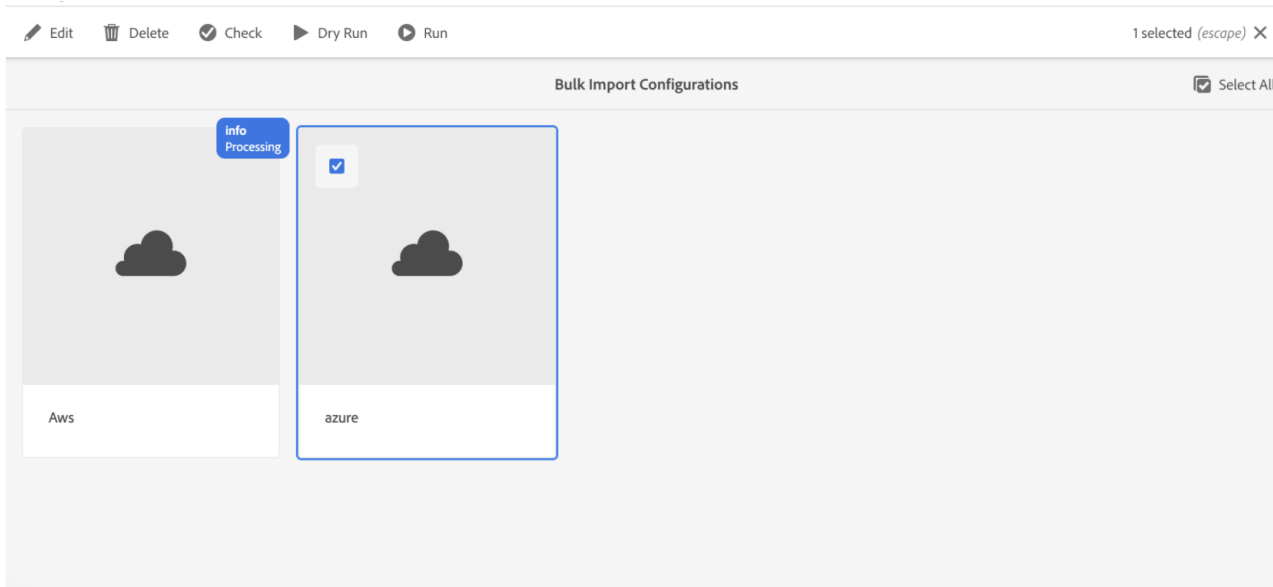


Bulk Import tool

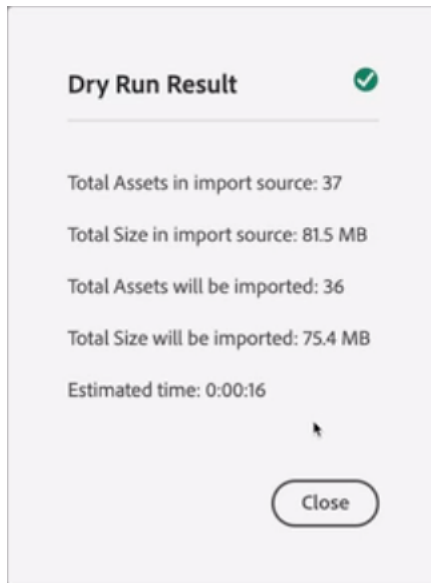


- Located under Tools > Assets > Bulk Import
- Currently supports Azure Blob or Amazon S3
- Behavior controlling properties like size, mime type, import mode
- <https://adobe.ly/3oNngBL>

Bulk Import tool - Running

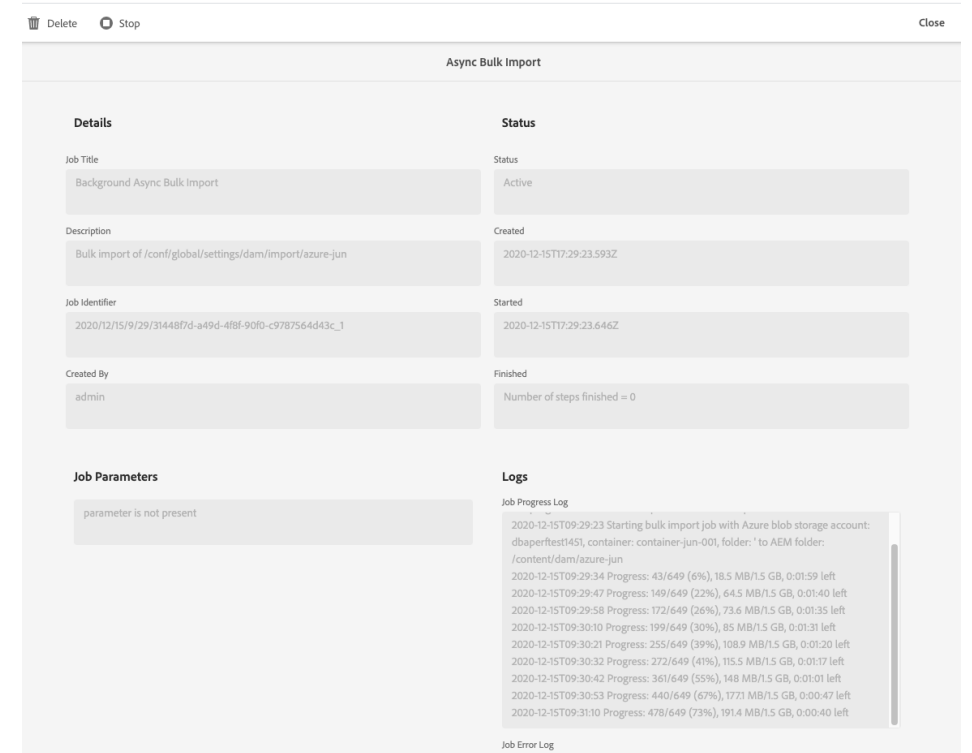
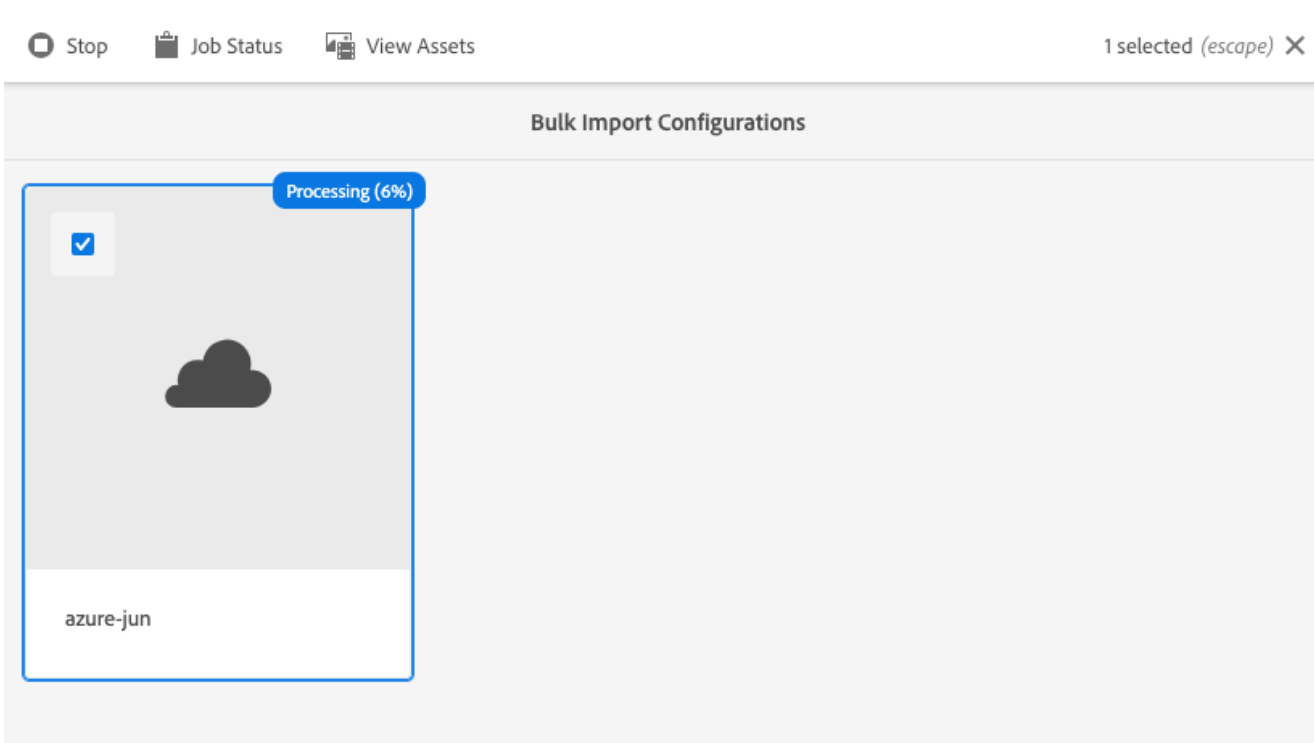


Button	Config broken	No Job	Job succeeded&failed	Job running&queued
Edit	✓	✓	✓	✗
Delete	✓	✓	✓	✗
Check	✗	✓	✓	✗
Dry Run	✗	✓	✓	✗
Run	✗	✓	✓	✗
Stop	✗	✗	✗	✓
Job Status	✗	✗	✓	✓
View Assets	✓ * if target folder exists			



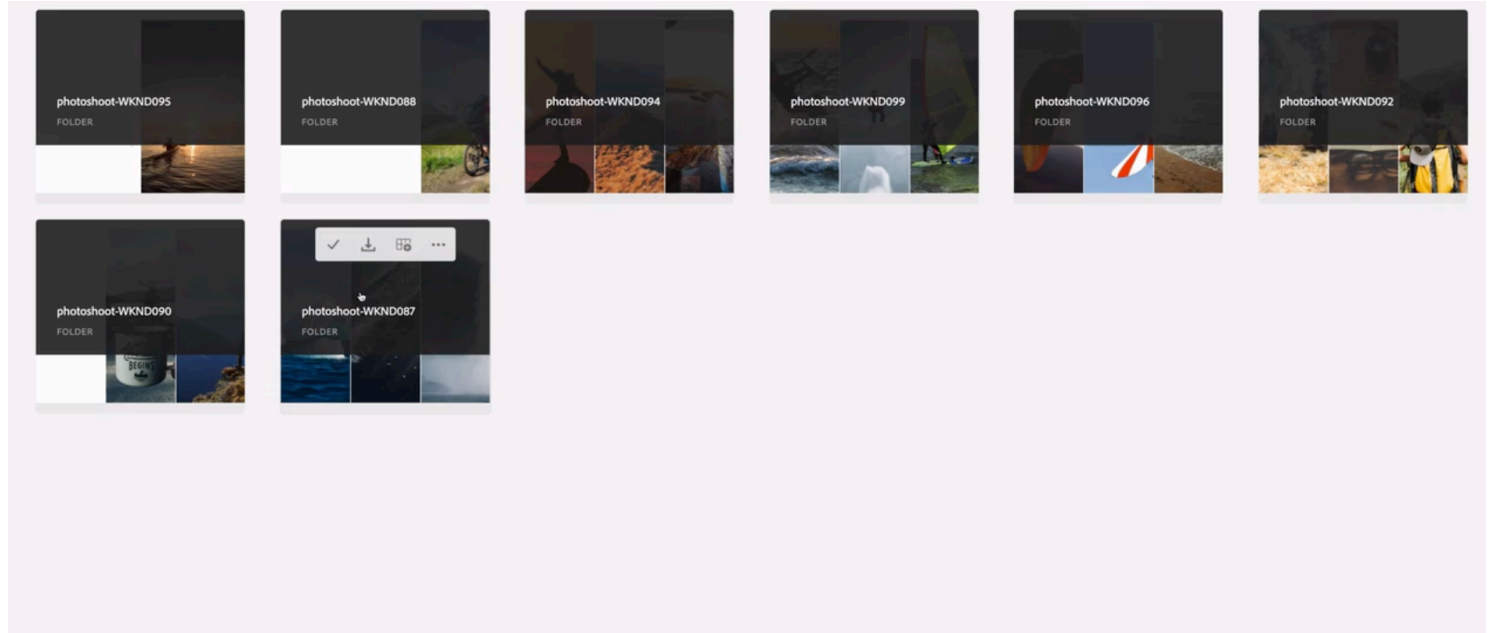
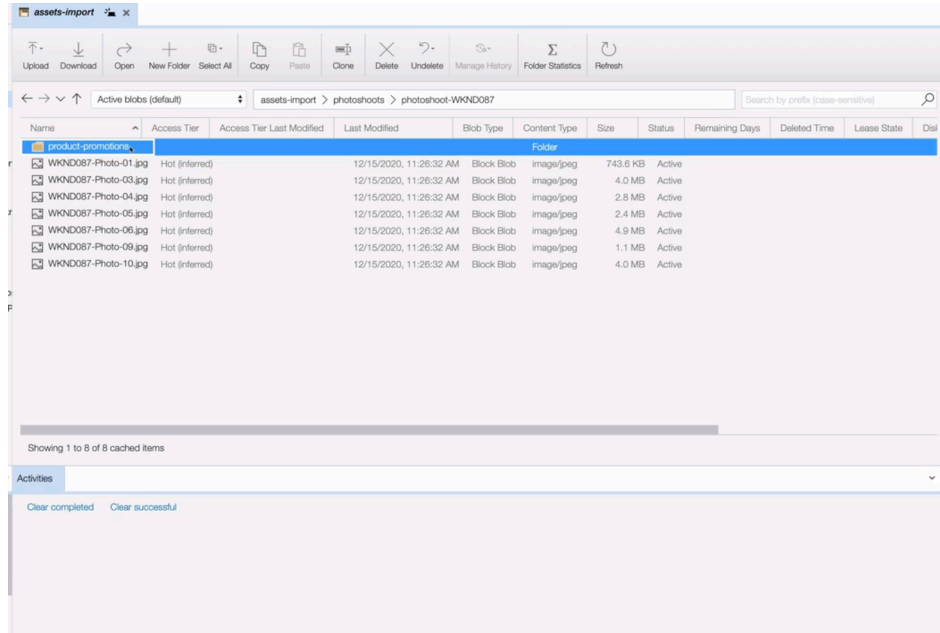
- Not all buttons are available on the created configs

Bulk Import tool – In Progress



- Progress Indicator
- Job Status UI

Bulk Import tool – Importing



- The tool mirrors the folder structure in the cloud provider storage
- AEM specific asset processing

Bulk Import tool – Best Practices

- Only available to administrators
- Use the Check button to check if there is any connection issue
- Use the Dry Run button to get your estimates
- Import mode configuration can be your friend – skip, replace, create version
- The folder & asset names are sanitized to be AEM friendly
- Smaller batches FTW!

Assets Bulk Ingestion Performance*

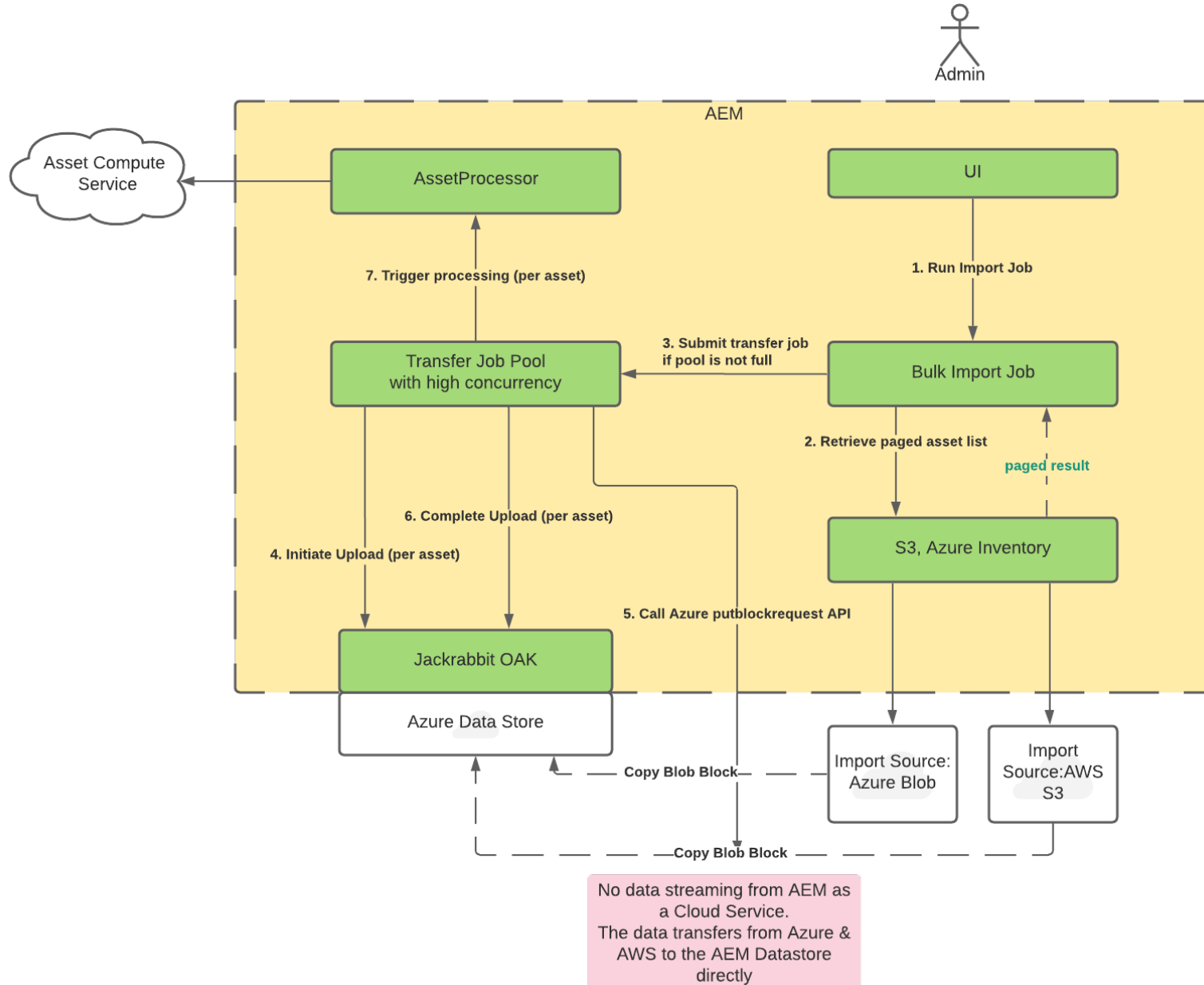
*based on our tests

~20,000 assets/hour

~23 TB of real customer data

0 downtime

Bulk Import tool - Architecture



Demo!



Q&A

