



AEM Web Performance

Joel Richard | Developer

Contents

- Network
 - Basic optimizations
 - Images
 - Parallelization
 - HTTP/2
 - Resource Hints
 - Concatenation
 - Lazy loading
 - Integrations
- JavaScript
 - Library overhead
 - Profiling
 - Minimizing reflows
- Server
 - Common issues
 - Built-in tools
 - Profiling



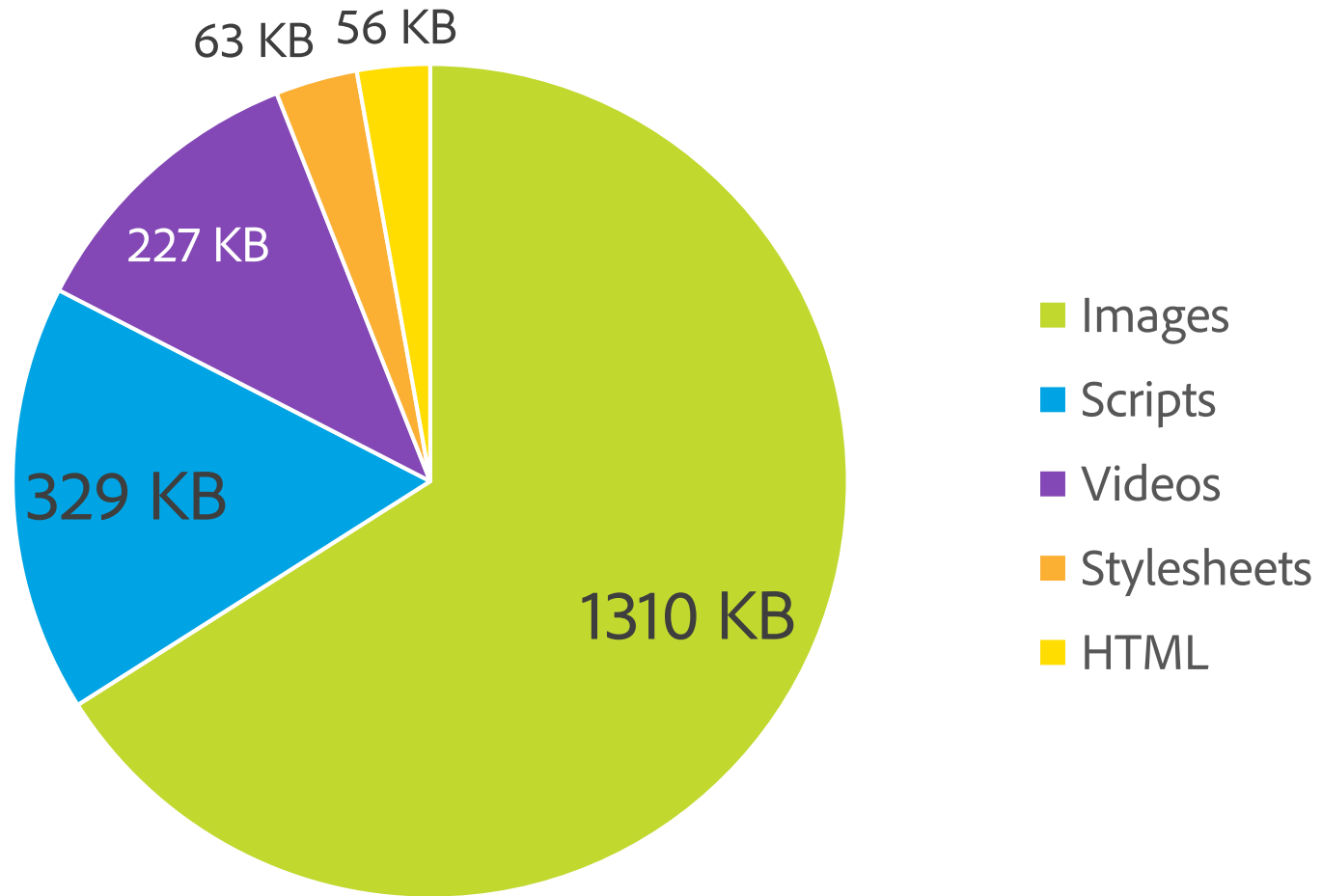
Network

How to use available resources efficiently

Basic Optimizations

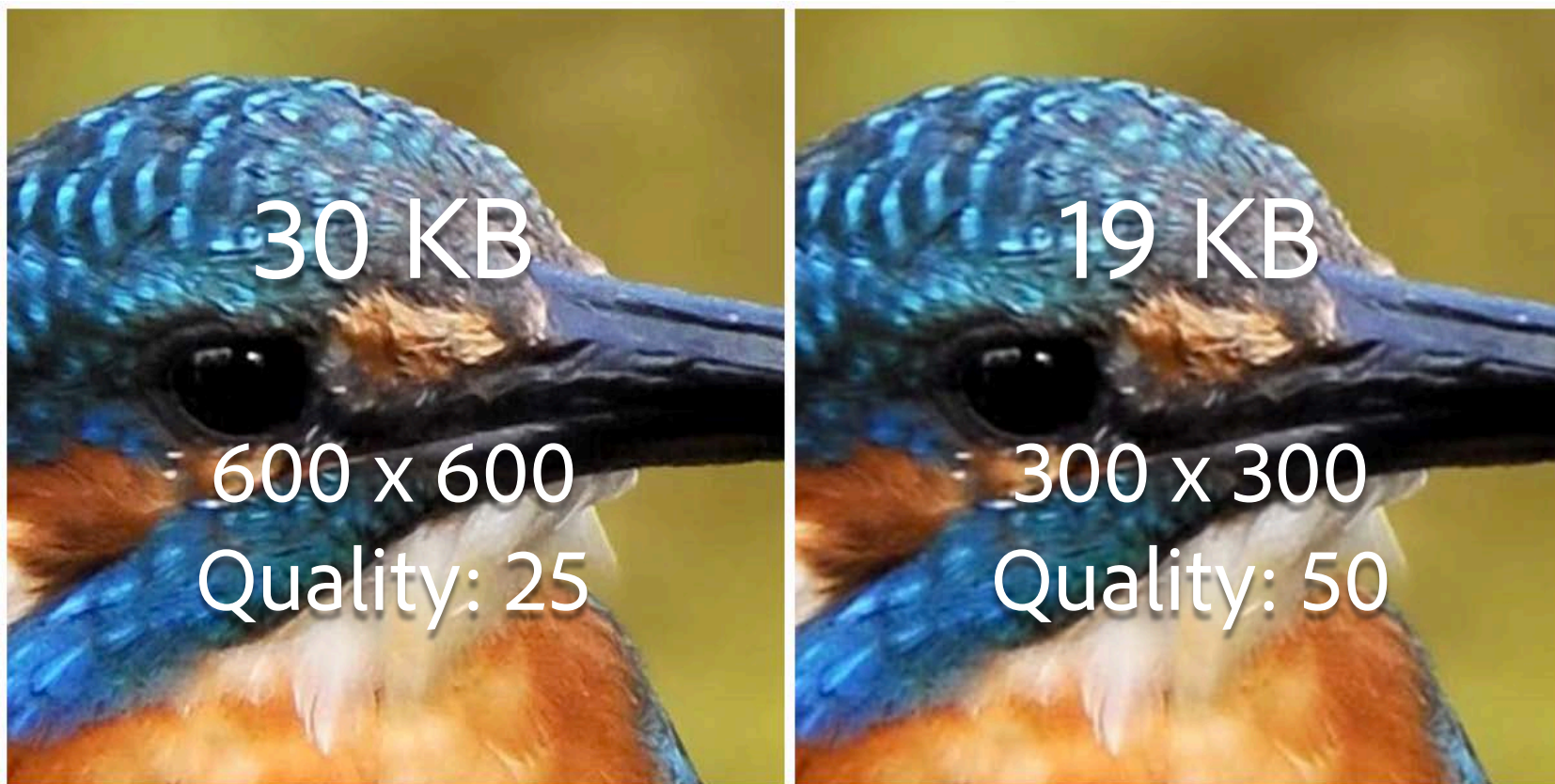
- Dispatcher caching
- Keep-Alive
 - Apache: KeepAlive On (*default*)
- Gzipping
 - Apache: AddOutputFilterByType DEFLATE
- HTTP caching
 - Apache: ExpiresDefault, ExpiresByType

Average Payload 2015: 2.1 MB (Soasta)



Shrink Payload: High-DPI Images

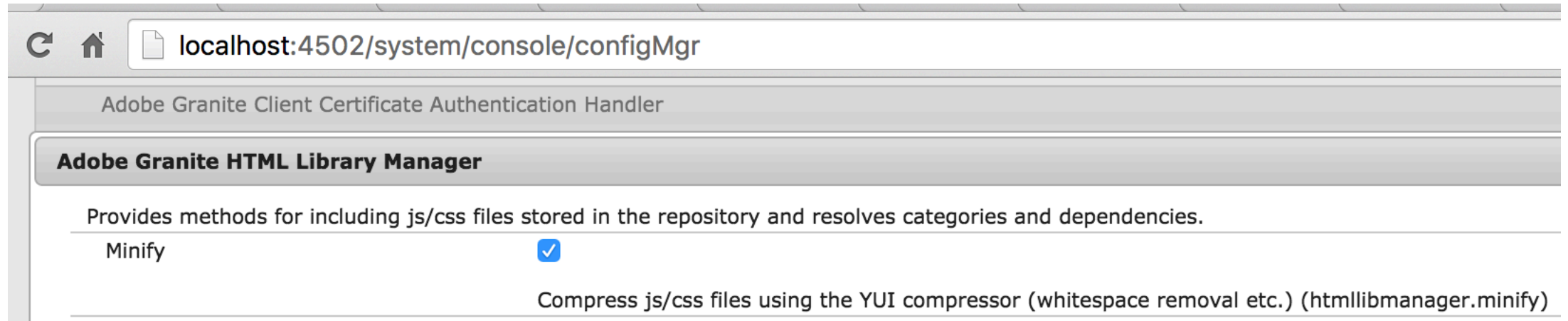
- Low quality is (often) better than low resolution:



Shrink Payload: Image Components & Servlets

- AEM Core WCM Components: Image Component (GitHub)
 - **Responsive & smart loading**
- ACS AEM Commons: Named Transform Image Servlet
 - **Image transformation**
- Alternatives:
 - **Adaptive Image Component**
 - Responsive
 - **Abstract Image Servlet**
 - YourImageServlet extends `com.day.cq.wcm.commons.AbstractImageServlet`

Shrink Payload: Clientlib Minification



The screenshot shows a web browser window with the address bar displaying `localhost:4502/system/console/configMgr`. The page title is "Adobe Granite Client Certificate Authentication Handler". Below the title, there is a section for "Adobe Granite HTML Library Manager" with the description: "Provides methods for including js/css files stored in the repository and resolves categories and dependencies." Underneath, there is a configuration option for "Minify" which is checked with a blue checkmark. The description for this option is "Compress js/css files using the YUI compressor (whitespace removal etc.) (htmlibmanager.minify)".

localhost:4502/system/console/configMgr

Adobe Granite Client Certificate Authentication Handler

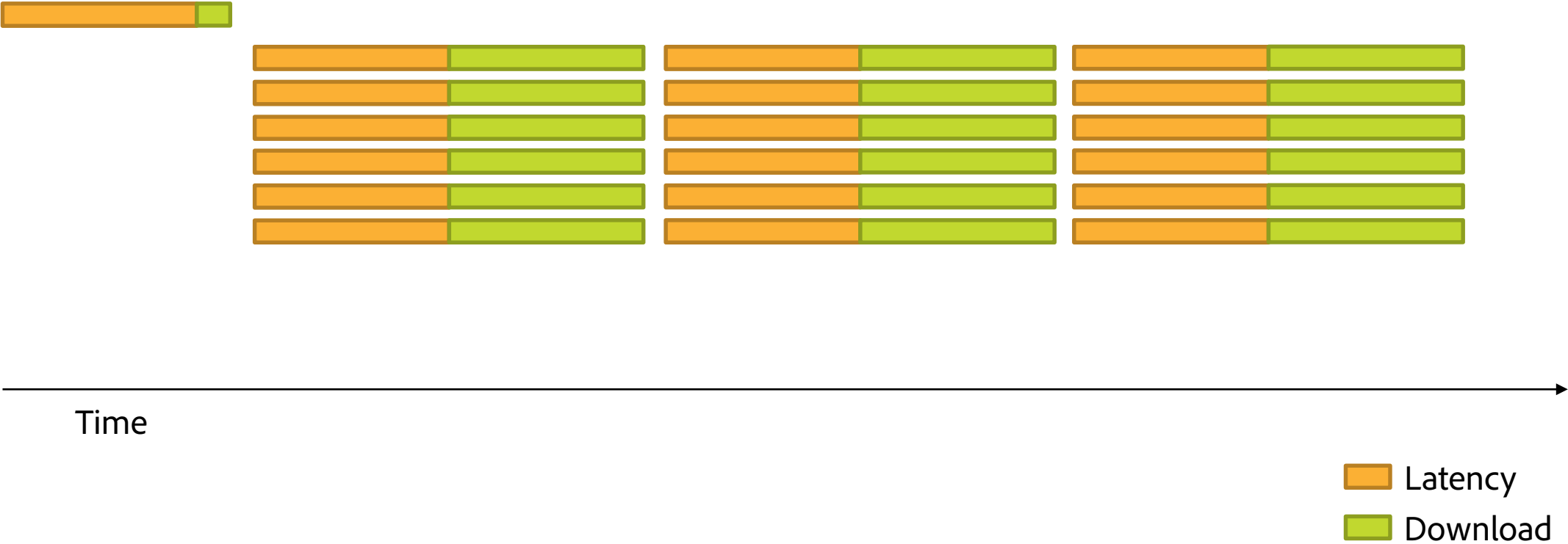
Adobe Granite HTML Library Manager

Provides methods for including js/css files stored in the repository and resolves categories and dependencies.

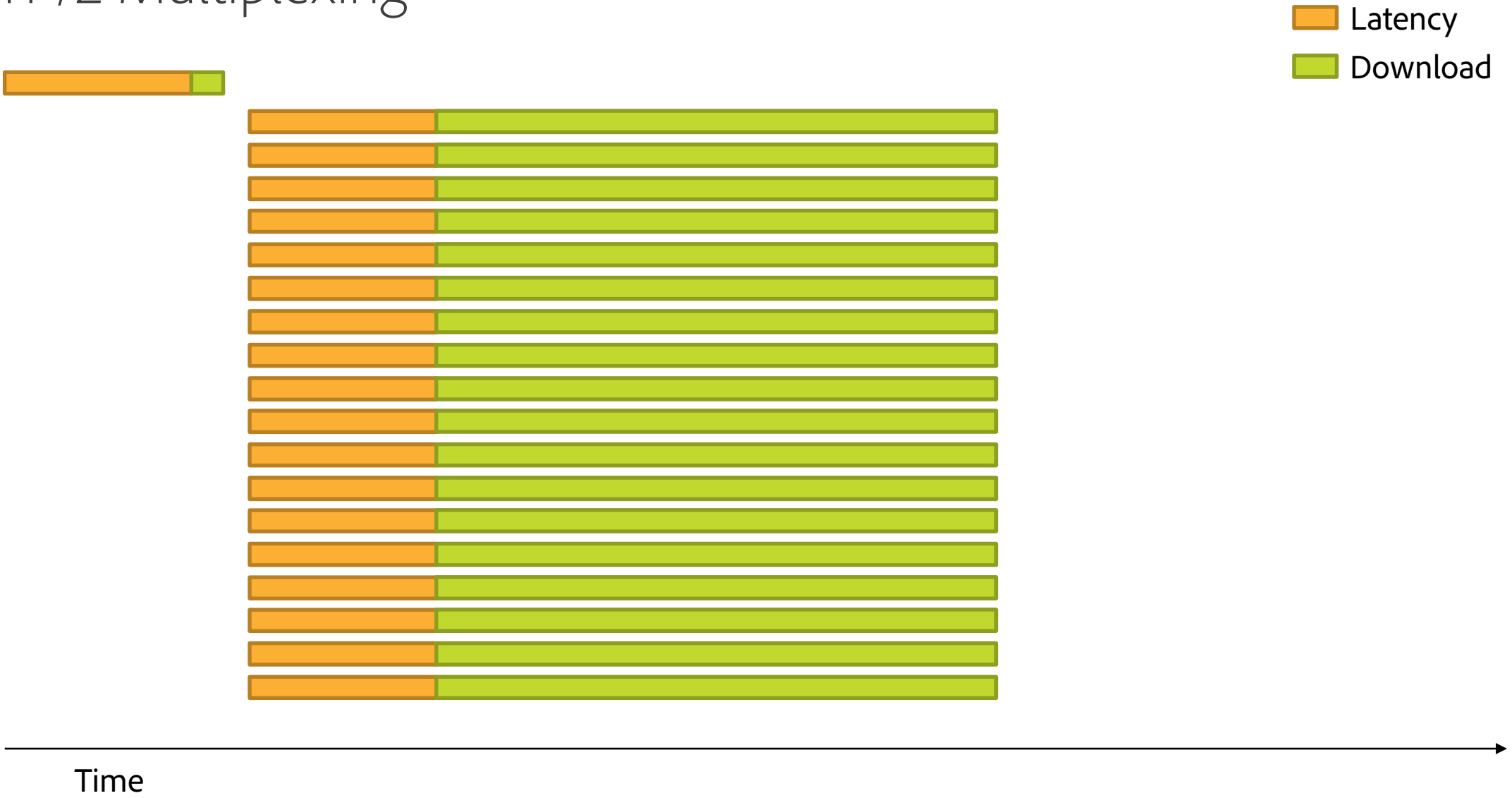
Minify

Compress js/css files using the YUI compressor (whitespace removal etc.) (htmlibmanager.minify)

HTTP/1.1 Request Flow



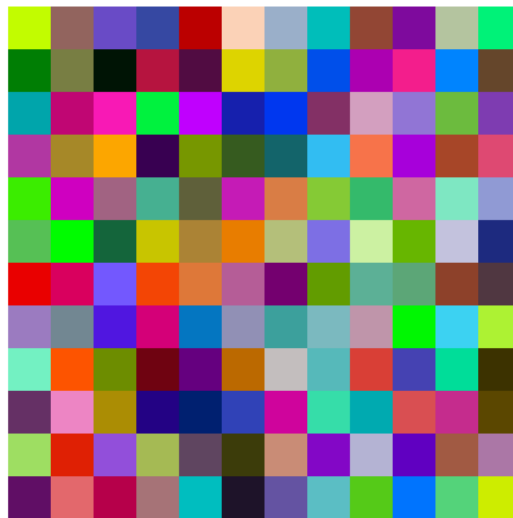
HTTP/2 Multiplexing



HTTP/2 Technology Demo

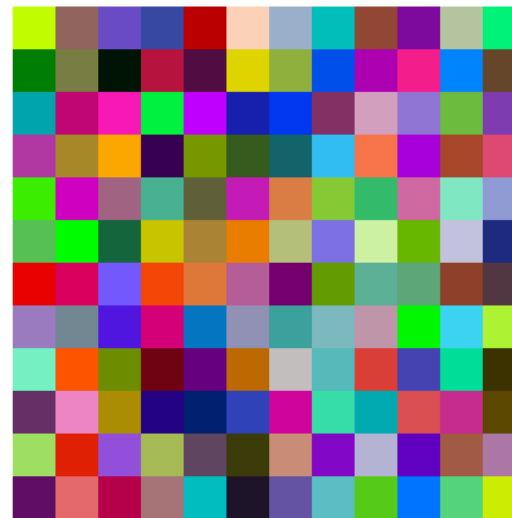
HTTP/1.1

Start Time: 432 ms



HTTP/2

Start Time: 263 ms



HTTP/2 with Apache

- Apache 2.4.17
- mod_http2
- SSL
- Dispatcher 4.2.0 (mid June)

HTTP/2 Server Push

Latency
Download



Time

HTTP/2 Server Push with Apache

- Directive: H2Push on (*default*)
- Example Configuration:

```
<Location /content/example.html>  
  Header add Link "</etc/designs/example/clientlib.min.css>;rel=preload"  
</Location>
```

Preload & Resource Hints

- dns-prefetch
- preconnect
- prefetch
 - Subsequent navigation
- prerender
- preload
 - Current navigation

- As HTTP header or link tag

```
<link rel="preconnect"  
      href="https://www.adobe.com">
```

▼ Response Headers [view source](#)

Content-Type: text/html; charset=UTF-8

Date: Wed, 01 Jun 2016 00:40:32 GMT

Link: <http://www.adobe.com/>; rel=preconnect

Transfer-Encoding: chunked

X-Content-Type-Options: nosniff

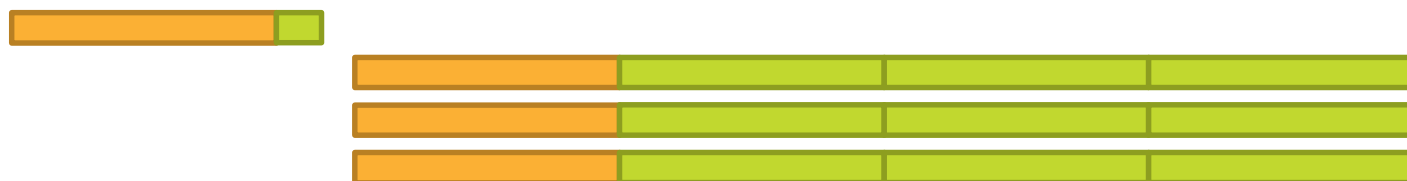
HTTPS Connection Initialization



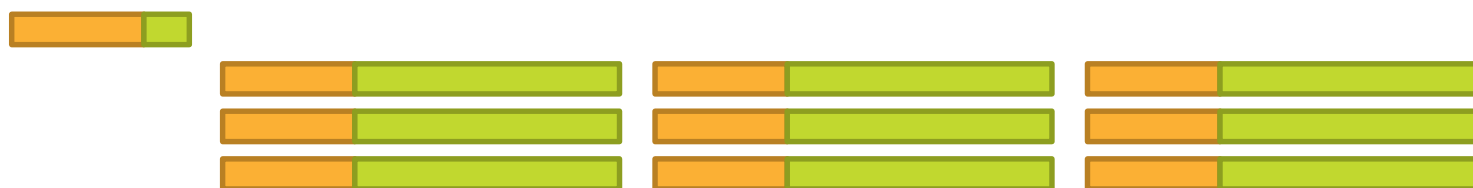
What about HTTP/1.1?

Latency
Download

- Reduce number of requests:



- Reduce latency (CDN):



Time →

HTTP/1.1: Reduce Number of Requests

- Concatenate JavaScript & CSS
- Images:
 - Inline icons (Data URI)
 - Image sprites
 - CSS substitute
- Inline CSS into <head>
- Combine JSON responses

```
url("data:image/png;base64,iV
```



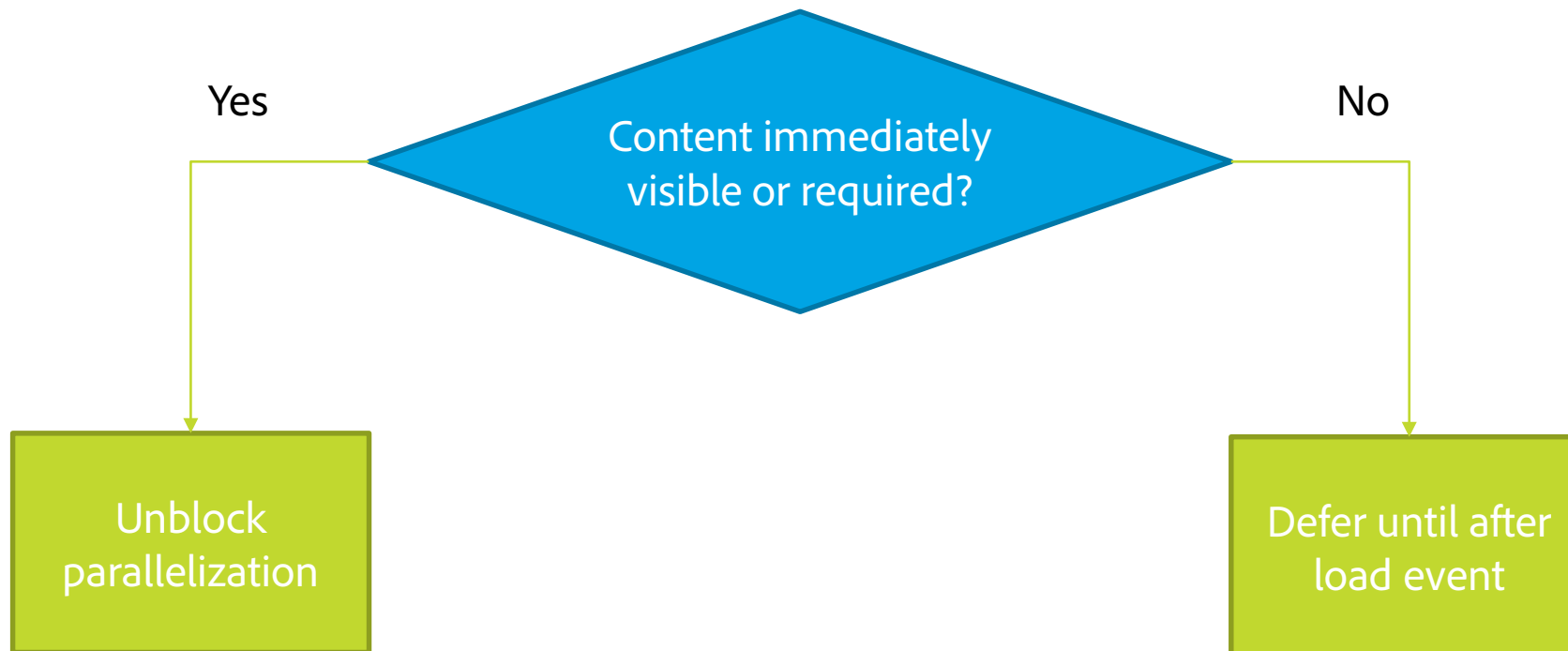
adobe-icons.png

Concatenate JavaScript and CSS

- Create separate embedding client library
 - Use “embed” instead of “dependencies”
 - Only direct dependencies are embedded

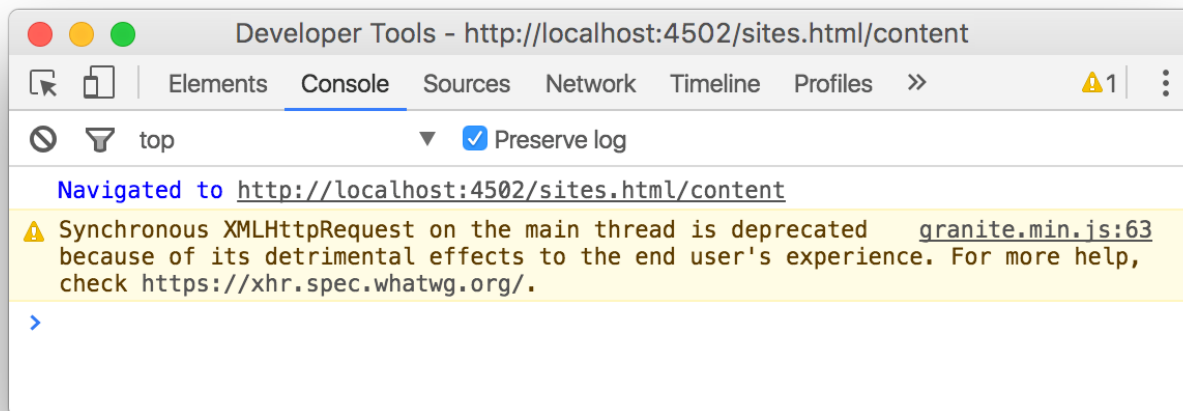
Properties				Access Control	Replication	Console
	Name ▲	Type	Value			
1	categories	String[]	project.optimized			
2	embed	String[]	jquery, project.clientlib1, project.clientlib2			

Divide & Conquer

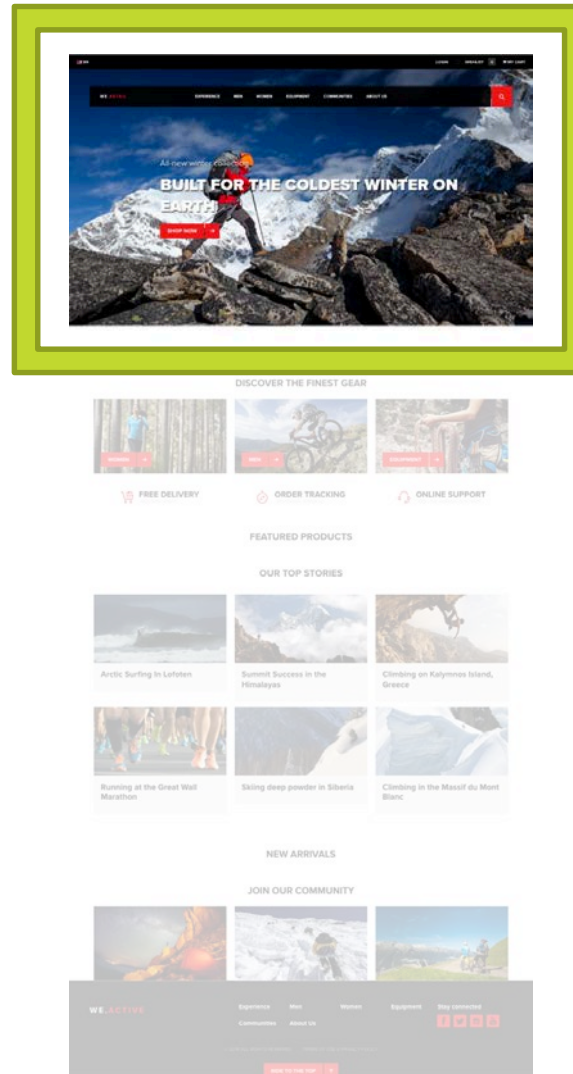


Unblock Parallelization

- Don't block & don't delay
- Blocking examples:
 - Slow JavaScript
 - Synchronous AJAX
- Delaying examples:
 - Load important images with JavaScript
 - Recursive dependency resolution



Lazy-load Hidden Images



Lazy-load Hidden Images

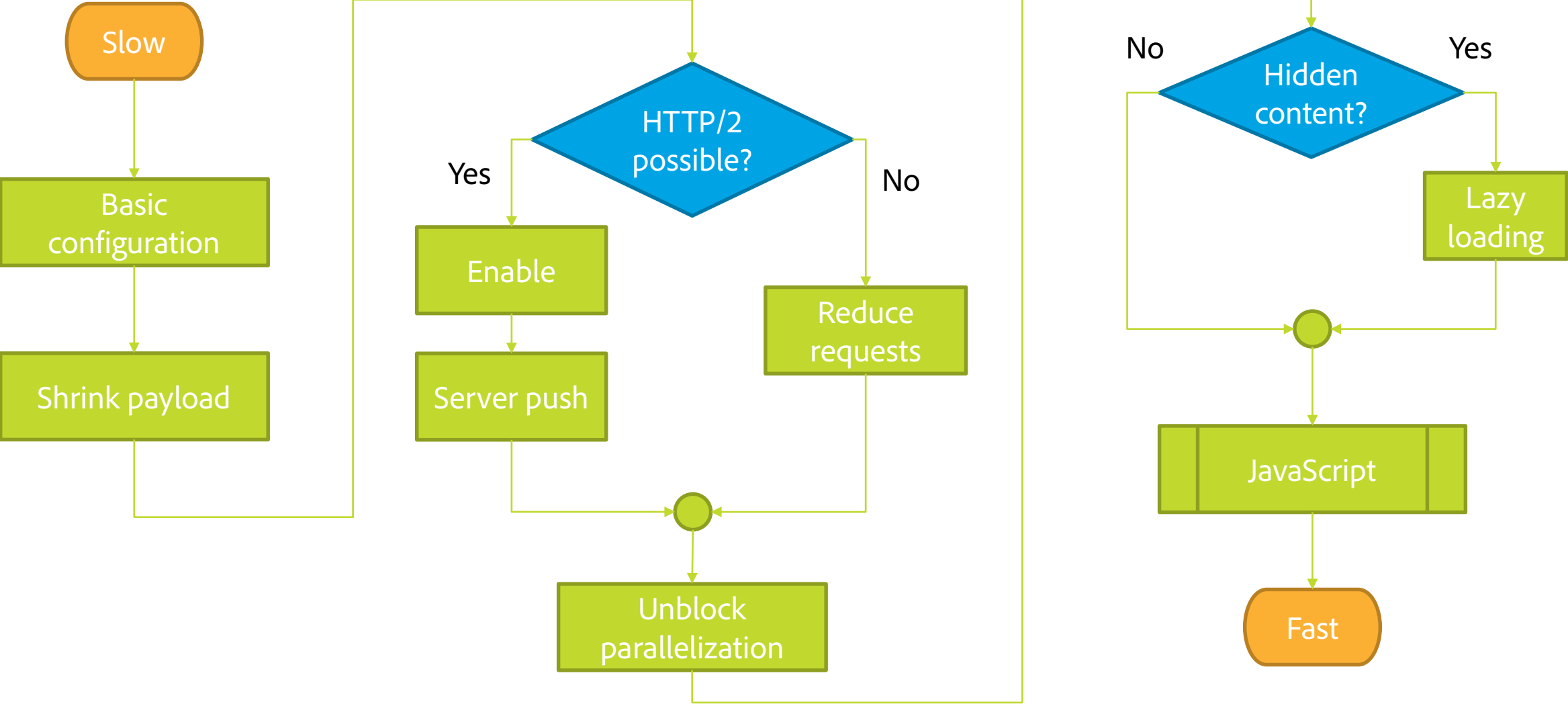
- Options:
 - AEM Core WCM Components: Image Component
 - Accelerated Mobile Pages Project: amp-img
 - Lazy Load Plugin for jQuery
- Few lines of JavaScript:

```
$(window).load(function () {  
    $('img[data-lazy-src]').each(function () {  
        var $img = $(this);  
        $img.attr('src', $img.data('lazySrc'));  
    });  
});
```

Rethink Integrations

- Load optional integrations lazily
- Pick one integration per type
 - One tag manager solution
 - One analytics solution
 - ...
- Leverage resource hints
 - **preconnect**

Network Summary

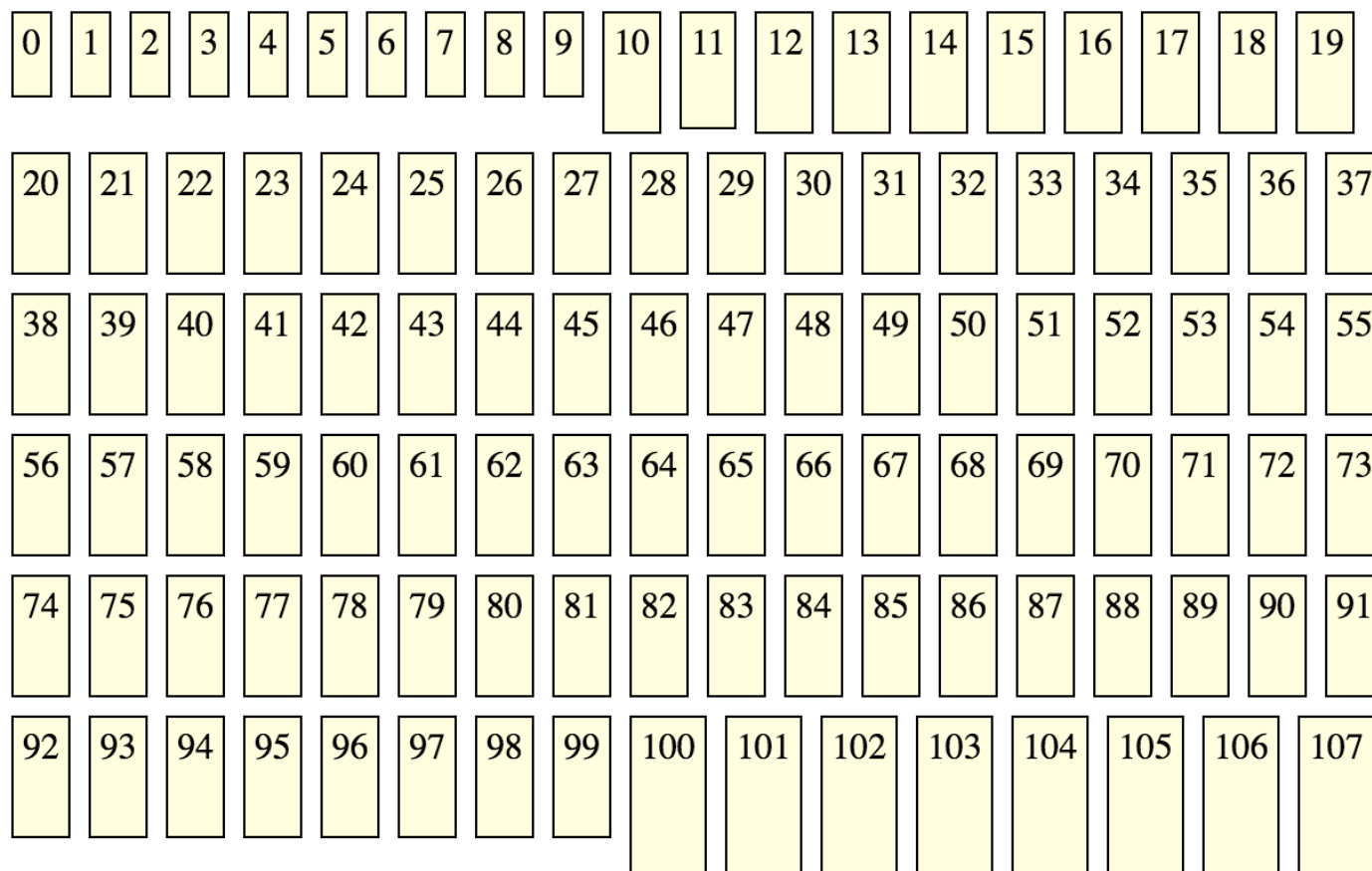




JavaScript

How to make it faster & reduce overhead

Profiling Example



Minimizing Reflows & Restyles

- Group layout/style **read** operations:
 - `$el.width(), $el.css()`
 - `el.offsetLeft, window.getComputedStyle()`
- Group layout/style **write** operations:
 - `$el.width(width), $el.css(properties)`
 - `el.style.property = value`
- Comprehensive list: <https://gist.github.com/paulirish/5d52fb081b3570c81e3a>

The Cost of a JavaScript Library

- Transmission
- Parsing
- Compilation
- Execution
- Event listeners
- Garbage Collection



Server

How to analyze slow requests

Common Issues

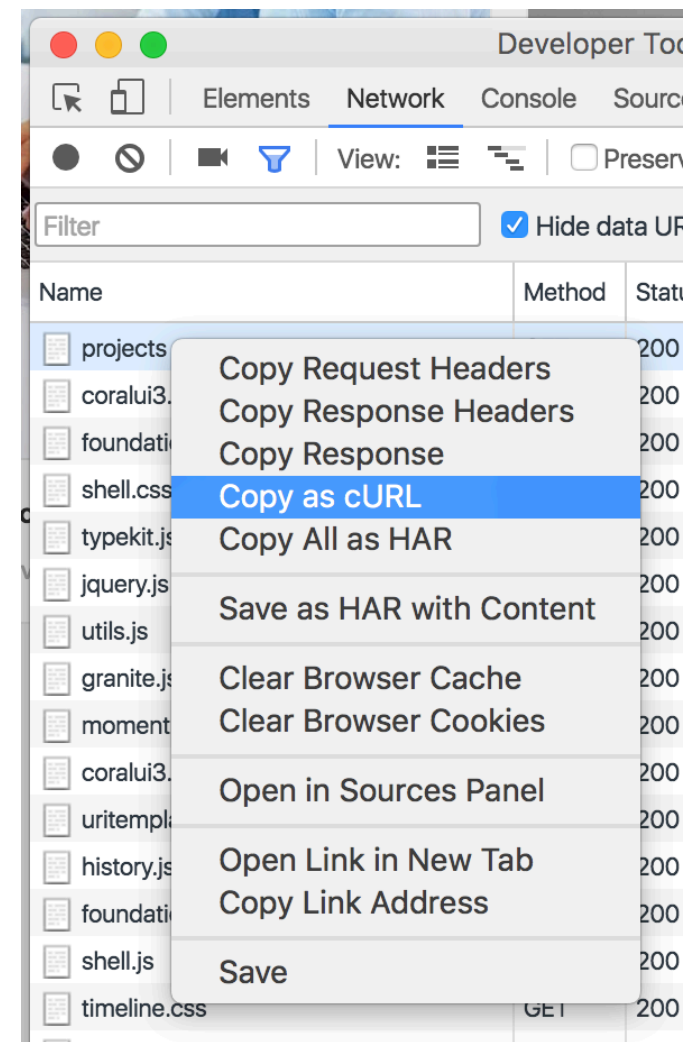
- Slow queries
 - Missing index definitions
- Tree traversal with cache misses
 - Document Store (MongoDB)
- Session leaks
 - MBean for long-running sessions
- Lots of Sling includes
 - Bindings overhead

Built-in Tools

- Editor: Developer Mode
- Diagnosis: Query Performance
- Diagnosis: Request Performance
- Monitoring: Repository Statistics (6.2)
- Sling Profiler

Generating Load for Profiling

- Firefox/Chrome:
 - Developer tools network tab: Copy as cURL
- cURL
 - `while true; do CURL_COMMAND -s > /dev/null; done`
- Apache Bench
 - `ab -n1000 -A author:author URL`



Hot Spots Filtering

What	Search string
Total request time	HttpServletRequest.service
Sightly components	SightlyJava_
JSP components	_jspService
Sling	.sling.
Oak	.oak.

IDE Breakpoint Logging

- IntelliJ/Eclipse

Line 682 in ResourceResolverImpl.java

Enabled

Suspend **All** **Thread**

Condition:

Log message to console

Log evaluated expression:

Remove once hit

Disabled until selected breakpoint is hit:

After breakpoint was hit **Disable again** **Leave enabled**

Filters

Instance filters:

...

Class filters:

...

Pass count:



Questions?



Adobe