

# Visualize your Product in a Realistic Environment



Image source: Adobe Stock / adobestock3d / Vidu Gunaratna.



by [Chris Converse](#)

POSTED ON 10-31-2019

Adobe Products in this article

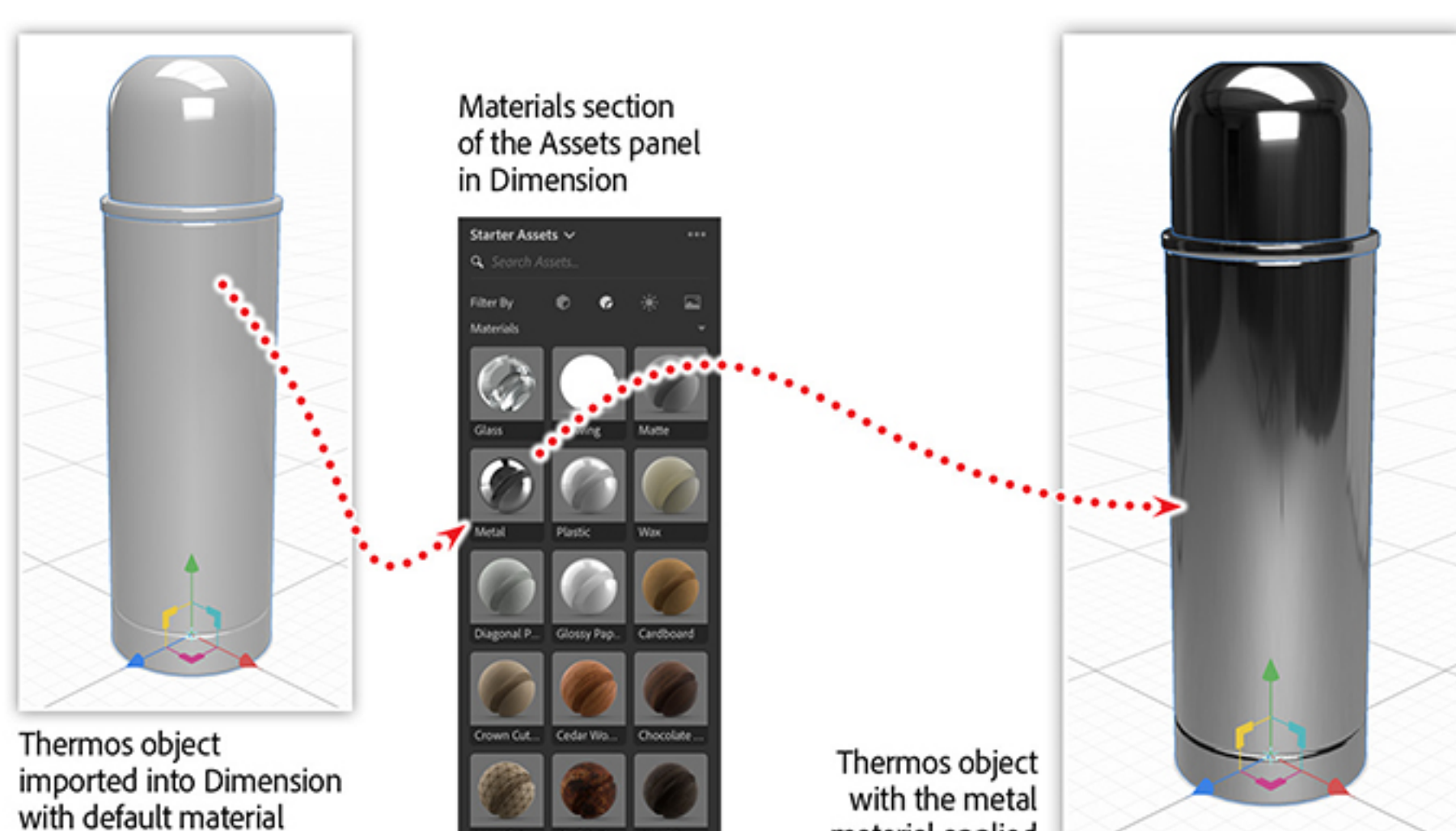


When you want to see how your products will look in the real world, [Adobe Dimension](#) is your go-to app. Dimension offers easy-to-use 3D tools for creating product mock-ups as well as packaging designs, brand visualizations, and more. You can even add a logo to a product mock-up and place it in a realistic-looking environment for that extra touch of authenticity.

## Applying your branding to a 3D model

Start by finding a 3D model that represents the product you'd like to enhance with your branding. [Adobe Stock](#) is a great place to look. Not only is it built into the Dimension Asset panel, but it also offers a wide range of models to choose from — and many of them are available free of charge.

Create a new project in Dimension and import your model by selecting **3D Model** from the **File > Import** menu. Then choose **Frame Selection** from the **Camera** menu in order to see the entire model.



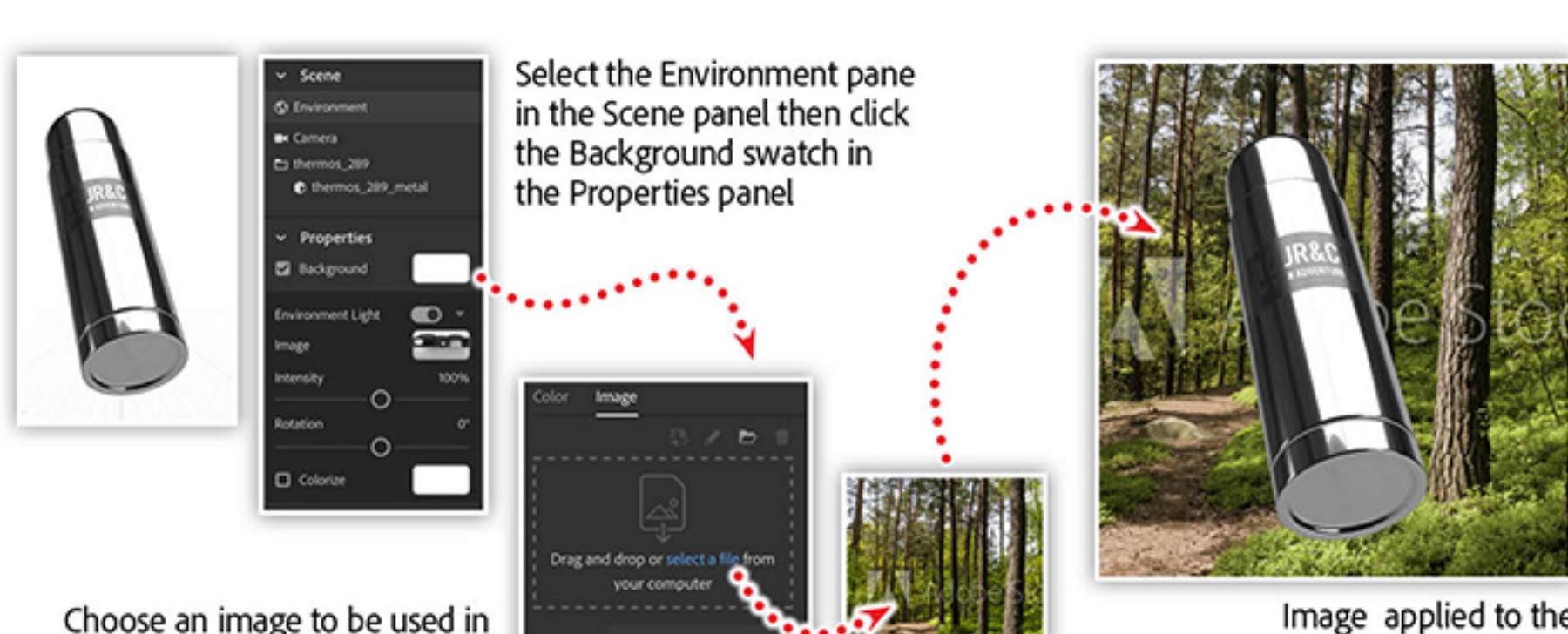
Next, in the **Scene** panel, click the model's folder icon to reveal the materials you can apply. The example below shows the metal material applied to the *Bottle\_Size\_1\_low* section.



With the material selected, click the **Place Graphic on Model** icon in the **Actions** panel and locate your company logo file. Dimension will apply the logo to your model, and then you'll be able to scale, rotate, and position the logo anywhere within the material.

## Adding a background image to enhance your scene

To see how your product will look in the real world, it's a good idea to add a background image to your scene. Select the **Environment** layer in the **Scene** panel and click the **Background** switch in the **Properties** panel. In the dialog, choose **Image** and find a background image that will complement your model.



In order to better integrate your model into the background image, you'll need to combine the background with the model's material. Dimension offers a quick way to do this in the **Actions** panel. With the **Environment** layer still selected in the **Scene** panel, click the **Match Image** button in the **Actions** panel and then click **OK** after Dimension finishes processing the image.



Now you can see the background image reflected in the model's stainless-steel surface. Use the **Rotation** slider in the **Properties** panel to adjust the reflection on the model, or rotate the model using the **Rotation** tool in the toolbar.

## Learn to use Dimension and Adobe XD together to create an engaging eCommerce experience

Discover how to use [Dimension](#) and [XD](#) to take control of product design as well as experience design. Join us online to learn how to design and [prototype](#) a rotating-product interface. You'll create and brand a product in Dimension, and then you'll export a range of 360° images that you can make interactive in XD.

In our [eCommerce 360° Product with XD + Dimension](#) webinar, you'll learn how to:

- Apply materials and artwork to 3D models in Dimension
- Export artwork from Dimension to use in XD
- Create artboards in XD for product views
- Add interactivity in XD with built-in [prototyping tools](#)

Adobe Creative Cloud e-learning series: [eCommerce 360° Product with XD + Dimension](#)

...

### Topics in this article

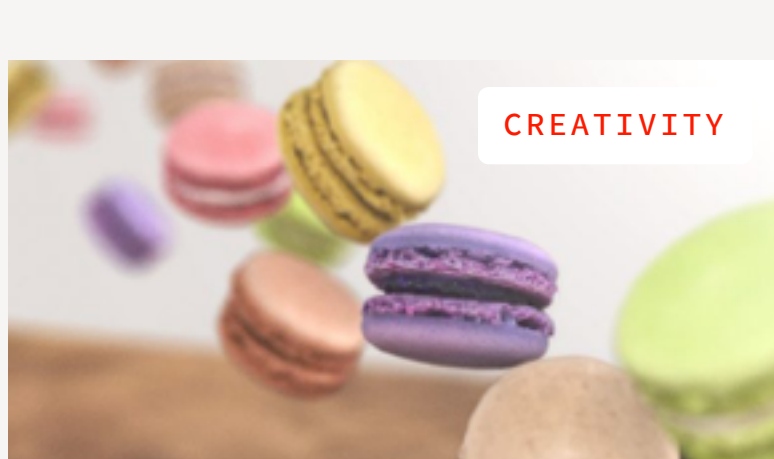


## Recommended Articles



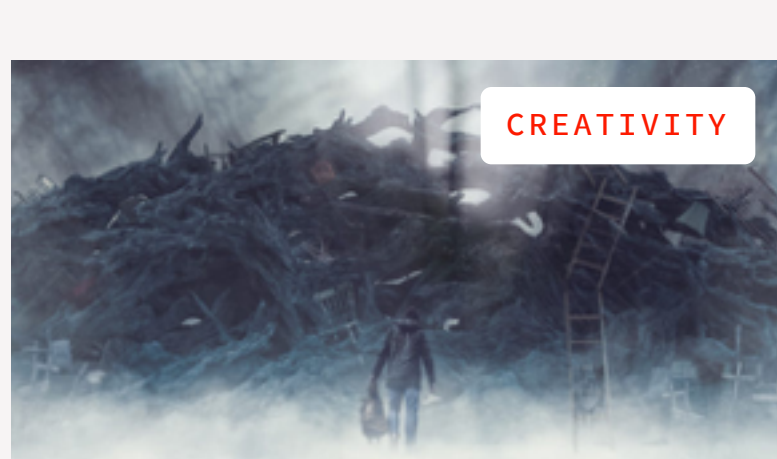
Vladimir Petkovic  
**How Adobe Dimension Can Transform Your Product Design Workflow**

10-25-2019



RC Woodmass  
**The Beauty of the Day-to-Day of 3D Design with John Godfrey**

10-24-2019



Jim Thacker  
**How Adobe Dimension Helped Designer Antony Carlyon Take His Concept to the Next Level**

06-20-2019

