



Show your best work with Adobe Portfolio.

Adobe Creative Cloud Learning Series



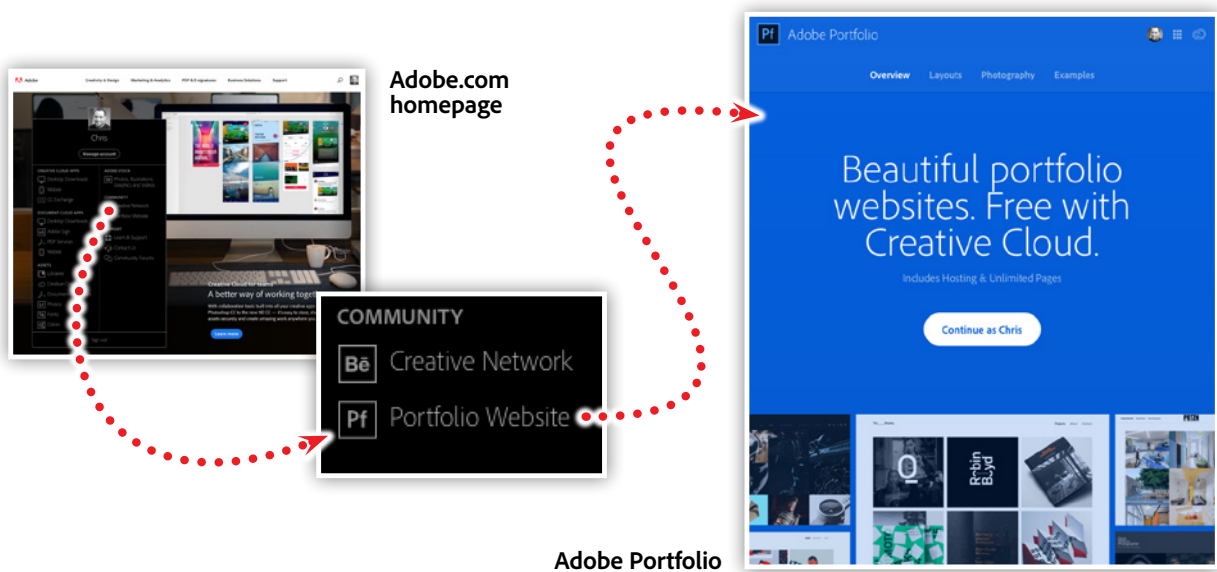
Adobe Portfolio lets you upload, organize, and share your work with potential staff and clients all over the world. Your work will be accessible from anywhere on any device.

Getting started with Adobe Portfolio.

Sharing your best work with Adobe Portfolio is an effective way to share your success and attract new creative talent. Whether you're looking to hire new full-time staff or connect with the freelancer community, Adobe Portfolio lets you upload, organize, and share your work with potential staff and clients all over the world.

You can access Adobe Portfolio directly from the [Adobe.com](https://www.adobe.com) homepage, or by visiting www.myportfolio.com. After you login with your Creative Cloud user name and password, simply click the **Continue as** button, then choose a theme (you can change your theme at any time).

Figure 1

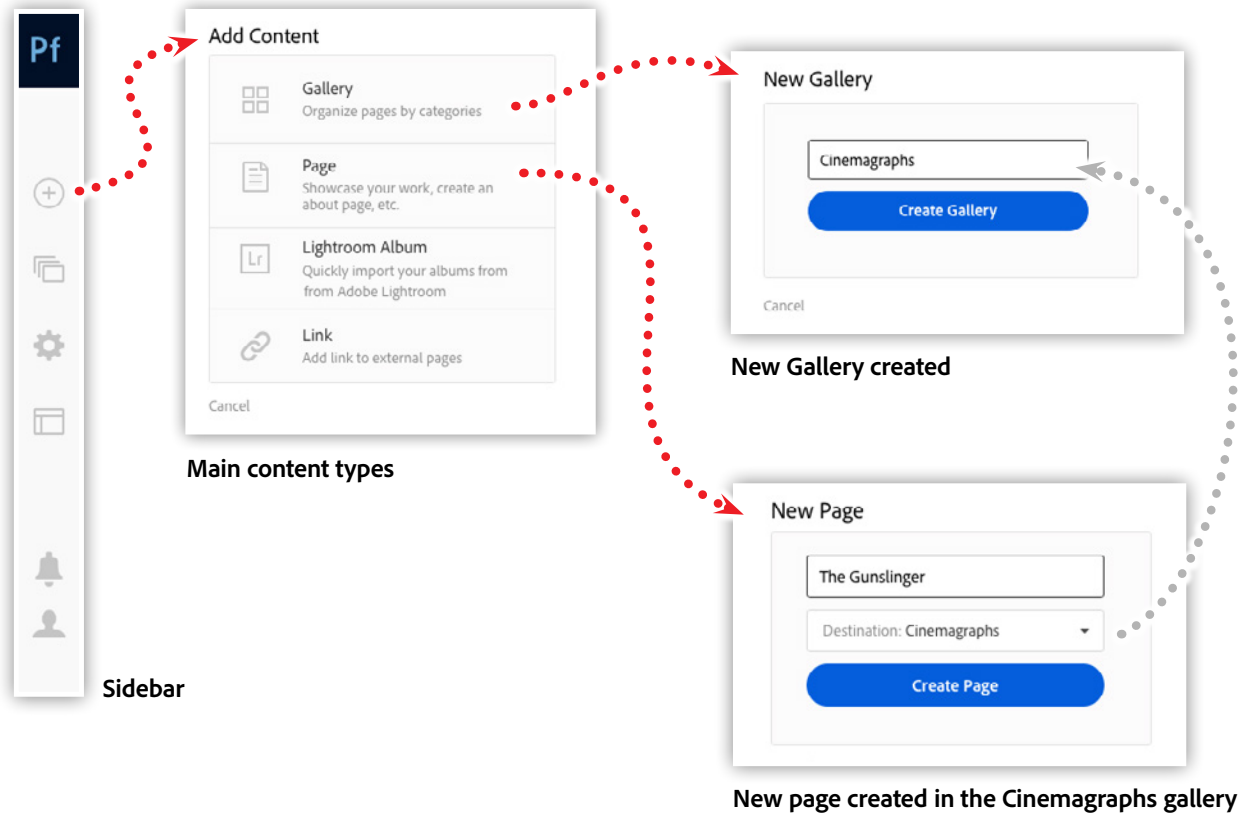


By default, your portfolio is private — so you can begin adding content, and then publish it when you're ready.

Structuring your portfolio.

The main content structure of a portfolio is broken into Galleries, Pages, Albums and Links. Pages typically exist as part of a gallery, and usually contain information about one specific piece in your portfolio. Galleries are a collection Pages and Lightroom Albums, and Links provide a way to link to other sites.

Figure 2

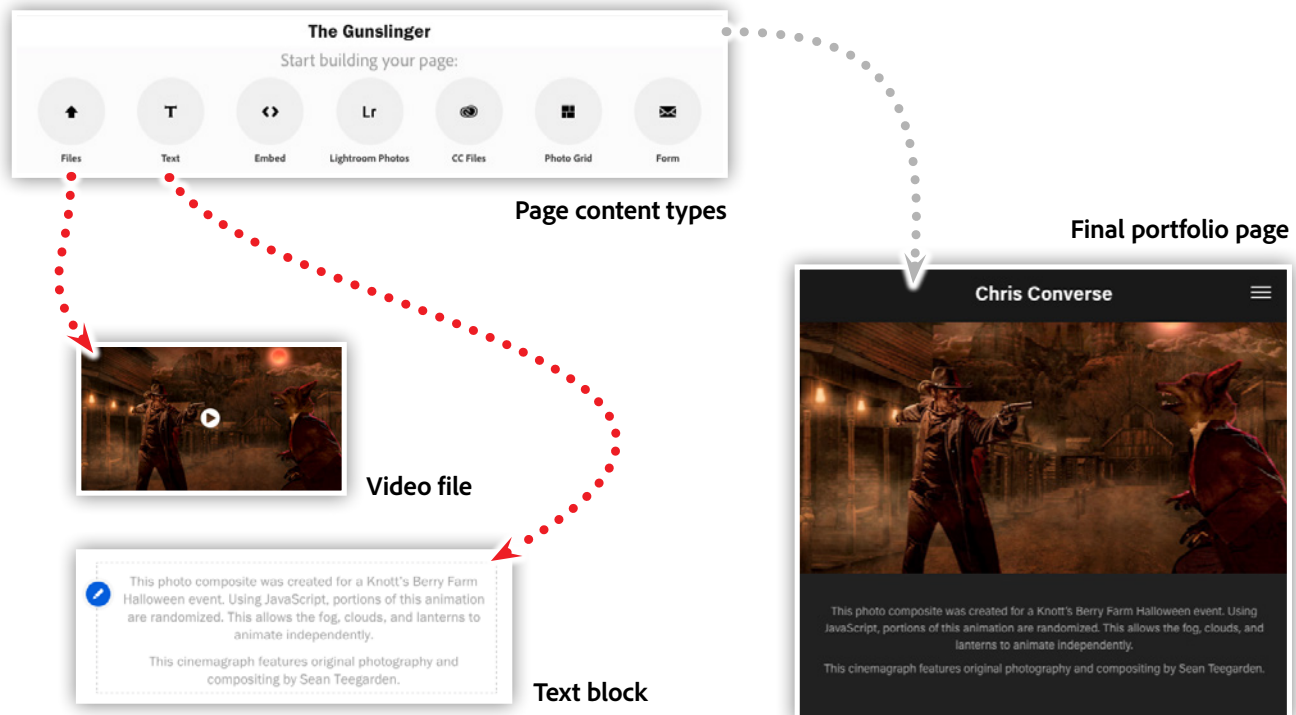


To begin, click the plus sign (+) in the left side tool bar, then choose Gallery. Name your new gallery then click Create Gallery. This puts a new empty gallery in your portfolio site. The Manage Content panel will open displaying your empty gallery. Click the Plus Button again to add content, and this time create a page. Name your new page and choose a Gallery from the destination drop down menu, then click Create Page.

Adding content to a page.

Once you've created a page, it's time to add your content. I'll begin by uploading a video file using the Upload Files button. Then I'll locate the .mp4 file on my local hard drive, and then click Choose.

Figure 3



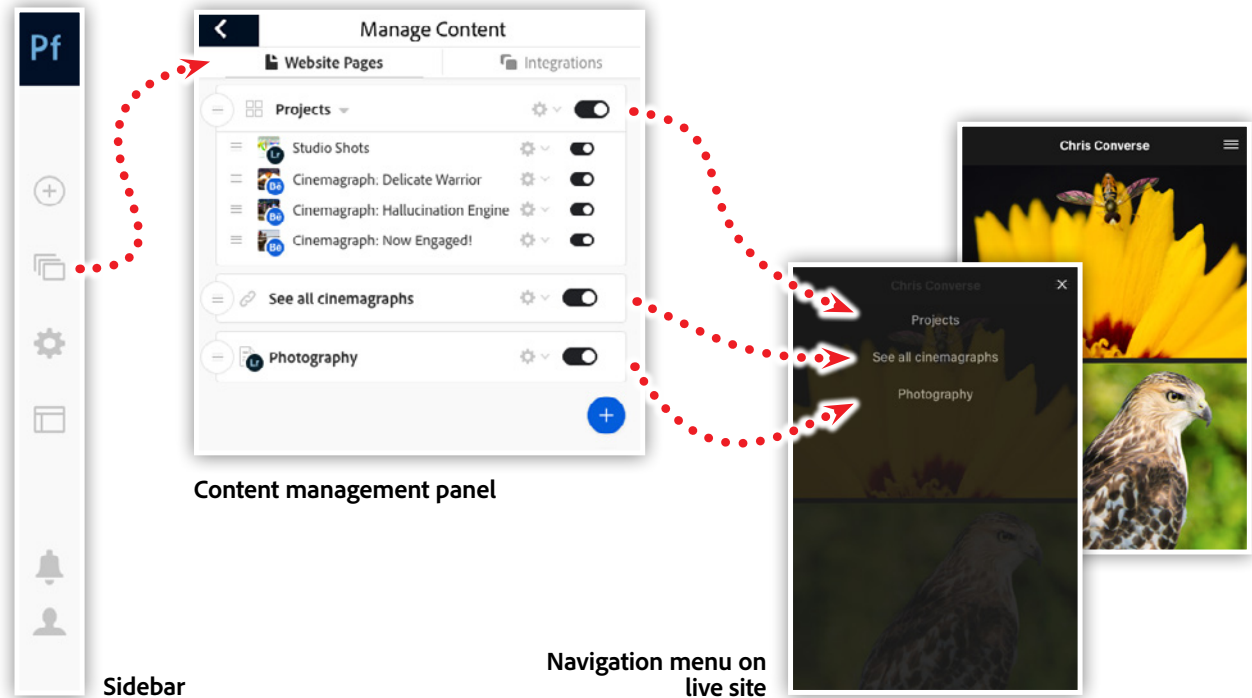
Next, I'll add a text block so I can explain how the animation effect was created, along with credit to the photographer who composited the original image.

The heads-up display (HUD) panel, which floats over your page as you edit the content, gives you quick access to content and settings for both the current page, as well as site wide settings content.

Managing your content and navigation.

The Manage Content button in the left sidebar gives you an overview of the content in your portfolio site. All galleries, pages, albums, and links show in this panel and are graphically represented based on their hierarchy.

Figure 4



The best part about this panel is that you can visually rearrange your content by simply dragging and dropping elements to new positions. Add or remove pages from one gallery to another by dragging them around or rearrange the order of entire galleries.

The navigation for your site is also determined by the structure of the Manage Content panel. Any item that appears in the left-most position is treated as top-level items in the navigation. Pages and albums can also be positioned as top-level items, giving you more flexibility for structuring your navigation.

Connecting Lightroom and Bēhance to your Adobe Portfolio.

Why create your content twice? Connect the projects and albums you've already created with Adobe Portfolio. Update your portfolio even faster by integrating your photography albums and community pages directly into your portfolio site.

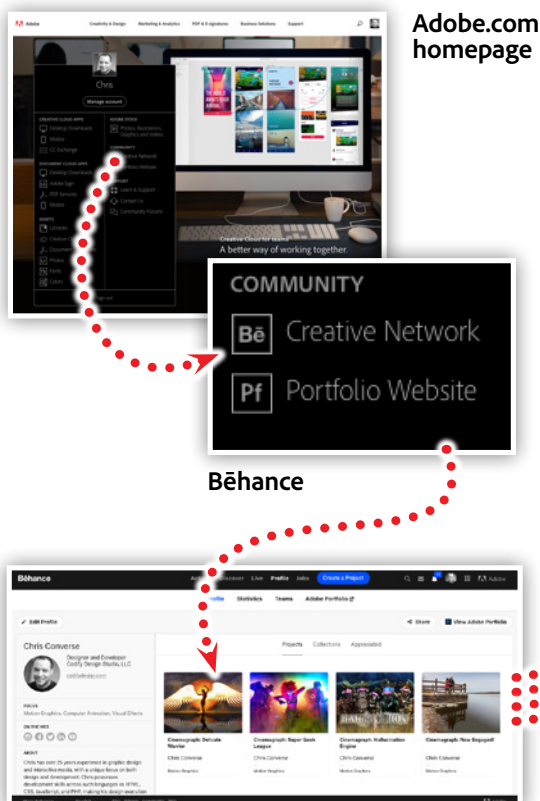
Use Bēhance projects as pages in your portfolio.

Bēhance is a community site that showcases creative work. This active community has been around for quite some time and allows designers, illustrators, photographers, videographers, and animators to share, comment, and appreciate creative projects.

Adobe Portfolio is a new service that lets designers curate their best work into a portfolio. So, if you already have some projects you've posted on Bēhance, you can include them in your Adobe Portfolio instead of double-posting them.

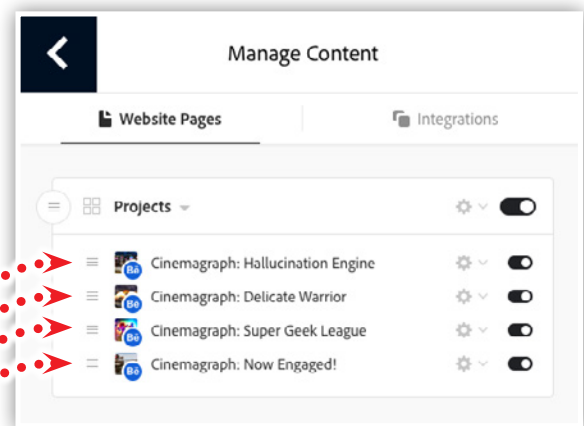
When creating your Adobe Portfolio, you'll be prompted to include your Bēhance pages as part of your portfolio. This feature allows you to continue sharing your work on the creative network while leveraging that same content in your portfolio.

Figure 5



Bēhance

Live projects listed on Bēhance



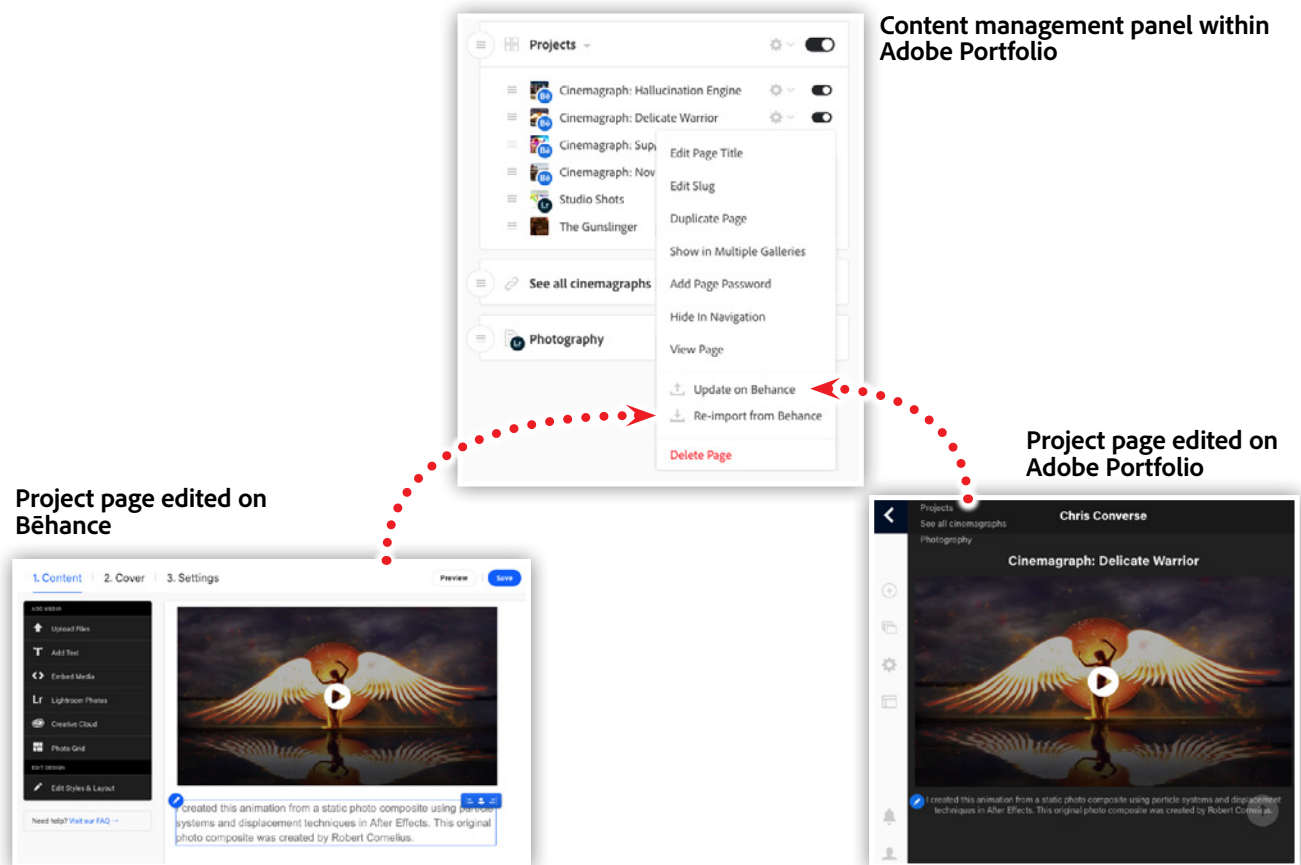
Content management panel within Adobe Portfolio

When logged into Adobe.com, visit Adobe Portfolio and begin editing your portfolio. If you haven't begun creating your portfolio, be sure to see on [Getting started with Adobe Portfolio](#).

Visit the Manage Content panel on the left sidebar and you'll see a gallery named Projects that includes pages generated from your Behance projects. The small "Bē" icon on the page thumbnail signifies that the content is linked to your Behance profile.

When you want to update a Behance page, you have the choice to make updates on Behance or in Adobe Portfolio. If you make changes within Behance, open the Manage Content panel in your portfolio, click the gear icon on the corresponding page, and choose Re-import from Behance. This will synchronize the content from Behance to your Adobe Portfolio.

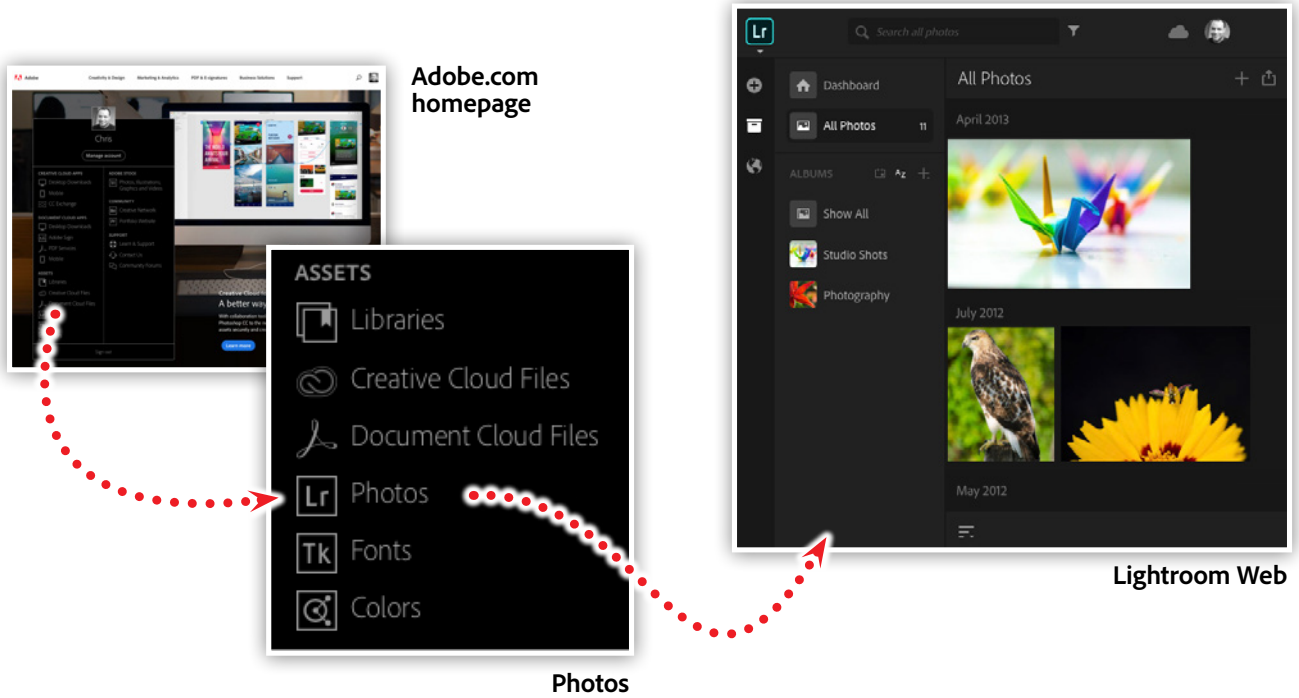
Figure 6



Similarly, if you update a Behance page within Adobe Portfolio, you can push those changes directly back to Behance. In the Manage Content panel within your portfolio, click on the gear icon for the Behance page, and choose Update on Behance. This will synchronize the content from Adobe Portfolio to your Behance project.

Manage photos with Lightroom, share them with Portfolio. While managing content in Adobe Portfolio is a breeze, Lightroom is still better suited for managing your photography library. This is where the Lightroom integration in Portfolio comes in handy.

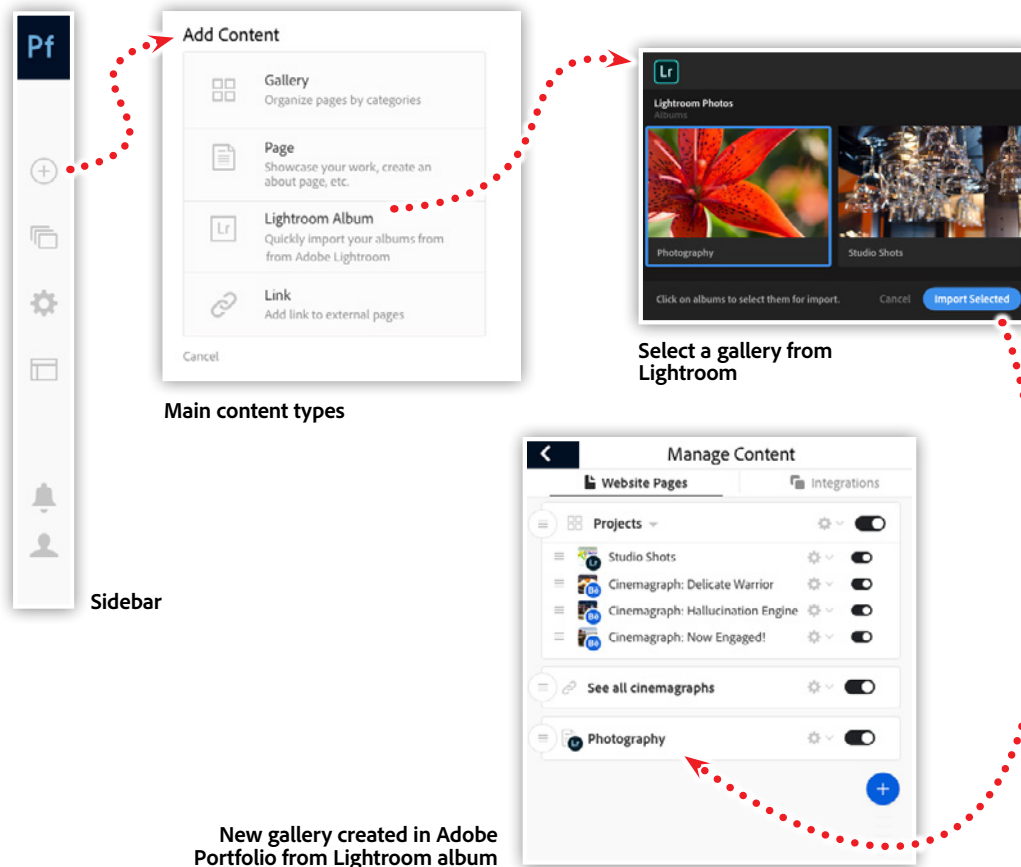
Figure 7



To begin, log into your online Lightroom account (lightroom.adobe.com).

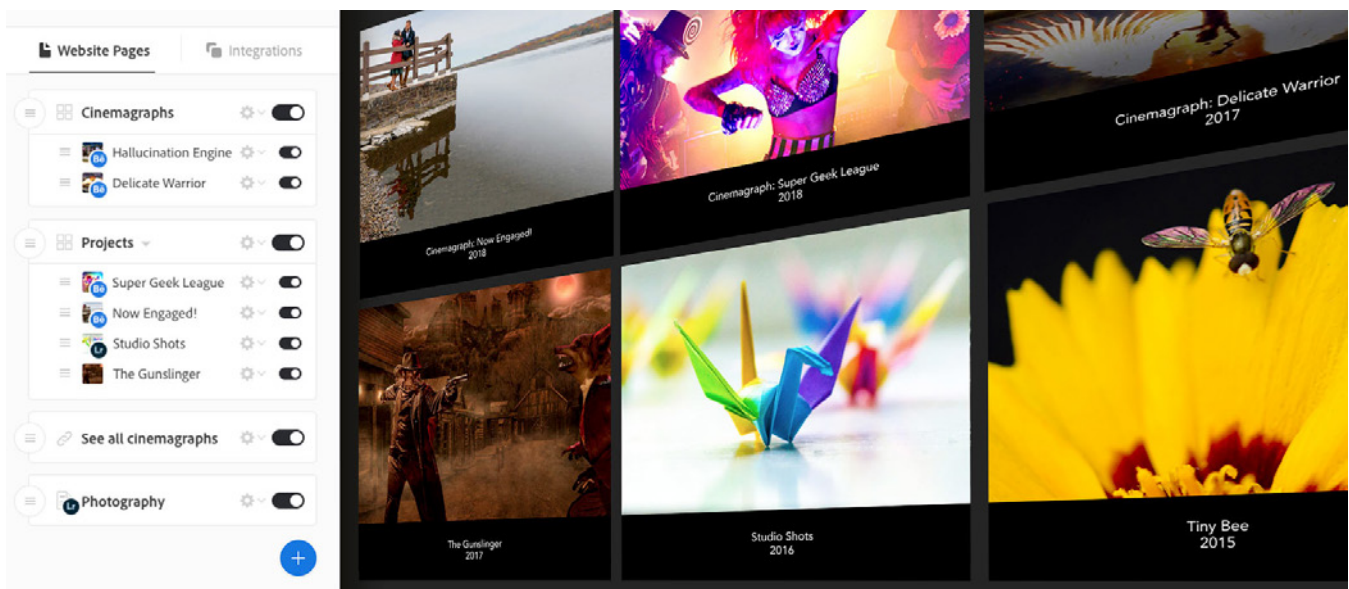
If you have uploaded photos to your Lightroom Web account, then you're ready to create an album. Click the plus (+) sign next to albums in the left sidebar and name your new album. Next, click and drag photos into your new album. Once you have added photos to the album, return to the Adobe Portfolio in order to add the album to your portfolio.

Figure 8



In order to create a gallery based on a Lightroom Album, open the Manage Content panel in Adobe Portfolio and choose Lightroom Album. A new pop-up window will open in your browser displaying all of the Lightroom albums you have created in Lightroom Web. Select an album and click the Import Selected button. Your album will appear as a new gallery in the Manage Content panel within Adobe Portfolio.

In order to make changes to your Lightroom-based gallery, you'll need to go back to Lightroom Web. Once you are back in Lightroom, you can add, edit, or delete images from your album as desired. When your album edits are complete, go back to the Manage Content panel in Adobe Portfolio, then click the gear next to the corresponding gallery and choose Reset from Lightroom. All of the edits you made in Lightroom will be synchronized to your portfolio.



Take a deeper dive into the many features of Adobe Portfolio.



Join Chris Converse in the recorded webinar and learn how to use Adobe Portfolio to show off your best work. Adobe Portfolio lets you upload, organize, and share your work with potential staff and clients all over the world. Your work will be accessible from anywhere on any device.

In this session you'll learn how to do the following:

- Upload your best work—design, motion graphics, photography, and more
- Incorporate great type
- Connect to content from Bēhance
- Add photo albums from Lightroom
- Password protect pages or the entire site
- Change your portfolio theme at any time



Adobe Creative Cloud e-Learning Series

Watch the live recording here:

[Show Your Best Work with Adobe Portfolio](#)



Adobe, the Adobe logo, Creative Cloud, the Creative Cloud logo, Adobe Portfolio, Adobe Lightroom, and Bēhance are either registered trademarks or trademarks of Adobe Systems Incorporated in the United States and/or other countries. All other trademarks are the property of their respective owners.

© 2018 Adobe Systems Incorporated. All rights reserved. 0118