

Show Off your Design Work in the Real World with Adobe Stock and Photoshop

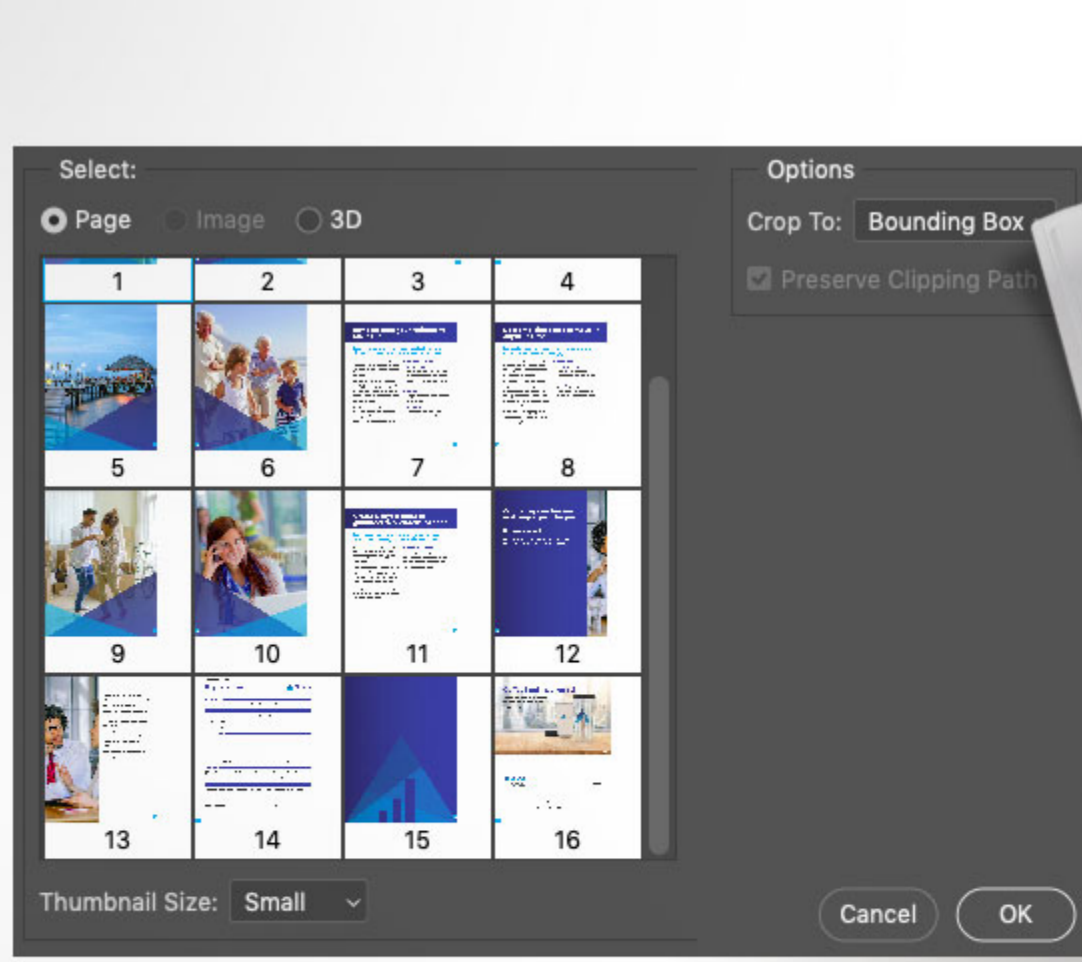


Image source: Adobe Stock / Graphic Burger.



by Chris Converse

POSTED ON 02-06-2020

Adobe Products in this article



To see if your designs will have the right impact in real-life settings, it's a good idea to place them in templates like magazine layouts, bus stop displays, and more. Follow these steps to showcase your work in a realistic-looking [Adobe Stock template](#) using [Adobe Photoshop](#).

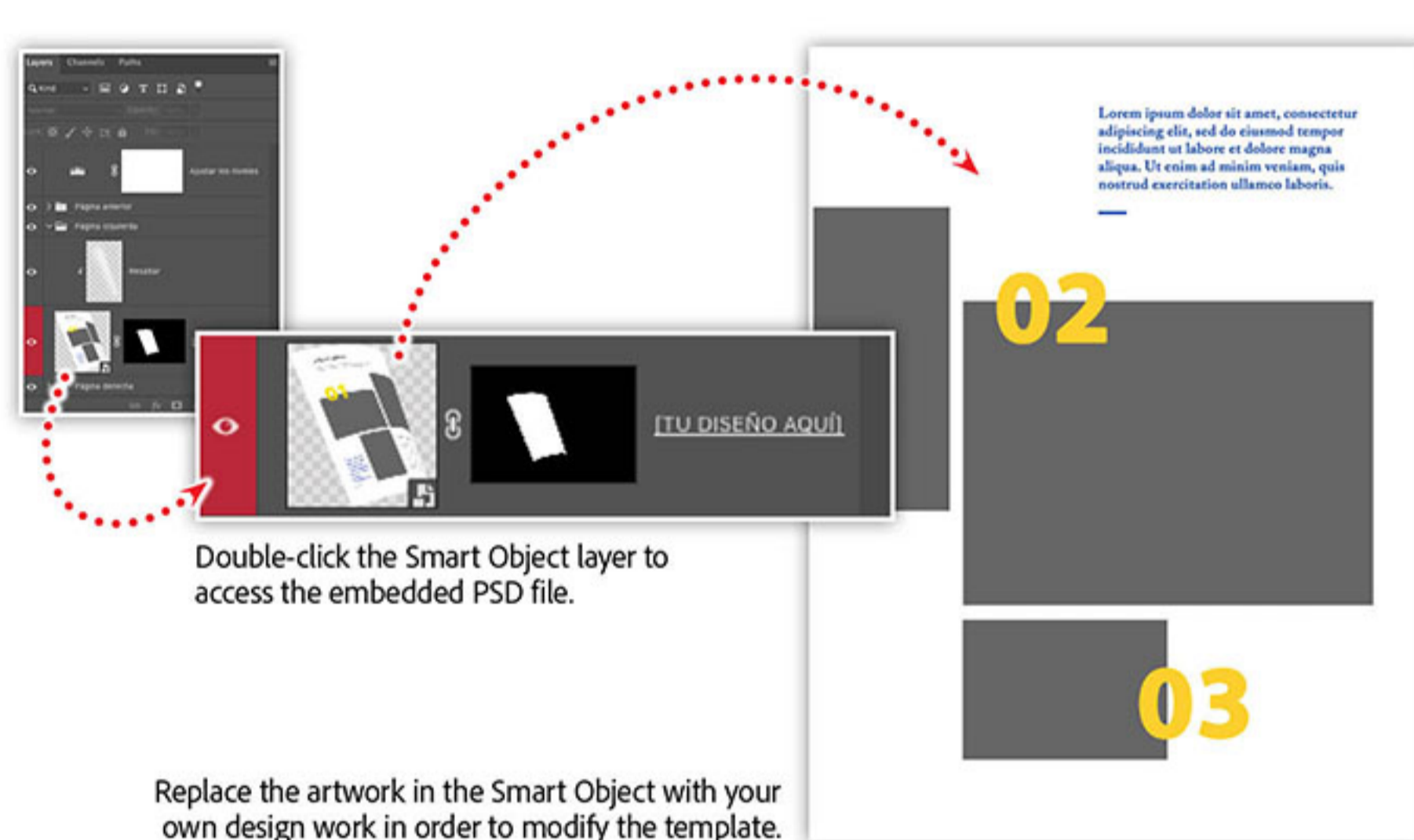
Step 1. Download the Adobe Stock assets

If you'd like to follow along with this tutorial, download the following Preview (watermarked) files from Adobe Stock. You can also watch this tutorial as part of the [Show Off Your Design Work in the Real World](#) webinar.



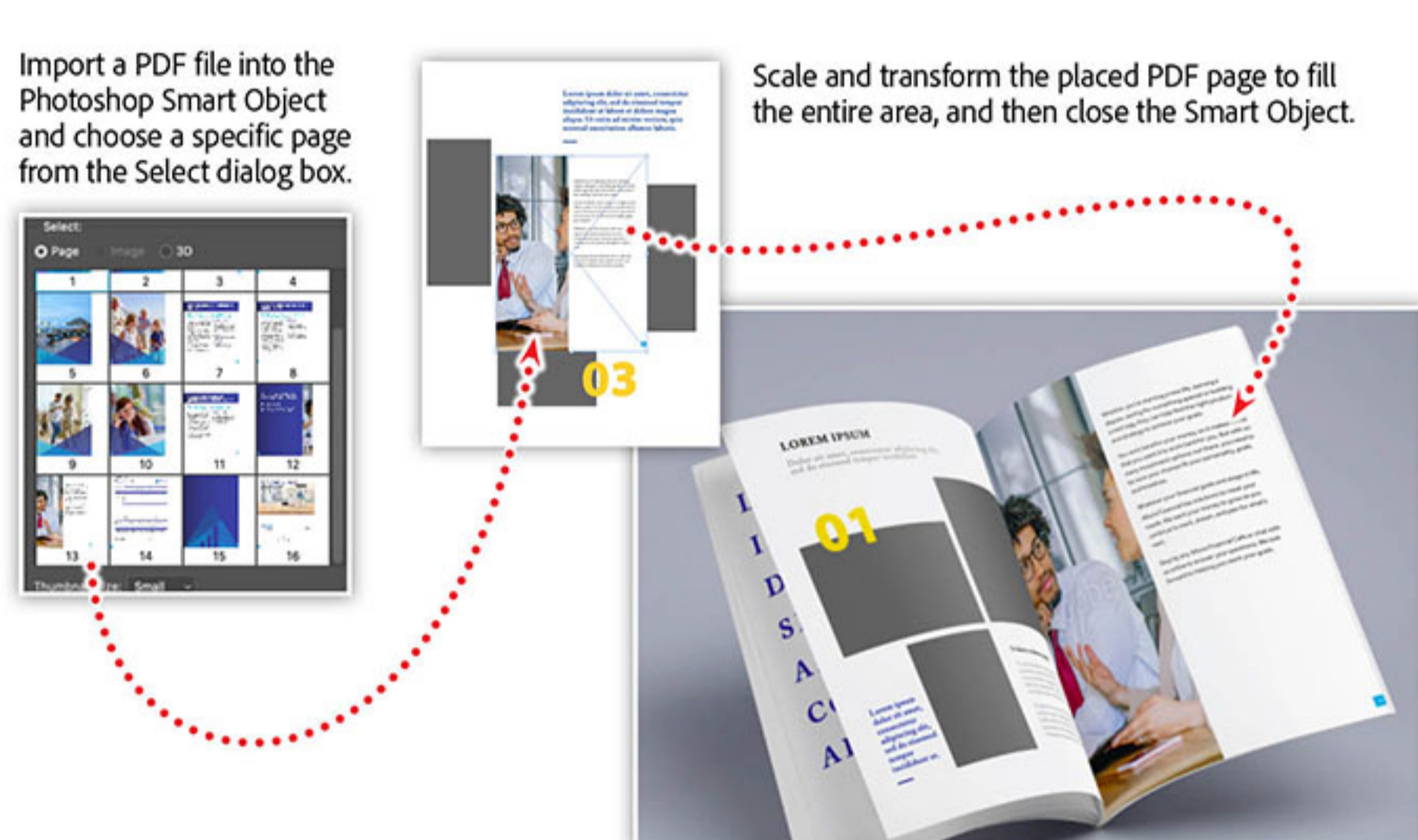
Right template: [Maqueta de revista](#) — by Graphic Burger, left file: [Altura Financial Booklet](#) — by Codify Design Studio.

Step 2. Edit the Embedded Smart Object in the PSD file



This template contains three Smart Objects that are mapped to pages in the magazine image. Open the template in Photoshop, locate the **Layers** panel, and locate the middle layer group named **Página derecha** (i.e., Right page). Then open the Smart Object named **Tu diseño aquí** (i.e., Your design here).

Step 3. Import a PDF page into the Smart Object



With the Smart Object open, choose **Place Linked** in the **File** menu, locate the **Altura Financial Booklet.pdf**, and then click **Place**.

In the **Page Selection** dialog box, choose page 13. Scale the artwork up to match the size of the canvas and position the layer at the top of the **Layers** panel. Then create a new layer under the placed PDF page and fill it with white. Finally, close and save the Smart Object.

Step 4. Import more PDF pages into the template



Open the Smart Object named **Tu diseño aquí** in the bottom layer group named **Página izquierda** (i.e., Left page). Choose **Place Linked** in the **File** menu and choose page 12 in the **Page Selection** dialog box. Position the layer at the top of the **Layers** panel, and then close and save the Smart Object.

Learn more about showing your design work in the real world

Whether you want to see your [poster design](#) on a bus stop display or your animation on a digital billboard, [Adobe Stock](#) has amazing environmental templates to help you realize your vision. You can even make your own templates from Adobe [Stock images](#).

Watch our webinar, [Show Off Your Design Work in the Real World](#), to learn how to:

- Add a poster design to a bus stop marquee
- Add animated graphics to a digital billboard
- Place your advertisement in a sidewalk marquee
- Explore the practical side of creative reality

Adobe Creative Cloud e-learning series: [Show Off Your Design Work in the Real World](#)

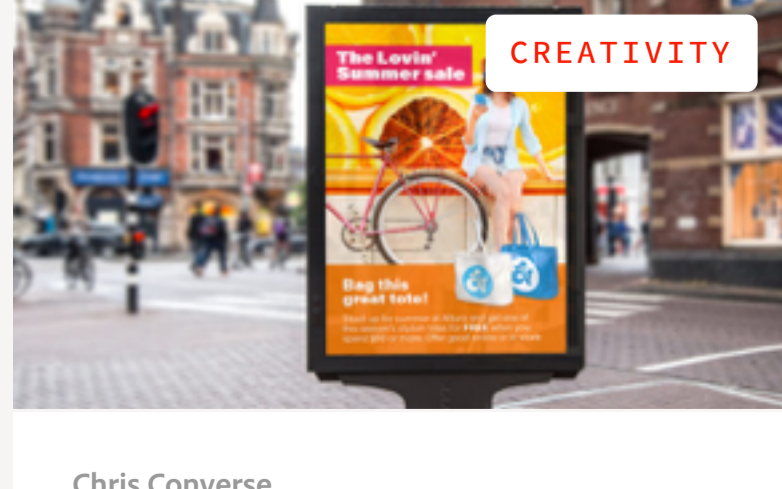
...

Topics in this article

CREATIVITY

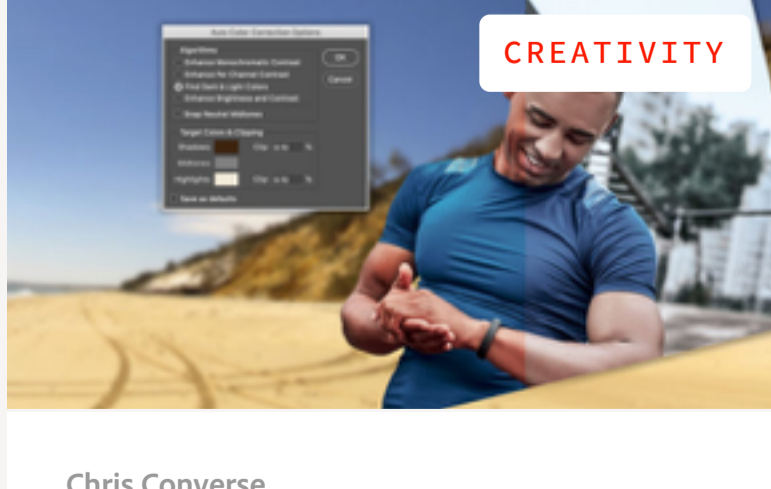


Recommended Articles



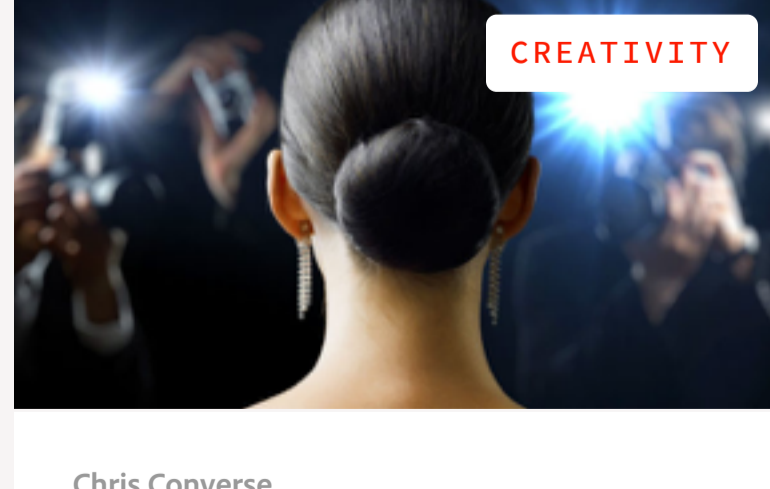
Chris Converse
Visualize Poster Designs in the Real World with Adobe Stock and Photoshop

02-03-2020



Chris Converse
Create Unique Graphics by Combining Adobe Stock Images

01-31-2020



Chris Converse
Add Motion to Still Images with Adobe Stock and Photoshop

01-30-2020

