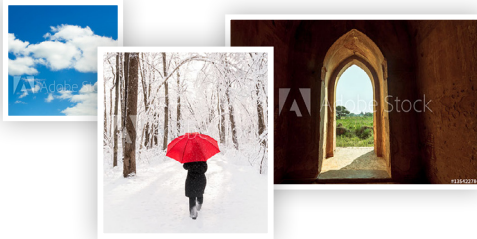


Workshop excerpt taken from the live webinar

# Get to know Photoshop on the iPad

Bring the power of Photoshop to your fingertips. Learn to use one of our your favorite Creative Cloud applications in a whole new way, with a re-engineered touch-based interface.



## 1. Download the following assets

Download the following preview images from Adobe Stock, then save it to your synced Creative Cloud files folder:

Adobe Stock image: [Temple door in Myanmar](#) by mattbkk

Adobe Stock image: [Snowy Winter Walk](#) by Michael Shake

Adobe Stock image: [Clouds in the sky](#) by Za Za studio

## 2. Open images from Creative Cloud

Launch Photoshop on the iPad and tap the **Import and open** link on the splash screen. Choose the Files option from the popup menu and navigate to your Creative Cloud files. Finally, choose the Snowy Winter Walk preview image.

## 3. Import another image into your composition

Bring additional assets into your Photoshop file by tapping on the image icon in the tools panel. Locate the **Temple door in Myanmar** preview image using the same method as Step 2. Once imported:

- Pinch open on the image to scale it up
- Position the top of the door with the top-center of the canvas
- Tap Done in the upper-right of the screen to commit the changes

## 4. Duplicating and Masking a Layer

Tap on the bottom layer (Snow Winter Walk) to select it, then tap the ellipses button and choose Duplicate Layer. Tap-and-hold the duplicated layer and move it to the top of the Layers panel. Then:

- Tap-and-hold the Select tool, and choose Select Subject
- Tap on the Mask option while the subject is selected

## 5. Combining images by painting on a layer mask

Apply a Layer Mask to the **Temple door in Myanmar** layer using the Layer Mask icon. Set the foreground color to Black and then:

- Tap-and-hold the Brush tool to select a **Soft Round** brush
- Set the size to third of the screen and the flow to about 20%
- Select the Layer Mask and paint over the bottom of the door

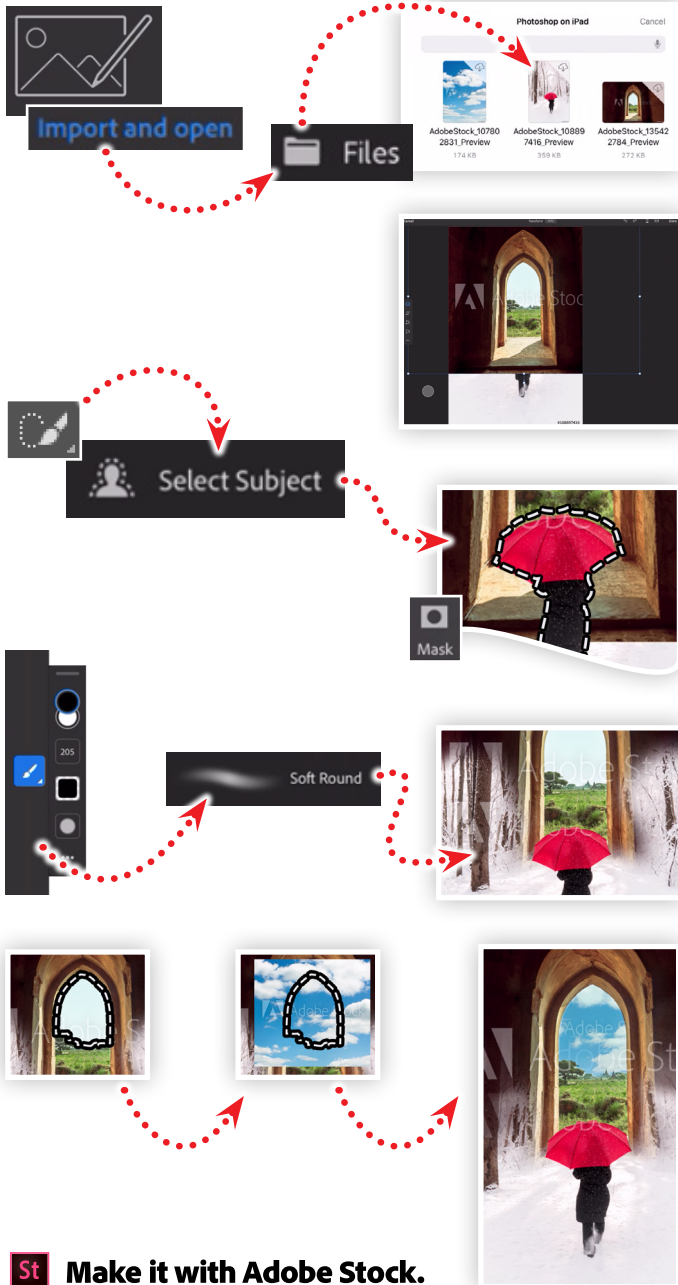
## 6. Add a third image and some color adjustments

Import the **Clouds in the sky** image and position it under the **Temple door in Myanmar**, layer then hide the layer. Then:

- Select the door layer, then use the Quick Select to select the sky
- Show the **Clouds in the sky** and apply a Layer Mask

## Watch the webinar recording

Watch *Get to know Photoshop on the iPad* in its entirety from the [Creative Cloud Events](#) on-demand access page.



**St** Make it with Adobe Stock.